

2008

YOUTH TOBACCO SURVEY

ILLINOIS DEPARTMENT OF PUBLIC HEALTH

ACKNOWLEDGEMENTS

The 2008 Illinois Youth Tobacco Survey was a success due to the collaboration and cooperation among the partners. Primary among these partners are the 3,607 middle school and high school students who contributed their time and provided thoughtful responses to the survey. The teachers and principals in each of the participating schools receive our warmest thanks for accepting the invitation to engage in this process. Their willingness to allow us into the schools enabled us to attain a high response rate, thereby achieving the threshold necessary to yield weighted data. Special thanks also go to the district and regional superintendents who recognize the value of this effort and facilitated the school recruitment process.

Damon T. Arnold, M.D., M.P.H.
Director
Illinois Department of Public Health

Data collection and report publication were supported by Cooperative Agreement Number U58/CCU522815-04 from the U.S. Centers for Disease Control and Prevention (CDC). Its contents are solely the responsibility of the authors and do not necessarily represent the official views of the CDC.

TABLE OF CONTENTS

Executive Summary	iii
Definitions	vi
Introduction	1
Prevalence	2
Access	12
Tobacco Use on School Property	16
Cessation	18
Knowledge and Attitudes	21
Media	27
Secondhand Smoke.....	30
Methodology	33
Detailed Table.....	37

EXECUTIVE SUMMARY

Tobacco use leads to the deaths of more people in the United States than do homicides, suicides, automobile accidents, AIDS, alcohol, drug abuse, and fires combined. Approximately 400,000 deaths (one out of every five) each year in the United States are a result of tobacco use. In addition to these mortality figures, the national economic burden of tobacco use is more than \$50 billion in direct medical costs.¹

The earlier tobacco use begins, the more likely it will develop into an addictive lifestyle pattern. Approximately 80 percent of adults who smoke began smoking before the age of 18. It is currently estimated that every day nearly 3,000 people younger than the age of 18 become regular smokers.¹ Among Illinois' youth, approximately one in 10 middle school students and one in four high school students currently use some form of tobacco product.

The Illinois Youth Tobacco Survey (IYTS) was conducted during 2002, 2005, 2006 and 2008 by the Illinois Department of Public Health. The IYTS provided Illinois with a comprehensive look at youth tobacco use in the state through assessment of tobacco-related knowledge, attitudes, and behaviors among middle and high school students. Such an assessment of youth tobacco use and knowledge is critical to improving the state's tobacco prevention and cessation activities. Ongoing surveillance through the IYTS enables the Department to monitor tobacco-related issues in the future.

This report presents the findings from the 2008 IYTS. The following are highlights from each section within this report.

Tobacco Use

Eleven percent of middle school students and 27.5 percent of high school students currently use tobacco products.

Cigars are the most commonly used tobacco product among middle school students (5.9%), whereas cigarettes are the most commonly used tobacco product among high school students (18.8%).

Between middle school and high school, there are significant increases in the rates of tobacco use among male (13.4% and 32.3%, respectively), female (8.6% and 22.5%, respectively), white (7.0% and 29.5%, respectively), and Hispanic students (17.6% and 30.1%, respectively).

Between middle school and high school, there are significant increases in the rates of current cigarette smoking among male (5.2% and 20.3%, respectively), female (4.2% and 17.3%, respectively), white (3.3% and 20.8%, respectively), and Hispanic students (7.6% and 20.8%, respectively).

At both the middle school and high school level, Marlboro® cigarettes are the brand of choice (36.0% and 37.4%, respectively).

High school students (8.2%) are approximately four times more likely to report having smoked cigarettes on school property in the past 30 days than are middle school students (2.0%).

Between sixth (4.3%) and 12th grade (17.2%), there is a four-fold increase in the rate of cigar smoking.

¹ U.S. Centers for Disease Control and Prevention. *Tobacco Information and Prevention Source (TIPS)*. <http://www.cdc.gov/tobacco/issue.htm>

Smokeless tobacco products are used by 2.1 percent of middle school students and 8.1 percent of high school students.

Access

More than one-half of middle school and high school students who currently smoke obtain their cigarettes from social sources, rather than buying them directly from a store or vendor.

More than one-half of high school students (56.3%) who currently smoke report they were not asked to show proof of age when buying cigarettes in a store.

Approximately two-thirds of middle school (63.7%) and high school students (67.8%) who currently smoke report they were not refused purchase of cigarettes because of their age.

Cessation

Approximately one-half of middle school (46.5%) and high school students (51.2%) who currently smoke cigarettes want to quit.

Among students who currently smoke, 84.8 percent in middle school and 76.2 percent in high school are confident in their ability to quit smoking cigarettes.

More than one-half of middle school (58.1%) and high school students (57.6%) who currently smoke have tried to quit smoking in the past 12 months.

During their last quit attempt, more than one-half of middle school (57.2%) and high school students (69.5%) who currently smoke were unable to quit cigarettes for 30 days or more.

Knowledge and Attitudes

In both middle school (28.1%) and high school (22.9%), approximately one in four students who currently smoke think it is safe to smoke for a year or two.

Approximately one in five middle school (19.8%) and high school students (19.1%) believe that light (low-tar) cigarettes have less risk than regular (full-flavor) cigarettes.

In both middle school and high school, current smokers (41.4% and 32.7%, respectively) are significantly more likely than never smokers (16.0% and 14.8%, respectively) to believe that smokers have more friends.

In both middle school and high school, current smokers (28.8% and 30.6%, respectively) are significantly more likely than never smokers (9.7% and 8.4%, respectively) to believe that smoking cigarettes makes young people look cool or fit in.

In both middle school and high school, students who have never smoked (77.6% and 70.4%, respectively) are significantly more likely than those who currently smoke cigarettes (29.0% and 27.0%, respectively) to think that their friends would be upset if the smoked cigarettes.

In both middle school and high school, there is no significant difference between students who currently smoke (55.3% and 66.7%, respectively) and those who have never smoked (69.5% and 61.0%, respectively) in the percentage who have discussed the dangers of tobacco use with their parents in the past 12 months.

Regardless of their smoking status, more than one-third of middle school (39.7%) and high school students (38.8%) have been advised by their doctor or dentist not to smoke in the past 12 months.

Less than one-half of middle school (48.2%) and high school students (42.0%) report they were taught about the dangers of tobacco use during the current school year.

Media

More than one-half of middle school students (59.6%) and three-fourths of high school students (74.9%) have been exposed to anti-tobacco advertisements in the past 30 days.

Overall, approximately four out of 10 middle school (40.7%) and high school students (38.6%) who use the Internet have seen advertisements for tobacco products on the Internet.

In middle school, black students (47.0%) are significantly more likely than white students (36.5%) to report seeing tobacco advertisements on the Internet. In high school, however, there are no significant differences among white (37.8%), black (39.7%), and Hispanic students (40.3%) in their exposure to tobacco advertisements on the Internet.

Illinois middle school students who currently use tobacco (30.5%) are significantly less likely than middle school tobacco users nationally (45.7%) to have bought or received an item with a tobacco company name or picture on it in the past 12 months. At the high school level, Illinois students who currently use tobacco (45.8%) are significantly more likely than high school tobacco users nationally (34.6%) to have bought or received an item with a tobacco company name or picture on it in the past 12 months.

Regardless of smoking status, over 90 percent of middle school and high school students have seen advertisements for tobacco products or tobacco logos in gas stations or convenience stores.

Secondhand Smoke

In both middle school and high school, approximately nine out of 10 students believe secondhand smoke is harmful to them.

In middle school, white students (93.4%) are significantly more likely than black (83.9%) or Hispanic students (85.2%) to believe that secondhand smoke is harmful. At the high school level, white students (93.3%) are significantly more likely than Hispanic students (85.9%) to believe that secondhand smoke is harmful.

Overall, 42.4 percent of middle school students and 39.5 percent of high school students live with someone who smokes cigarettes.

In middle school and high school, current smokers (76.7% and 77.5%, respectively) are significantly more likely than never smokers (27.9% and 21.3%, respectively) to have recently been exposed to secondhand smoke in a car.

DEFINITIONS

Comparable: Two estimates are considered comparable if the difference between the two is neither statistically nor practically significant.

Confidence Interval: The confidence interval around a specific statistic (in this case, the percentage) represents the range of values within which the “true population” can be expected to be located, with 95 percent certainty, at a .05 level of precision. The width of the confidence interval depends on the sample size, the variation of data values, and other factors. The calculation of confidence intervals is based on the assumption that the variable is normally distributed in the population. For example, if a given percentage is 17.2 percent and the confidence interval is ± 6.9 , it is 95 percent certain that the true population percentage will fall between 10.3 percent and 24.1 percent. Overall, the narrower (or tighter) the confidence interval, the greater the certainty that the statistic represents the true population.

Current Smoker: Students were considered to be current smokers if they reported smoking cigarettes at least once within the past 30 days.

Frequent Smoker: Students were considered to be frequent cigarette smokers if they reported smoking cigarettes on 20 or more of the past 30 days.

NOTE: *The proportion of frequent smokers is not mutually exclusive from the proportion of current smokers; rather, it is a subset of students who have used cigarettes within the past 30 days on 20 or more of those days.*

Never Smoker: Students were considered to have never smoked if they have never tried cigarette smoking, even one or two puffs.

Statistically Significant: Statistical significance refers to the assurance that the differences between two estimates can be regarded as representing the “true population” with a definable level of certainty that the differences were not the result of chance. Typically, statistical significance is stated in terms of the 95 percent certainty, at a .05 level of precision. Throughout the report, when data are said to be significantly different, there is no overlap in the confidence intervals of the percentages being compared.

INTRODUCTION

Tobacco use is the leading preventable cause of disease, disability and death in Illinois and affects the everyday lives of smokers and non-smokers throughout the state. During 1997-2001, on average, 16 percent of all deaths per year in Illinois were attributable to smoking. This means an average of 16,939 Illinois residents died each year from smoking-attributable causes, including cancer, heart disease and respiratory diseases.

Tobacco use carries a huge economic burden. During 2001, cigarette smoking is estimated to have cost Illinois \$4.2 billion in costs due to lost productivity. During 2001, Illinois' estimated Medicaid expenditures for smoking-related causes totaled nearly \$1.4 billion. Illinois' share of the smoking-related Medicaid costs was approximately half, or almost \$690 million.

According to results contained in this 2008 IYTS report, 27.5 percent of the state's high school students and 11.3 percent of middle school students used some form of tobacco in the past 30 days. When tobacco use is initiated at a young age the more likely the individual is to continue using tobacco throughout his or her lifetime. This habit brings with it the increased risk for tobacco-related disease, disability and death. It is estimated that one out of every three smokers will die from tobacco-related diseases.

As the state's lead tobacco prevention and control agency, the Illinois Department of Public Health administers the Illinois Tobacco-Free Communities (ITFC) program. This comprehensive program, funded primarily through the Master Settlement Agreement, focuses on four goals: prevent initiation of tobacco use among young people, eliminate exposure to secondhand smoke, promote cessation among adults and youth, and identify and eliminate tobacco-related disparities among specific population groups.

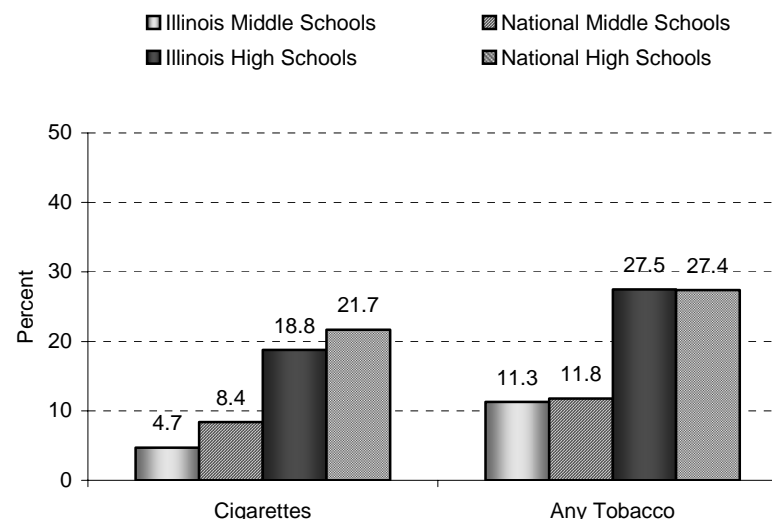
The 2008 IYTS provides Illinois with a comprehensive look at youth tobacco use in the state and an assessment of tobacco-related knowledge, attitudes and behaviors among middle school and high school students. The Youth Tobacco Surveillance and Evaluation system, which includes international, national and state school-based surveys of middle school and high school students, was developed by the U.S. Centers for Disease Control and Prevention. It was created to assist states in developing and maintaining comprehensive tobacco prevention and control programs. The IYTS, administered previously in spring 2002, 2005 and 2006, provides assessment of youth tobacco use and knowledge that is critical to improving the state's tobacco prevention and cessation activities. This report summarizes data from the 2008 IYTS that was administered during the fall of the 2007/2008 school year.

Illinois Youth and National Youth

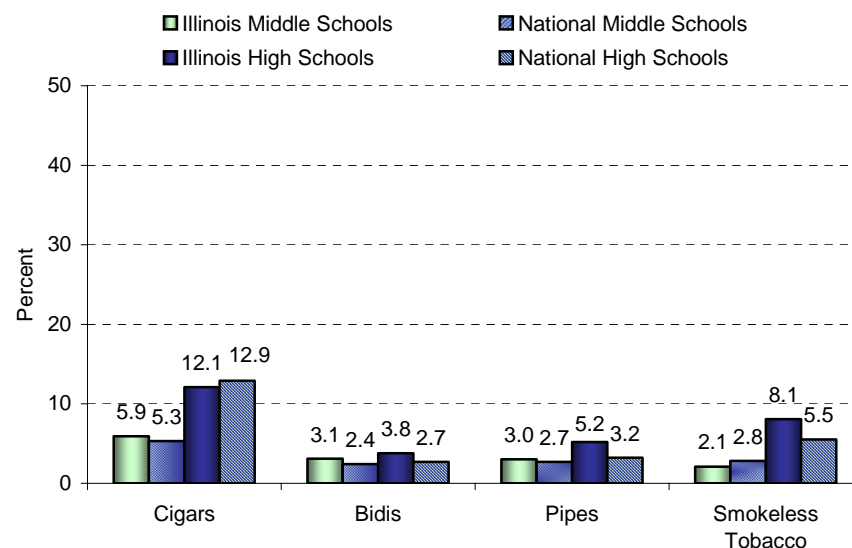
To compare the prevalence of tobacco use among Illinois youth to that of youth across the United States, tobacco use data from the 2008 Illinois Youth Tobacco Survey has been compared to data from the 2004 National Youth Tobacco Survey.²

- Illinois middle school students (4.7%) are significantly less likely than middle school students nationwide to currently smoke cigarettes (8.4%).
- The rate of current cigarette use among Illinois high school students (18.8%) is comparable to the national average (21.7%).
- 11.3 percent of Illinois middle school students and 27.5 percent of Illinois high school students currently use one or more forms of tobacco, rates which are comparable to the national averages (11.8% and 27.4%, respectively).
- Illinois middle school and high school students' rates of cigar, pipe, bidi, and smokeless tobacco use are not significantly different from the national middle school and high school rates of the same products.

Percent of Illinois and U.S. students who have used cigarettes or any form of tobacco at least once in the past 30 days by SCHOOL TYPE



Percent of Illinois and U.S. students who have smoked cigars, bidis, or pipes or used smokeless tobacco at least once in the past 30 days by SCHOOL TYPE



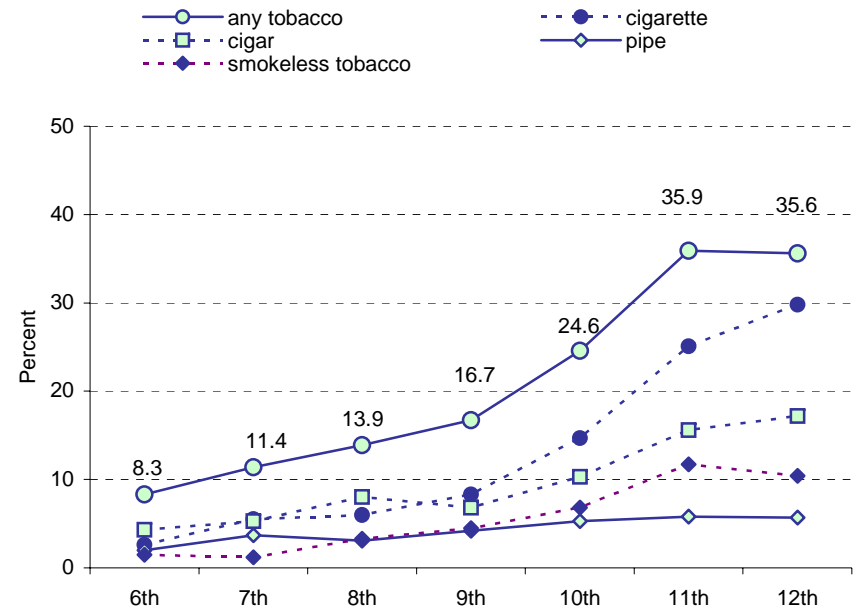
² National Youth Tobacco Survey data are from: U.S. Centers for Disease Control and Prevention, <http://www.cdc.gov/tobacco/NYTS/nyts2004.htm>.

Use of Tobacco Products

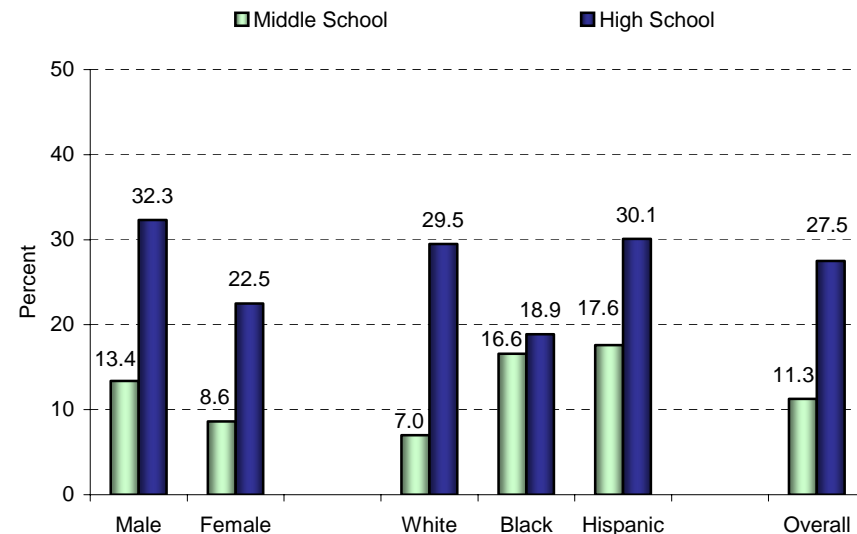
Students were asked about their use of different forms of tobacco including cigarettes, cigars, bidis, pipes, and smokeless tobacco during the past 30 days. Students were considered to be current tobacco users if they reported using any of these products at least once within the past 30 days.

- 11.3 percent of middle school students and 27.5 percent of high school students in Illinois currently use one or more tobacco products.
- As grade increases, so does the overall rate of current tobacco use, with more than a four-fold increase between sixth (8.3%) and 12th grade (35.6%). There is a significant increase in tobacco use between grades 10 (24.6%) and 11 (35.9%).
- In both middle school and high school, there is no significant difference between males (13.4% and 32.3%, respectively) and females (8.6% and 22.5%, respectively) in the rates at which they use tobacco products.
- In middle school, black (16.6%) and Hispanic students (17.6%) are significantly more likely than white students (7.0%) to be current tobacco users. In high school, however, there are no significant differences in the rates of tobacco use among white (29.5%), black (18.9%), and Hispanic students (30.1%).
- Between middle school and high school, there are significant increases in the rates of tobacco use among male (13.4% and 32.3%, respectively) and female students (8.6% and 22.5%, respectively).
- Between middle school and high school, there are significant increases in the rates of tobacco use among white (7.0% and 29.5%, respectively) and Hispanic students (17.6% and 30.1%, respectively).

Percent of students who used tobacco at least once in the past 30 days by SCHOOL GRADE and PRODUCT TYPE



Percent of students who used tobacco at least once in the past 30 days by GENDER, RACE/ETHNICITY, and SCHOOL TYPE



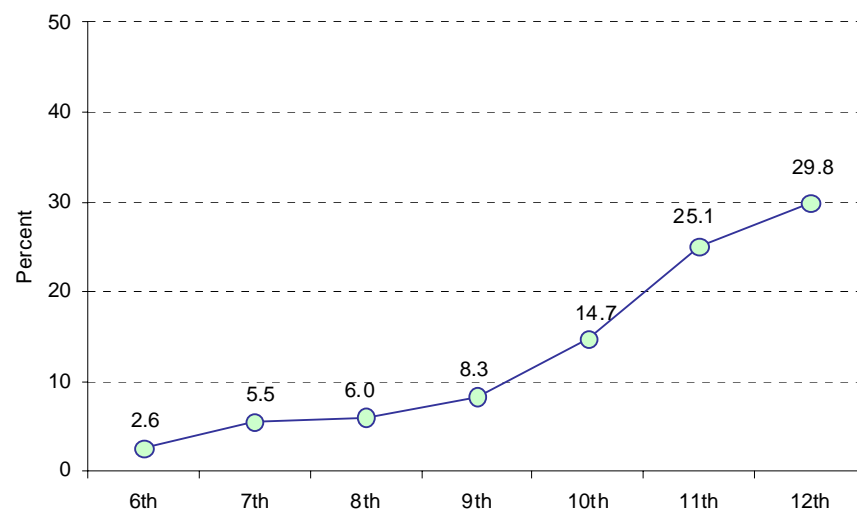
Cigarette Smoking

“During the past 30 days, on how many days did you smoke cigarettes?”

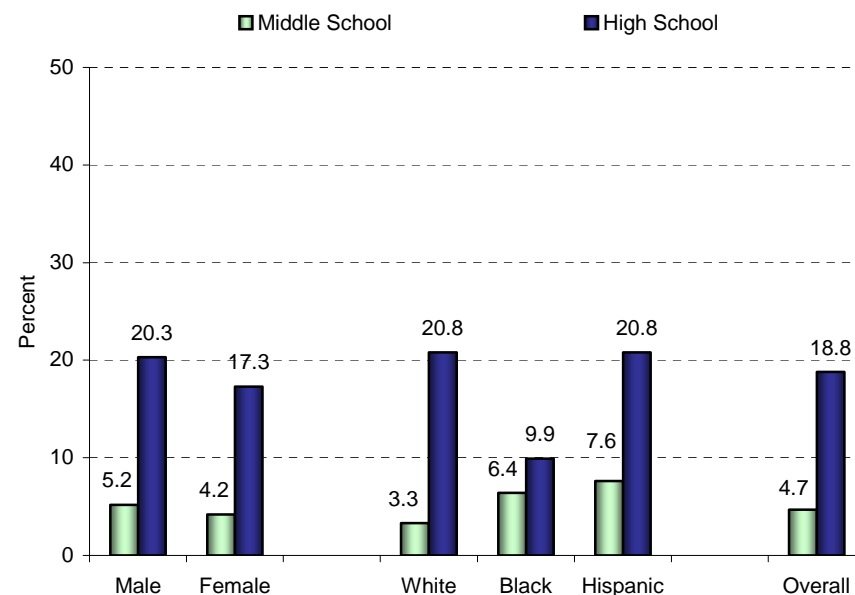
Students were asked about their use of cigarettes during the past 30 days. Students were considered to be current cigarette smokers if they reported smoking cigarettes at least once within the past 30 days.

- 4.7 percent of middle school students and 18.8 percent of high school students in Illinois currently smoke cigarettes.
- As grade increases, so does the rate of cigarette smoking, with more than a 10-fold increase between grades six (2.6%) and 12 (29.8%). There is a significant increase in cigarette smoking between grades 10 (14.7%) and 11 (25.1%).
- In both middle school and high school, there is no significant difference between male (5.2% and 20.3%, respectively) and female students (4.2% and 17.3%, respectively) with respect to their rates of cigarette smoking.
- At the middle school level, there are no significant differences among white (3.3%), black (6.4%), and Hispanic students (7.6%) with respect to their rates of cigarette smoking. At the high school level, however, white students (20.8%) are significantly more likely than black students (9.9%) to be current cigarette users.
- Between middle school and high school, there are significant increases in the rates of current cigarette smoking among male (5.2% and 20.3%, respectively) and female students (4.2% and 17.3%, respectively).
- Between middle school and high school, there are significant increases in current cigarette smoking among white (3.3% and 20.8%, respectively) and Hispanic students (7.6% and 20.8%, respectively).

Percent of students who smoked a cigarette at least once in the past 30 days by SCHOOL GRADE



Percent of students who smoked a cigarette at least once in the past 30 days by GENDER, RACE/ETHNICITY, and SCHOOL TYPE



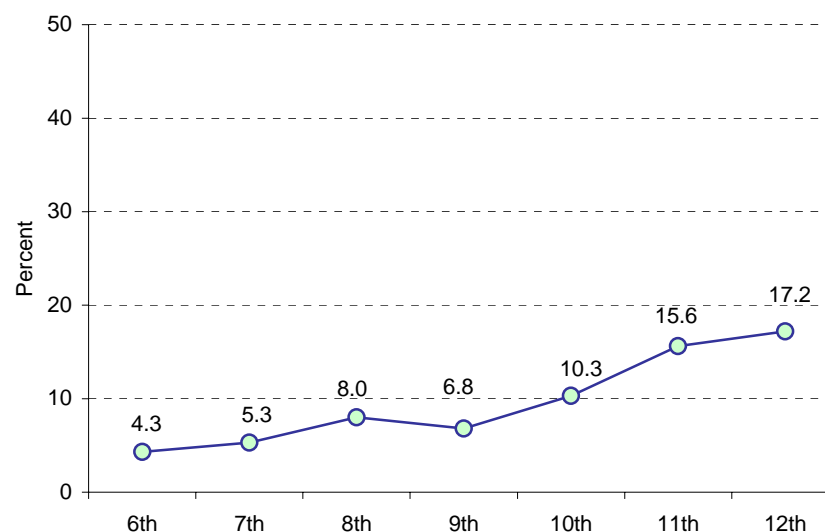
Cigar Smoking

“During the past 30 days, on how many days did you smoke cigars, cigarillos, or little cigars?”

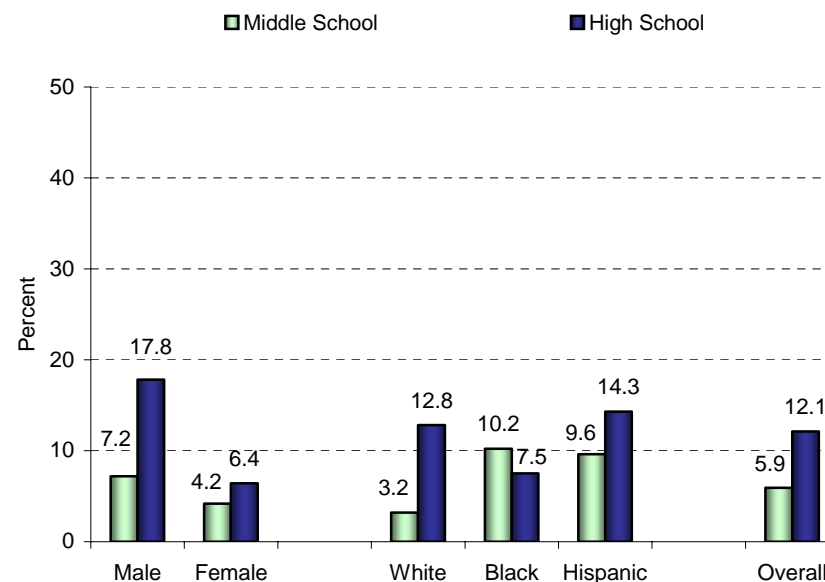
Students were asked about their use of cigars, cigarillos, or little cigars during the past 30 days. Students were considered to be current cigar smokers if they had reported smoking a cigar at least once within the past 30 days.

- 5.9 percent of middle school students and 12.1 percent of high school students in Illinois currently smoke cigars.
- Between sixth (4.3%) and 12th grade (17.2%), there is a four-fold increase in the rate of cigar smoking.
- At the middle school level, there is no significant difference between male (7.2%) and female students (4.2%) in their rates of cigar smoking. At the high school level, however, rates of cigar smoking are significantly higher among male students (17.8%) than female students (6.4%).
- At the middle school level, black (10.2%) and Hispanic students (9.6%) are significantly more likely than white students (3.2%) to be current cigar smokers. At the high school level, however, there are no significant differences among white (12.8%), black (7.5%), and Hispanic (14.3%) students in their rates of cigar smoking.
- Between middle school and high school, there is a significant increase in the rate of cigar smoking among male students (7.2% and 17.8%, respectively), but there is no significant change among female students (4.2% and 6.4%, respectively).
- Between middle school and high school, there is a significant increase in the rate of cigar smoking among white students (3.2% and 12.8%, respectively), but there is no significant change among black (10.2% and 7.5%, respectively) or Hispanic students (9.6% and 14.3%, respectively).

Percent of students who smoked a cigar at least once in the past 30 days by SCHOOL GRADE



Percent of students who smoked a cigar at least once in the past 30 days by GENDER, RACE/ETHNICITY, and SCHOOL TYPE



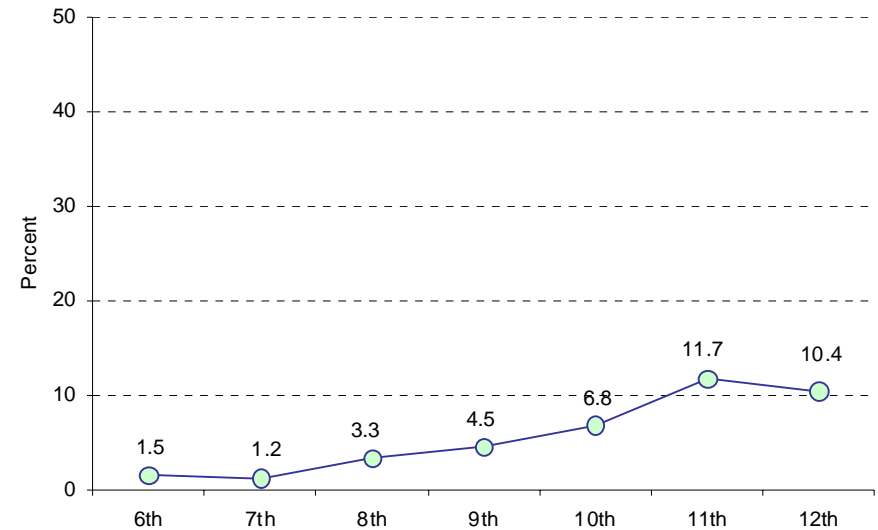
Smokeless Tobacco Use

“During the past 30 days, on how many days did you use chewing tobacco, snuff or dip?”

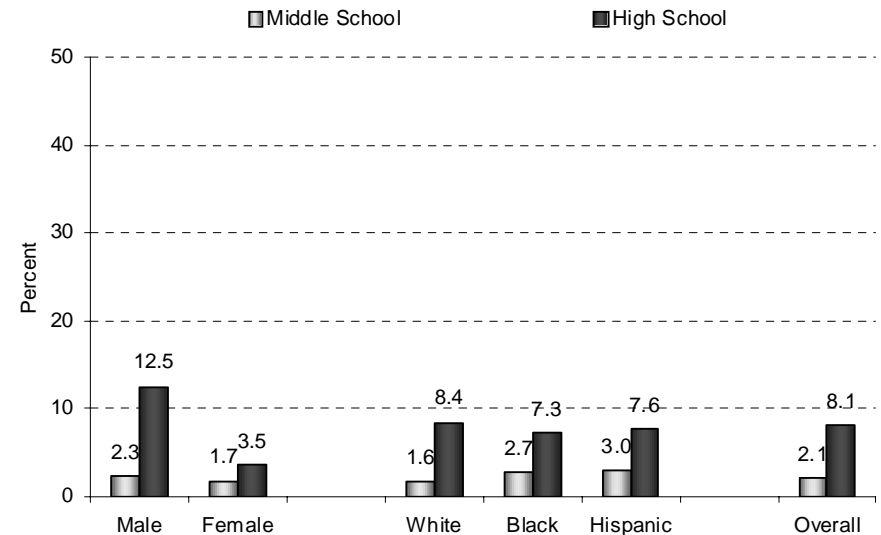
Students were asked about their use of chewing tobacco, snuff or dip (such as Redman®, Levi Garrett®, Beechnut®, Skoal®, Skoal Bandits®, or Copenhagen®) during the past 30 days. Students were considered to be current smokeless tobacco users if they had used smokeless tobacco on at least one of the past 30 days.

- 2.1 percent of middle school students and 8.1 percent of high school students in Illinois currently use smokeless tobacco.
- Between grades six (1.5%) and 12 (10.4%), there is a nearly seven-fold increase in the rates of smokeless tobacco use.
- At the middle school level, there is no significant difference between male (2.3%) and female students (1.7%) in their rates of smokeless tobacco use. At the high school level, however, male students (12.5%) are significantly more likely than female students (3.5%) to currently use smokeless tobacco.
- In both middle school and high school, there are no significant differences among white (1.6% and 8.4%, respectively), black (2.7% and 7.3%, respectively), and Hispanic students (3.0% and 7.6%, respectively) in their rates of smokeless tobacco use.
- Between middle school and high school, there is a significant increase in the rate of smokeless tobacco use among male students (2.3% and 12.5%, respectively), but there is no significant change in smokeless tobacco use among female students (1.7% and 3.5%, respectively).
- Between middle school and high school, there is a significant increase in the rate of smokeless tobacco use among white students (1.6% and 8.4%, respectively), but there is no significant change among black (2.7% and 7.3%, respectively) or Hispanic students (3.0% and 7.6%, respectively).

Percent of students who used smokeless tobacco at least once in the past 30 days by SCHOOL GRADE



Percent of students who used smokeless tobacco at least once in the past 30 days by GENDER, RACE/ETHNICITY, and SCHOOL TYPE



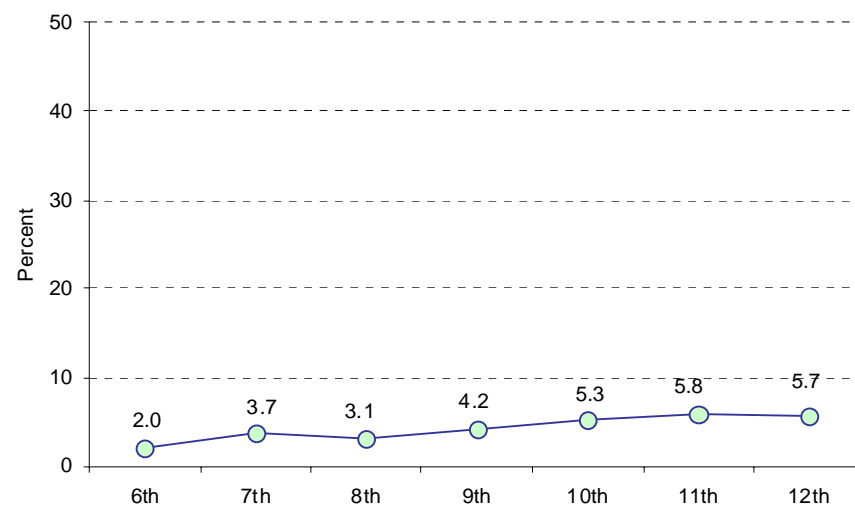
Pipe Smoking

“During the past 30 days, on how many days did you smoke tobacco in a pipe?”

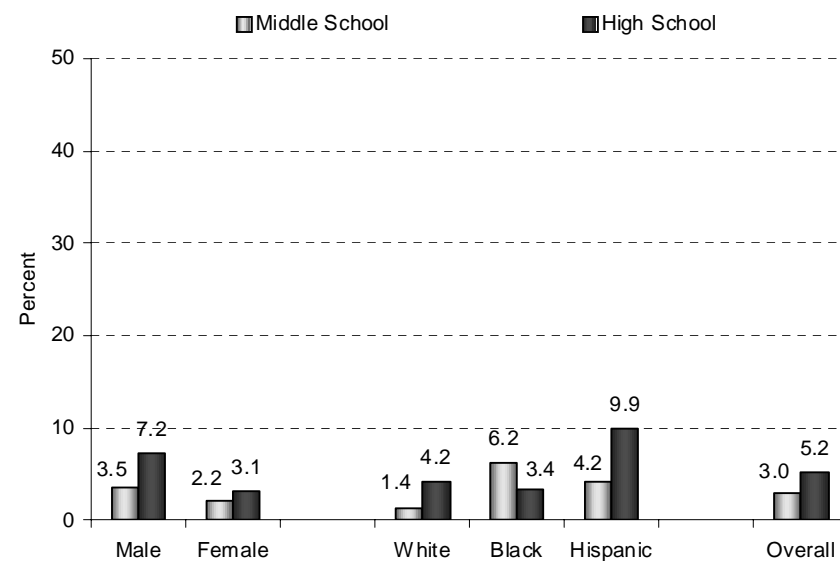
Students were asked about smoking tobacco in a pipe during the past 30 days. Students were considered to be current pipe tobacco users if they reported smoking a pipe at least once within the past 30 days.

- 3.0 percent of middle school students and 5.2 percent of high school students in Illinois currently smoke pipes.
- Between grades six and 12, there is no significant change in the rates of current pipe smoking.
- At the middle school level, there is no significant difference between male (3.5%) and female students (2.2%) in their rates of pipe smoking. In high school, however, male students (7.2%) are significantly more likely than female students (3.1%) to be current pipe smokers.
- In middle school, black (6.2%) and Hispanic students (4.2%) are significantly more likely than white students (1.4%) to be current pipe smokers. At the high school level, Hispanic students (9.9%) are significantly more likely than white (4.2%) or black students (3.4%) to be current pipe smokers.
- Between middle school and high school, there is no significant change in the rate of pipe smoking among female students (2.2% and 3.1%, respectively), but there is a significant increase in pipe smoking among male students (3.5% and 7.2%, respectively).
- Between middle school and high school, there is no significant change in the rate of pipe smoking among black students (6.2% and 3.4%, respectively), but there are significant increases in the rates of pipe smoking among white (1.4% and 4.2%, respectively) and Hispanic students (4.2% and 9.9%, respectively).

Percent of students who smoked a pipe at least once in the past 30 days by SCHOOL GRADE



Percent of students who smoked a pipe at least once in the past 30 days by GENDER, RACE/ETHNICITY, and SCHOOL TYPE



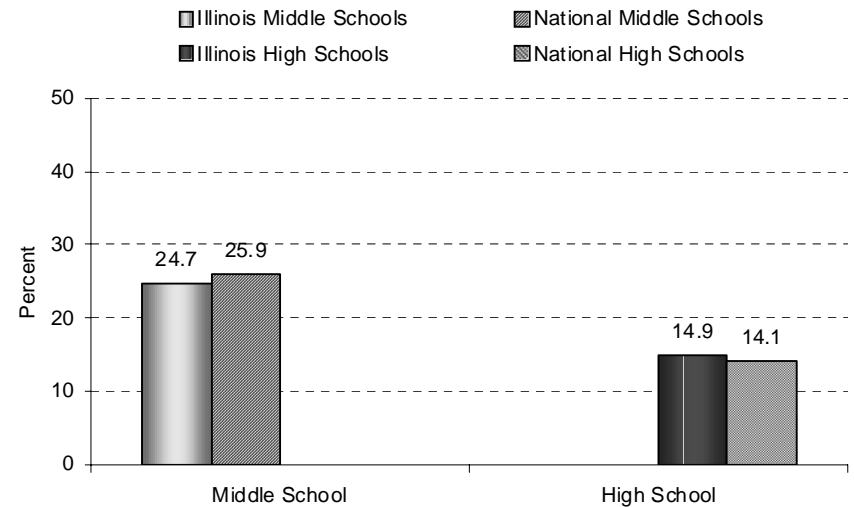
Age of Initiation

“How old were you when you smoked a whole cigarette for the first time?”

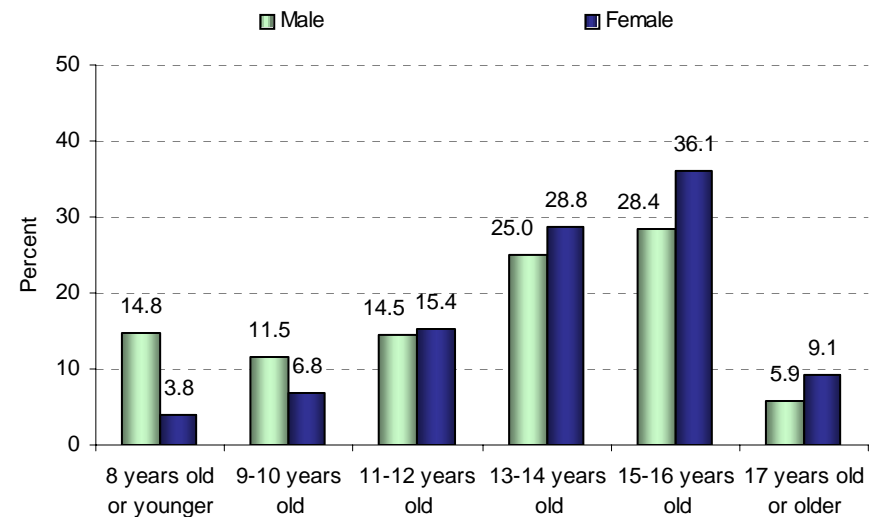
Students were asked how old they were when they smoked a whole cigarette for the first time. Two indicators of early use were assessed: the proportion of students who have ever smoked who smoked a whole cigarette before age 11, and the age at which high school students who have ever smoked reported smoking their first whole cigarette.

- 24.7 percent of Illinois middle school students and 14.9 percent of Illinois high school students report smoking a whole cigarette for the first time before the age of 11. These rates are comparable to the national averages for middle school and high school students (25.9% and 14.1%, respectively).³
- 39.5 percent of male high school students and 44.2 percent of female high school students report smoking their first whole cigarette in early adolescence (11 to 14 years of age). The greatest proportion of male and female high school students report smoking their first whole cigarette between the ages of 15 and 16.

Percent of Illinois and U.S. students who smoked a whole cigarette before 11 years of age by SCHOOL TYPE



Age high school students smoked their first whole cigarette by GENDER



³ National Youth Tobacco Survey data are from: U.S. Centers for Disease Control and Prevention, <http://www.cdc.gov/tobacco/NYTS/nyts2004.htm>.

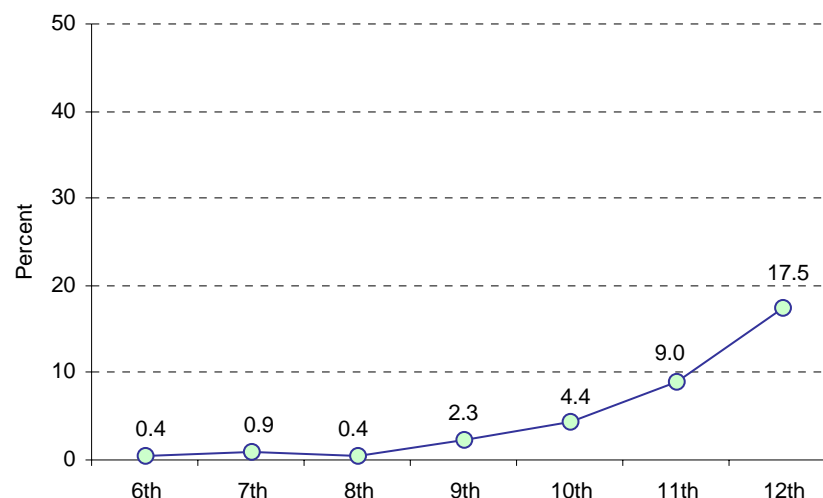
Frequent Cigarette Smoking

“During the past 30 days, on how many days did you smoke cigarettes?”

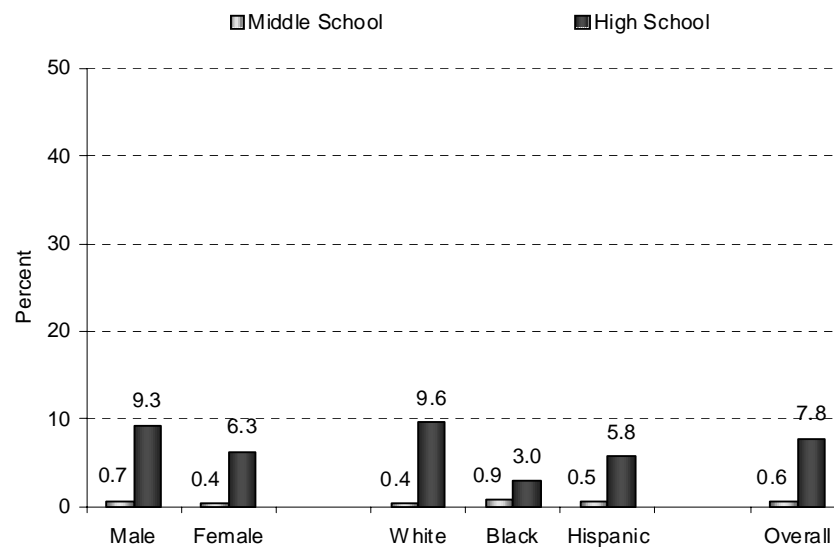
To determine how frequently students smoke cigarettes, they were asked about their frequency of smoking in the past 30 days. Students were considered to be frequent cigarette smokers if they reported smoking cigarettes on 20 or more of the past 30 days.

- 0.6 percent of middle school students and 7.8 percent of high school students in Illinois smoke cigarettes frequently (on 20 or more of the past 30 days).
- Rates of frequent cigarette smoking increase steadily between grades six and 12, with a significant increase between grades eight (0.4%) and nine (2.3%).
- In both middle school and high school, there is no significant difference between male (0.7% and 9.3%, respectively) and female students (0.4% and 6.3%, respectively) in their rates of frequent cigarette smoking.
- In middle school, there are no significant differences among white (0.4%), black (0.9%), and Hispanic students (0.5%) in their rates of frequent cigarette smoking. At the high school level, however, white students (9.6%) are significant more likely than black students (3.0%) to be frequent cigarette smokers.
- Between middle school and high school, there are significant increases in the rates of frequent cigarette smoking among male students (0.7% and 9.3%, respectively) and female students (0.4% and 6.3%, respectively).
- Between middle school and high school, there are significant increases in the rates of frequent cigarette smoking among white (0.4% and 9.6%, respectively) and Hispanic students (0.5% and 5.8%, respectively).

Percent of students who smoked cigarettes frequently in the past 30 days by SCHOOL GRADE



Percent of students who smoked cigarettes frequently in the past 30 days by GENDER, RACE/ETHNICITY, and SCHOOL TYPE



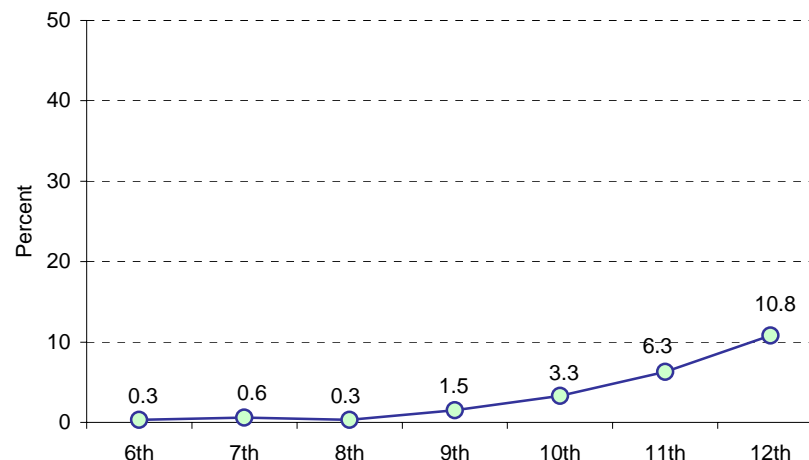
Daily Cigarette Smoking

“During the past 30 days, on how many days did you smoke cigarettes?”

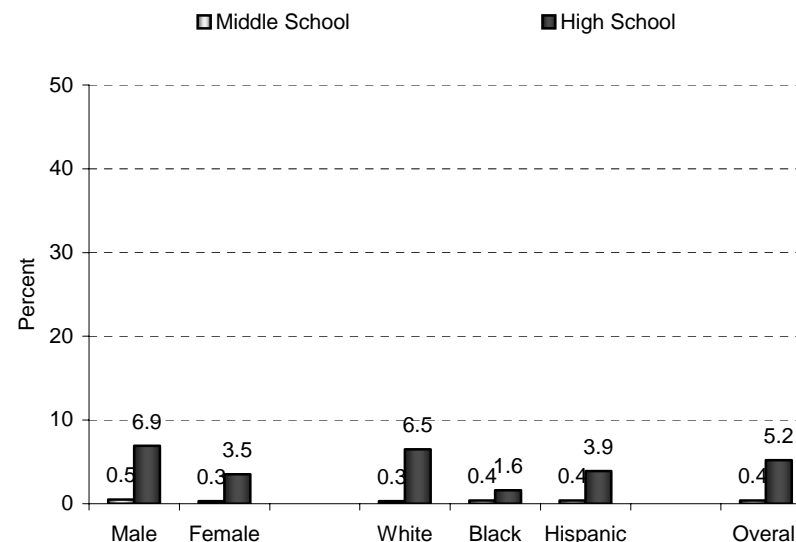
Another measure used to assess frequency of cigarette smoking is daily cigarette smoking. Students were considered to be daily cigarette smokers if they reported smoking cigarettes each of the past 30 days.

- 0.4 percent of middle school students and 5.2 percent of high school students in Illinois report that they smoked cigarettes each of the past 30 days.
- Between grades seven (0.6%) and 10 (3.3%), there is a significant increase in the percentage of students who report having smoked cigarettes each of the past 30 days.
- In both middle school and high school, there is no significant difference in the percentage of male (0.5% and 6.9%, respectively) and female students (0.3% and 3.5%, respectively) who smoked cigarettes each of the past 30 days.
- In middle school and high school, there are no significant differences in the rates of daily smoking among white (0.3% and 6.5%, respectively), black (0.4% and 1.6%, respectively), and Hispanic students (0.4% and 3.9%, respectively).
- Between middle school and high school, there are significant increases in the rates of daily cigarette smoking among male (0.5% and 6.9%, respectively) and female students (0.3% and 3.5%, respectively).
- Between middle school and high school, there is no significant change in the rate of daily smoking among black students (0.4% and 1.6%, respectively), but there are significant increases in the rates among white (0.3% and 6.5%, respectively) and Hispanic students (0.4% and 3.9%, respectively).

Percent of students who smoked cigarettes each of the past 30 days by SCHOOL GRADE



Percent of students who smoked cigarettes each of the past 30 days by GENDER, RACE/ETHNICITY, and SCHOOL TYPE



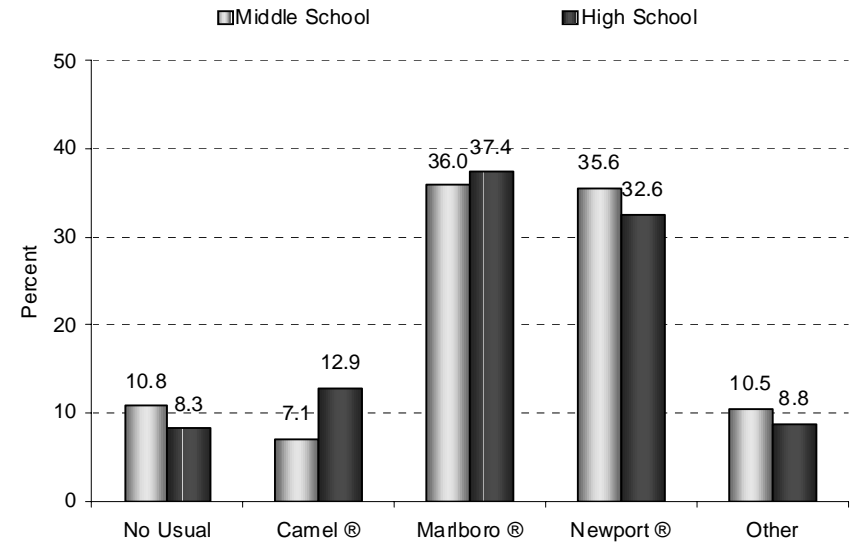
Cigarette Preferences

“During the past 30 days, what brand of cigarettes did you usually smoke? (Choose only one answer)”

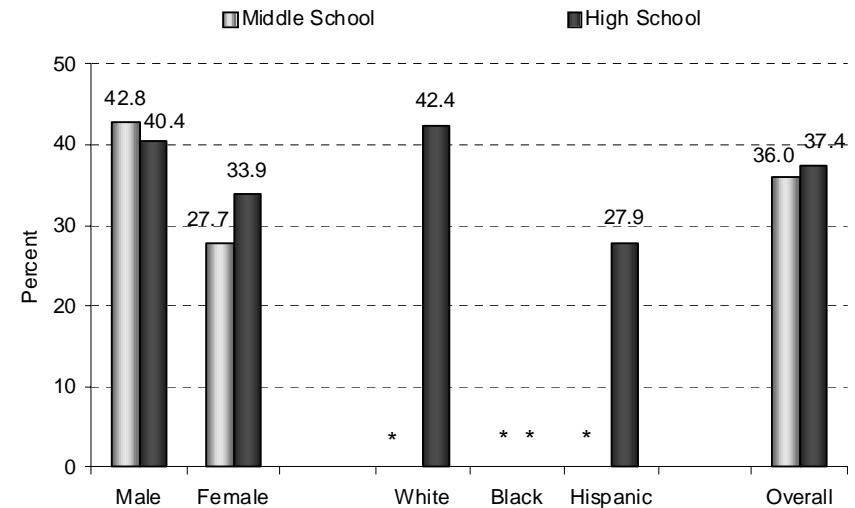
Students who are current smokers (had smoked a cigarette on at least one of the past 30 days) were asked which brand of cigarettes they usually smoked in the past 30 days (i.e., no usual brand; Camel®; Marlboro®; Newport®; Virginia Slims®; GPC®, Basic®, or Doral®; or some other brand).

- In both middle school and high school, Marlboro® cigarettes are the brand of choice (36.0% and 37.4%, respectively).
- In both middle school and high school, significantly more students smoke Marlboro® cigarettes (36.0% and 37.4%, respectively) than Camel® cigarettes (7.1% and 12.9%, respectively), other brands of cigarettes (10.5% and 8.8%, respectively), or no usual brand of cigarettes (10.8% and 8.3%, respectively).
- In middle school, there is no significant difference in the percentage of male (42.8%) and female students (27.7%) who smoke Marlboro® cigarettes.
- In high school, there are no significant differences in the percentage of male (40.4%) and female students (33.9%) or white (42.4%) and Hispanic students (27.9%) who smoke Marlboro® cigarettes.

Cigarette preferences during the past 30 days among current smokers by SCHOOL TYPE



Percent of students who usually smoke Marlboro® cigarettes by GENDER, RACE/ETHNICITY, and SCHOOL TYPE



* Data not presented for white, black, or Hispanic middle school students or black high school students, n < 35.

Usual Source & Place of Purchase

“During the past 30 days, how did you usually get your own cigarettes?”

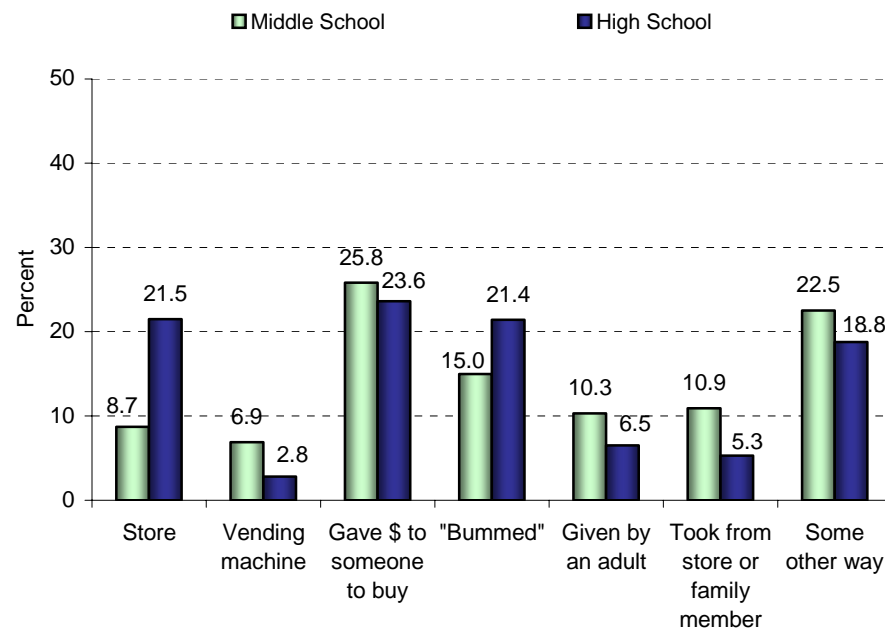
“During the past 30 days, where did you buy the last pack of cigarettes you bought? (Choose only one answer)”

Students were asked about their usual source of cigarettes in the past 30 days. Students also were asked about where they purchased their last pack of cigarettes within the past 30 days.

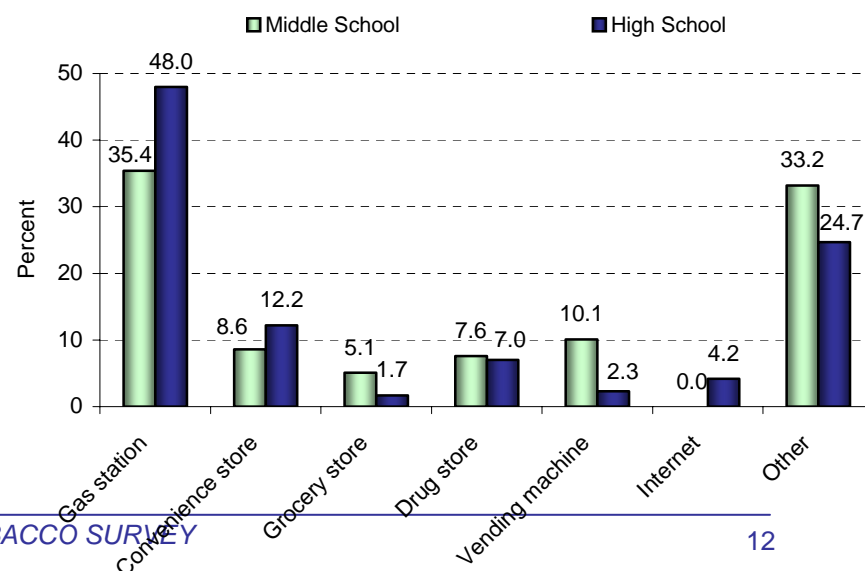
- More than one-half of middle school (62.0%) and high school (56.8%) students who currently smoke obtain their cigarettes from social sources⁴, rather than buying them directly from a store or vendor.
- The most common ways to obtain cigarettes among middle school students who smoke are by giving money to someone else to purchase them (25.8%) or some other means (22.5%).
- High school students who smoke most commonly obtain cigarettes by giving money to someone else to buy them (23.6%) or by “bumming” them from someone else (21.4%).
- There is no significant difference between middle school and high school students with respect to their usual sources of cigarettes.
- High school students (4.2%) are significantly more likely than middle school students (0.0%) to purchase cigarettes from an Internet source.
- Gas stations and “other” sources are the most common places of purchase for middle school (35.4% and 33.2%, respectively) and high school students who currently smoke (48.0% and 24.7%, respectively).

⁴ Social sources include giving money to other people to purchase cigarettes, “bumming” them from someone else, being given cigarettes by an adult, or taking them from a store or family member.

Usual source of cigarettes during the past 30 days among underage current smokers by SCHOOL TYPE



Place of purchase of last pack of cigarettes during the past 30 days among underage current smokers by SCHOOL TYPE



ID Request & Sale Refusal to Minors

“When you bought or tried to buy cigarettes in a store during the past 30 days, were you ever asked to show proof of age?”

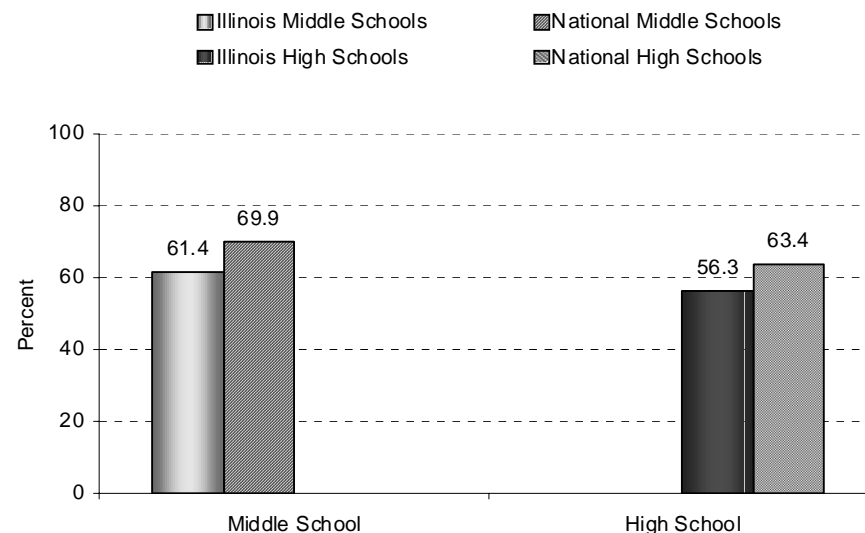
“During the past 30 days, did anyone ever refuse to sell you cigarettes because of your age?”

In the state of Illinois, it is illegal to sell cigarettes to any persons under the age of 18. Students who tried to purchase cigarettes in a store within the past 30 days were asked if they ever had to show proof of age. Students also were asked if, during the past 30 days, anyone refused to sell them cigarettes because of their age. The results are for students who were younger than 18 years old and who tried to buy cigarettes at a store within the past 30 days.

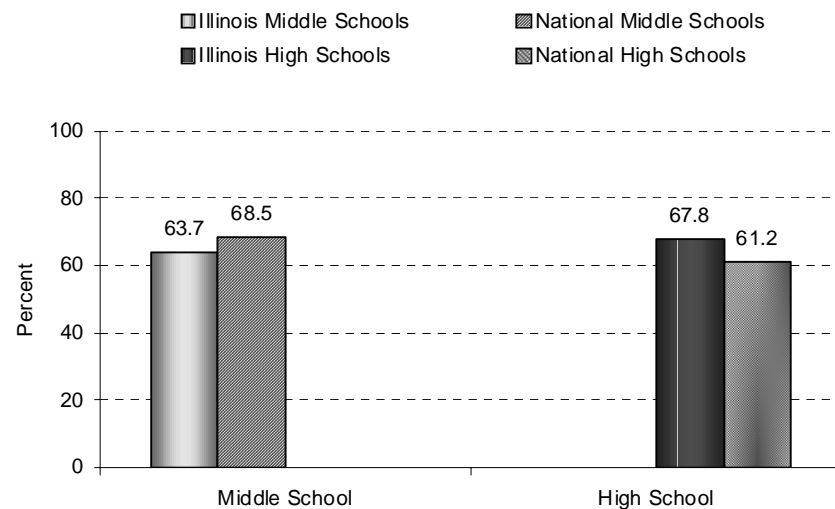
- More than one-half of Illinois middle school and high school students (61.4% and 56.3%, respectively) reported they have not been asked to show ID when purchasing cigarettes in a store during the past 30 days, which is comparable to data from middle school and high school students nationwide (69.9% and 63.4%, respectively).⁵
- Nearly two-thirds (63.7%) of Illinois middle school students reported they were not refused purchase of cigarettes because of their age, which is comparable to the national average for middle school students (68.5%).
- More than two-thirds (67.8%) of Illinois high school students reported they were not refused purchase of cigarettes because of their age, which is comparable to data from high school students nationwide (61.2%).

⁵ National Youth Tobacco Survey data are from: U.S. Centers for Disease Control and Prevention, <http://www.cdc.gov/tobacco/NYTS/nyts2004.htm>.

Percent of Illinois and U.S. underage current smokers who were not asked for ID when buying cigarettes in a store by SCHOOL TYPE



Percent of Illinois and U.S. underage current smokers who were not refused purchase of cigarettes because of age by SCHOOL TYPE



Ease of Access

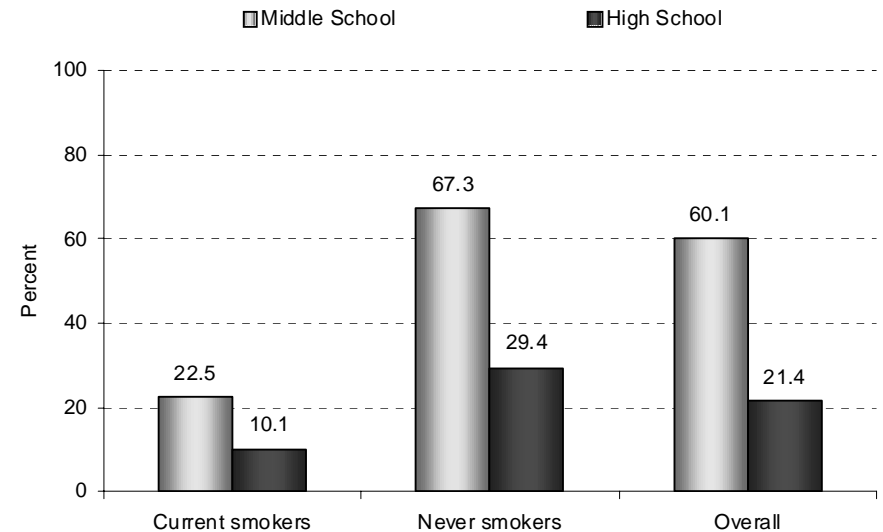
“Do you think it would be easy or hard for you to get cigarettes if you wanted some?”

“If you wanted to BUY cigarettes, do you think it would be easy or hard for you to find a store in your community that would sell you cigarettes?”

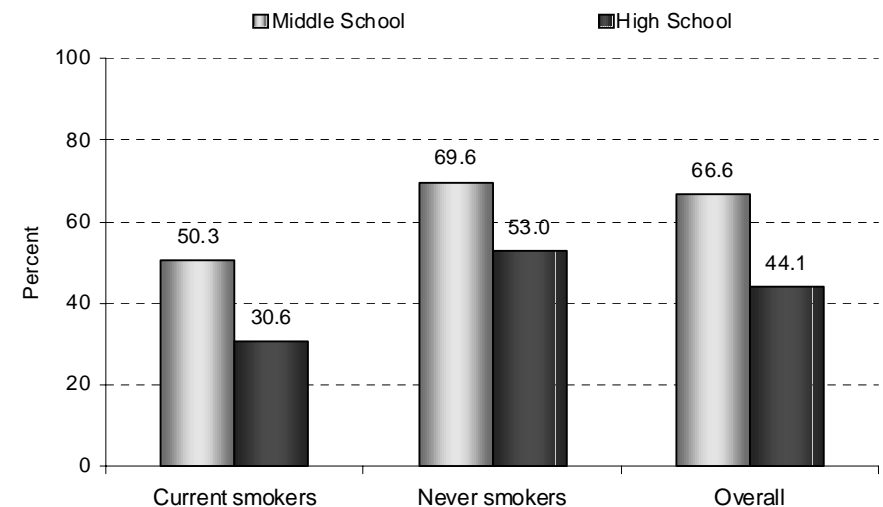
Students were asked questions about their perceptions regarding the ease of obtaining cigarettes in their communities. Students were considered to be current smokers if they reported smoking cigarettes at least once within the past 30 days.

- Middle school students (60.1%) are significantly more likely than high school students (21.4%) to perceive it to be difficult to obtain cigarettes.
- Among current smokers, there is no significant difference between middle school (22.5%) and high school students (10.1%) in their perception that it is difficult to obtain cigarettes. Among students who have never smoked, however, middle school students (67.3%) are significantly more likely than high school students (29.4%) to believe that it would be difficult to obtain cigarettes.
- Middle school and high school students who have never smoked (67.3% and 29.4%, respectively) are significantly more likely than those who are current smokers (22.5% and 10.1%, respectively) to believe that it would be difficult to obtain cigarettes.
- Overall, middle school students (66.6%) are significantly more likely than high school students (44.1%) to believe it would be difficult to buy cigarettes from a store in their community.
- In both middle school and high school, students who have never smoked (69.6% and 53.0%, respectively) are significantly more likely than those who are current smokers (50.3% and 30.6%, respectively) to believe that it would be difficult to buy cigarettes from a store in their community.

Students' perception that it is difficult to obtain cigarettes by SCHOOL TYPE and SMOKING STATUS



Students' perception that it is difficult to buy cigarettes in their community by SCHOOL TYPE and SMOKING STATUS



Cigarette Smoking on School Property⁶

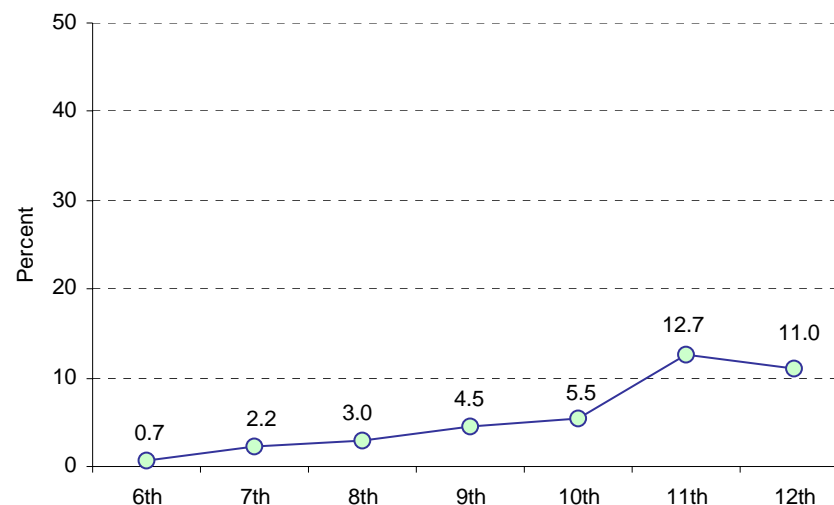
“During the past 30 days, on how many days did you smoke cigarettes on school property?”

Students were asked about smoking cigarettes on school property. Students were considered to have currently smoked cigarettes on school property if they had reported smoking a cigarette on school grounds at least once within the past 30 days.

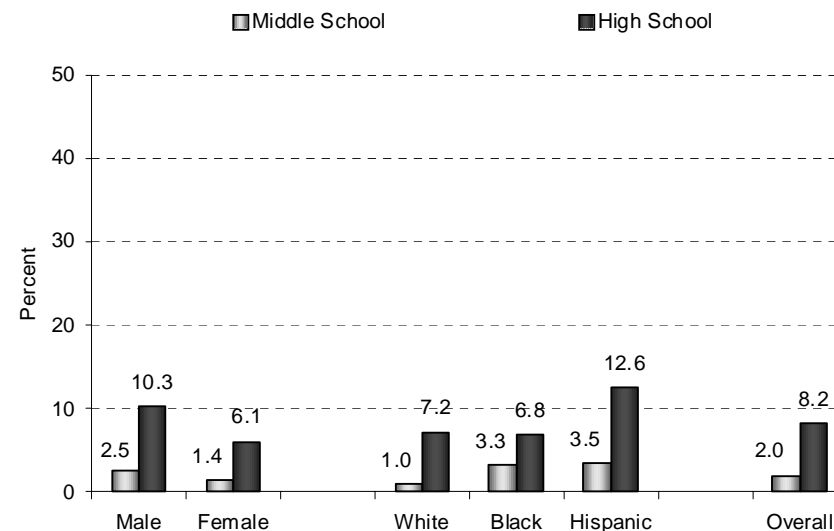
- 2.0 percent of middle school students and 8.2 percent of high school students reported smoking cigarettes on school property in the past 30 days.
- Cigarette use on school property peaks in grade 11 (12.7%).
- In both middle school and high school, there is no significant difference between male (2.5% and 10.3%, respectively) and female students (1.4% and 6.1%, respectively) in their use of cigarettes on school property in the past 30 days.
- In middle school, white students (1.0%) are significantly less likely than black (3.3%) or Hispanic students (3.5%) to smoke cigarettes on school property. At the high school level, however, there are no significant differences among white (7.2%), black (6.8%), and Hispanic students (12.6%) in their use of cigarettes on school property.
- Between middle school and high school, there are significant increases in the use of cigarettes on school property among male (2.5% and 10.3%, respectively) and female students (1.4% and 6.1%, respectively).
- Between middle school and high school, there are significant increases in cigarette use on school property among white (1.0% and 7.2%, respectively) and Hispanic students (3.5% and 12.6%, respectively).

⁶ According to 105 ILCS 5/10-20.5b, tobacco use on school property by school personnel, students or other persons is prohibited.

Percent of students who smoked cigarettes on school property at least once in the past 30 days by SCHOOL GRADE



Percent of students who smoked cigarettes on school property at least once in the past 30 days by GENDER, RACE/ETHNICITY, and SCHOOL TYPE



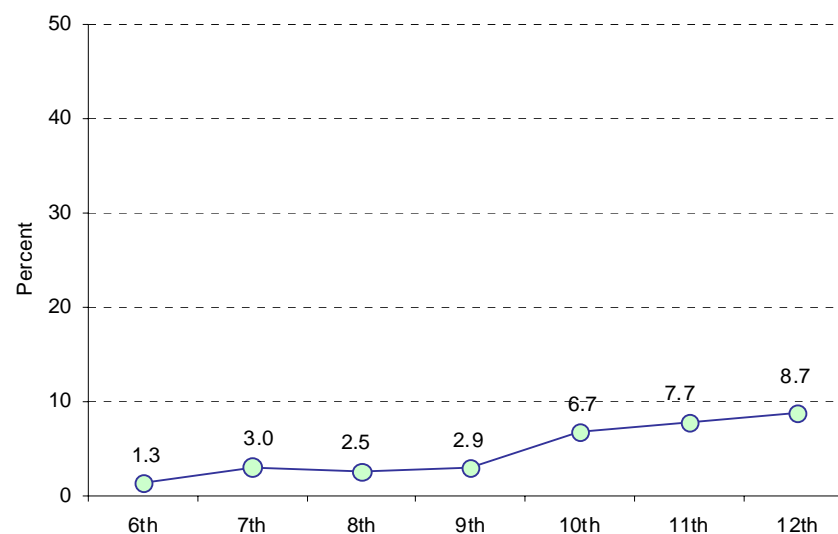
Smokeless Tobacco Use on School Property

“During the past 30 days, on how many days did you use chewing tobacco, snuff, or dip on school property?”

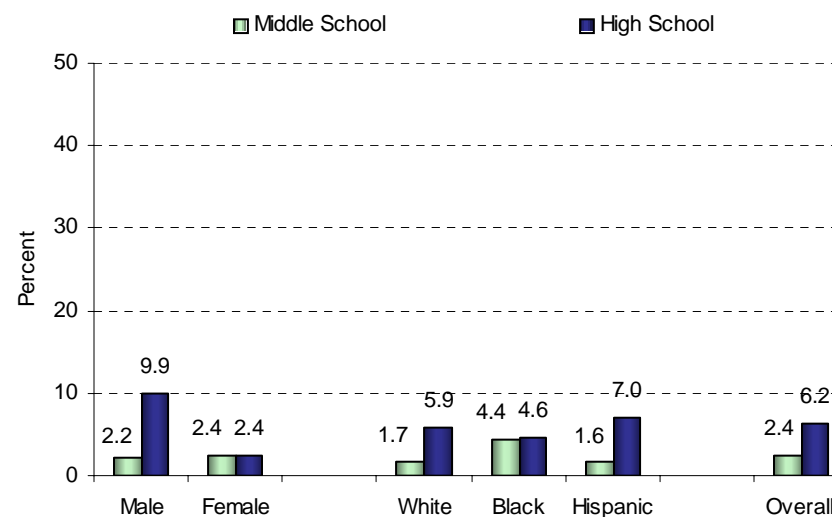
Students were asked about their use of smokeless tobacco on school property. Students were considered to have currently used smokeless tobacco on school property if they had reported using smokeless tobacco on school grounds at least once within the past 30 days.

- 2.4 percent of middle school students and 6.2 percent of high school students reported using smokeless tobacco on school property in the past 30 days.
- Smokeless tobacco use on school property peaks in grade 12 (8.7%).
- In middle school, there is no significant difference between male (2.2%) and female students (2.4%) in their use of smokeless tobacco on school property. At the high school level, however, male students (9.9%) are significantly more likely than female students (2.4%) to report using smokeless tobacco on school property.
- In both middle school and high school, there are no significant differences among white (1.7% and 5.9%, respectively), black (4.4% and 4.6%, respectively), and Hispanic students (1.6% and 7.0%, respectively) in their use of smokeless tobacco on school property.
- Between middle school and high school, there is a significant increase in the use of smokeless tobacco on school property among male students (2.2% and 9.9%, respectively).
- Between middle school and high school, there is no significant change in the use of smokeless tobacco on school property among white (1.7% and 5.9%, respectively) or black students (4.4% and 4.6%, respectively), but there is a significant increase among Hispanic students (1.6% and 7.0%, respectively).

Percent of students who used smokeless tobacco on school property at least once in the past 30 days by SCHOOL GRADE



Percent of students who used smokeless tobacco on school property at least once in the past 30 days by GENDER, RACE/ETHNICITY, and SCHOOL TYPE



Attitudes toward Cessation

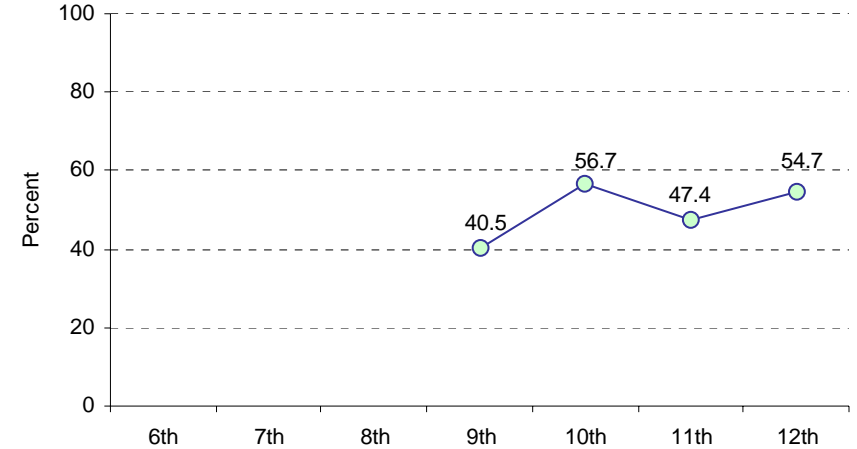
“Do you want to stop smoking cigarettes?”

“Do you think you would be able to quit smoking cigarettes now if you wanted to?”

Students were asked if they want to and believe they can quit smoking cigarettes. Students were considered to be current smokers if they reported smoking cigarettes at least once within the past 30 days. Students were considered to be frequent smokers if they reported smoking cigarettes on 20 or more of the past 30 days.

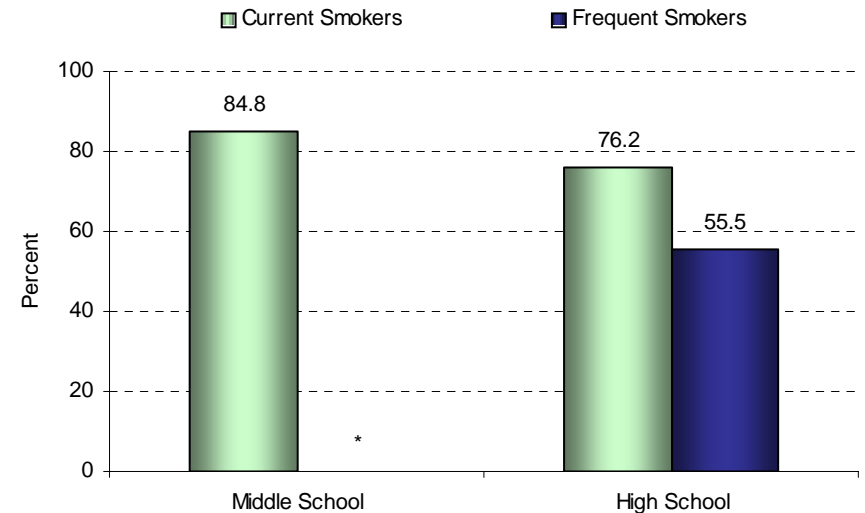
- Approximately one-half of middle school (46.5%) and high school students (51.2%) who currently smoke cigarettes want to quit. – *data not shown*
- The rates of current smokers who want to quit are comparable across grades nine, 10, 11 and 12.
- Among students who currently smoke, 84.8 percent in middle school and 76.2 percent in high school think they can quit smoking cigarettes now if they wanted to.
- More than one-half (55.5%) of high school students who smoke frequently believe they can quit smoking now if they wanted to.
- High school current smokers (76.2%) are significantly more likely than high school frequent smokers (55.5%) to think they can quit smoking now if they wanted to.

Percent of students who currently smoke and want to quit smoking cigarettes by SCHOOL GRADE



Data not presented for 6th, 7th, and 8th grade current smokers, n < 35.

Percent of students who think they can quit smoking now if they wanted to by SCHOOL TYPE and SMOKING STATUS



Data not presented for middle school frequent smokers, n < 35.

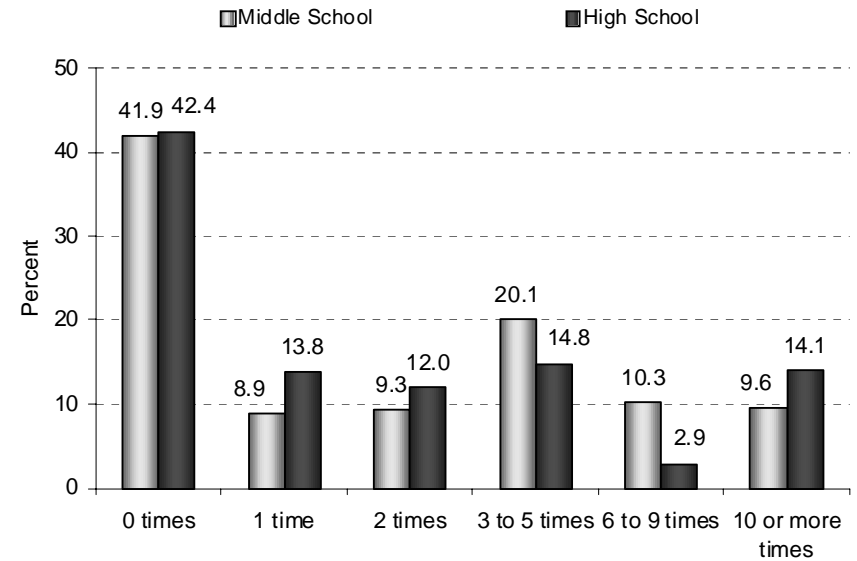
Quit Attempts among Current Smokers

“How many times during the past 12 months have you stopped smoking for one day or longer because you were trying to quit smoking?”

Students were asked about their attempts to quit smoking. Students were considered to be current smokers if they reported smoking cigarettes at least once within the past 30 days.⁷

- More than one-half of middle school and high school students (58.1% and 57.6%, respectively) who currently smoke have tried to quit smoking in the past 12 months. *—data not shown*
- Significantly more middle school students (10.3%) than high school students (2.9%) tried to quit smoking six to nine times in the past 12 months.

Number of times students who currently smoke have tried to quit smoking in the past 12 months by SCHOOL TYPE



⁷ In the definition of “seriously thinking about quitting,” students who responded “not sure” or “I don’t smoke” are not included in the denominator

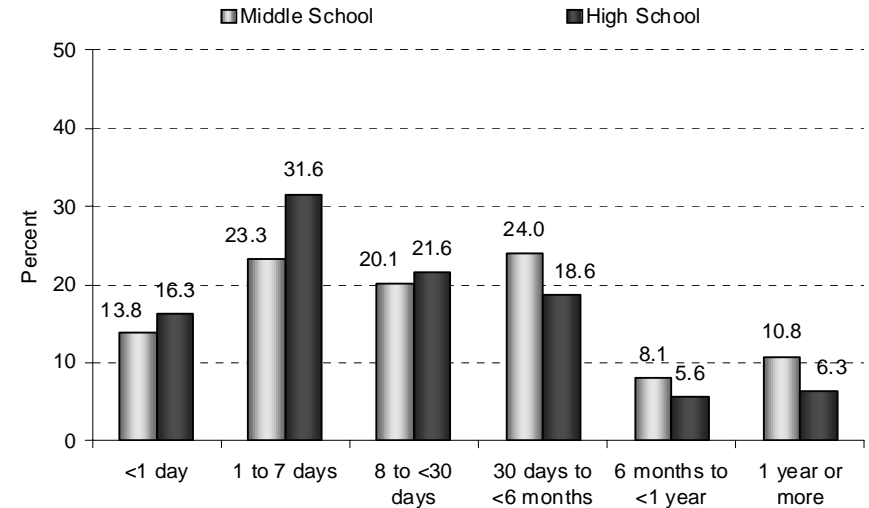
Length of Last Quit Attempt

“When you last tried to quit, how long did you stay off cigarettes?”

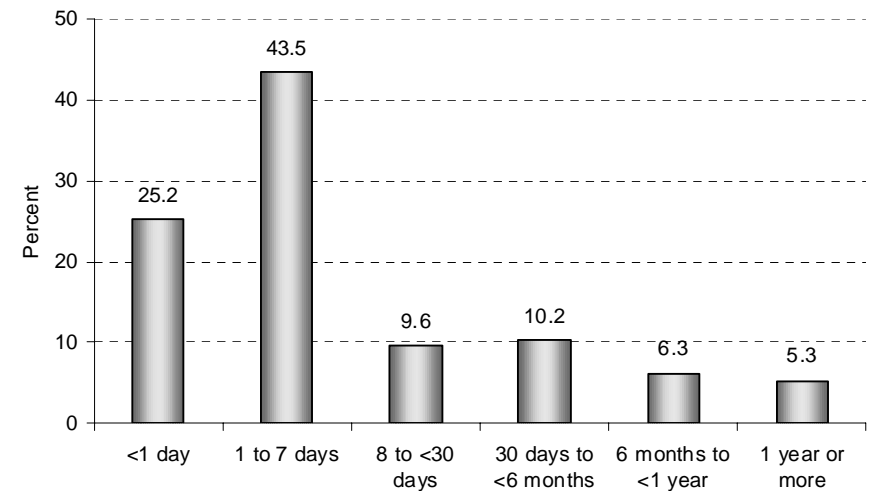
Students were asked about the amount of time that they quit smoking cigarettes during the last time they tried to quit. Students were considered to be current smokers if they reported smoking cigarettes at least once within the past 30 days. Students were considered to be frequent smokers if they reported smoking cigarettes on 20 or more of the past 30 days.

- During their last quit attempt, more than one-half of middle school (57.2%) and two-thirds of high school students (69.5%) who currently smoke were unable to quit cigarettes for 30 days or more.
- Although they currently smoke, about one in 10 middle school and one in six high school students were able to quit smoking for one year or more.
- During their last quit attempt, 78.3 percent of high school students who smoke frequently were unable to quit cigarettes for 30 days or more.

Length of last quit attempt among students who currently smoke by SCHOOL TYPE



Length of last quit attempt among high school students who smoke frequently*



* Data not presented for middle school frequent smokers, n < 35.

Likelihood of Starting to Smoke

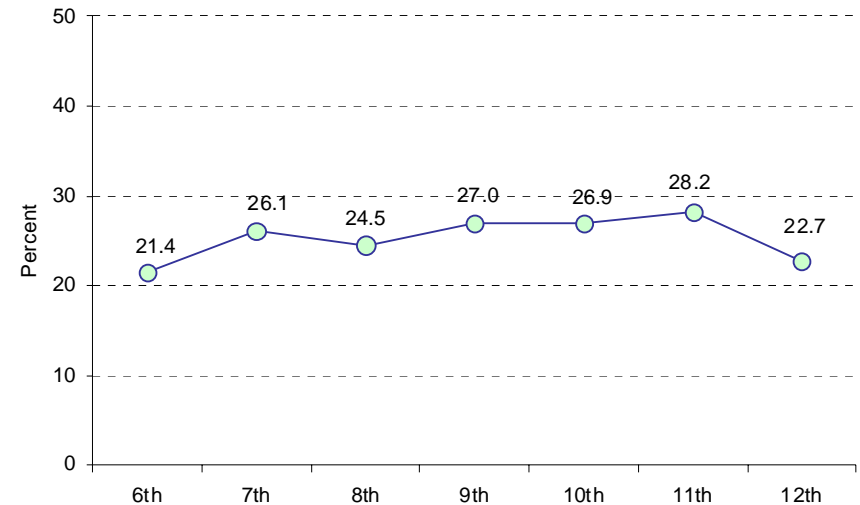
“Do you think you will smoke a cigarette at any time during the next year?”

“If one of your best friends offered you a cigarette, would you smoke it?”

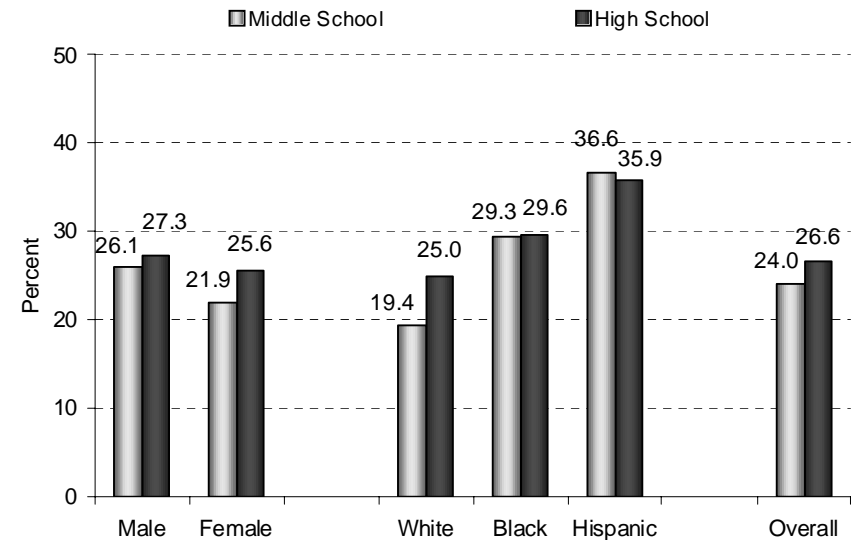
This is a calculated variable to analyze if students who have never smoked cigarettes are likely to begin. Students who think that they may try cigarettes within the next year and who would smoke a cigarette if offered by a best friend are likely to start smoking. Students were considered to have never smoked if they have never tried cigarette smoking, even one or two puffs.

- Approximately one-quarter of middle school (24.0%) and high school students (26.6%) who have never smoked are likely to start smoking.
- The rates of never smokers’ susceptibility to starting smoking remains relatively stable across grades six (21.4%) and 12 (22.7%).
- In middle school and high school, there is no significant difference between male (26.1% and 27.3%, respectively) and female never smokers (21.9% and 25.6%, respectively) in their susceptibility to starting smoking.
- In middle school, Hispanic never smokers (36.6%) are significantly more likely than white never smokers (19.4%) to be susceptible to starting smoking. In high school, however, there are no significant differences among white (25.0%), black (29.6%), and Hispanic never smokers (35.9%).
- Between middle school and high school, there is no significant change in the likelihood of starting smoking among male (26.1% and 27.3%, respectively) and female never smokers (21.9% and 25.6%, respectively).
- Between middle school and high school, there is no significant change in the likelihood of starting smoking among white (19.4% and 25.0%, respectively), black (29.3% and 29.6%, respectively), and Hispanic never smokers (36.6% and 35.9%, respectively).

Percent of students who have never smoked who are likely to start smoking by SCHOOL GRADE



Percent of students who have never smoked who are likely to start smoking by GENDER, RACE/ETHNICITY, and SCHOOL TYPE



Smoking Beliefs and Short-Term Risks

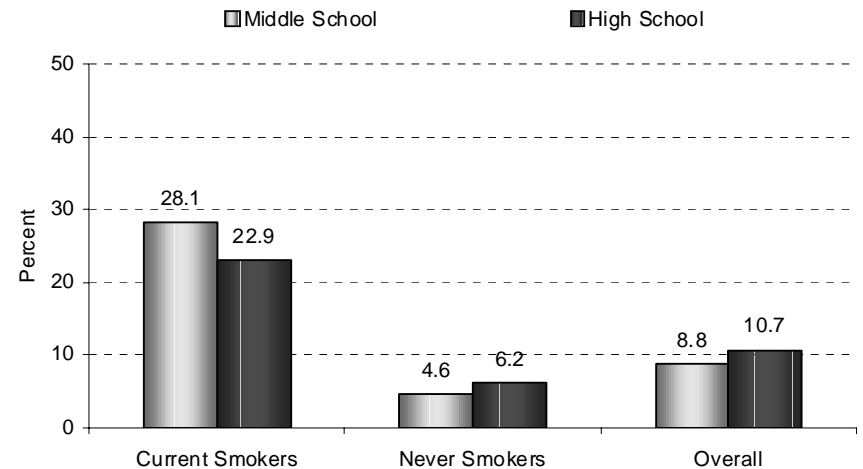
“It is safe for a person to smoke for only a year or two as long as they quit after that.”

“Do you believe that light (low-tar) cigarettes have less, the same, or more risk than regular (full-flavor) cigarettes?”

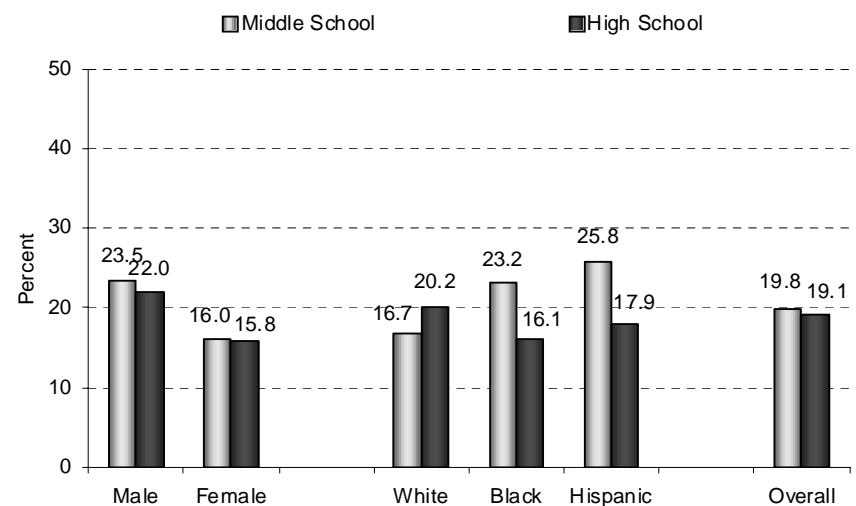
Students were asked about their beliefs regarding the risks related to short-term smoking and smoking light (low-tar) cigarettes. Students were considered to be current smokers if they reported smoking cigarettes at least once within the past 30 days. Students were considered to have never smoked if they have never tried cigarette smoking, even one or two puffs.

- In both middle school and high school, current smokers (28.1% and 22.9%, respectively) are significantly more likely than never smokers (4.6% and 6.2%, respectively) to believe that it is safe to smoke for a year or two.
- Overall, approximately one in five middle school (19.8%) and high school students (19.1%) believe that light (low-tar) cigarettes have less risk than regular (full-flavor) cigarettes.
- In middle school, male students (23.5%) are significantly more likely than female students (16.0%) to believe that low-tar cigarettes are less harmful than regular cigarettes. In high school, however, there is no significant difference between male (22.0%) and female students (15.8%) in their beliefs that low-tar cigarettes are less harmful than regular cigarettes.
- In middle school, Hispanic students (25.8%) are significantly more likely than white students (16.7%) to believe that low-tar cigarettes are less harmful than regular cigarettes. In high school, however, there are no significant differences among white (20.2%), black (16.1%), and Hispanic students (17.9%) in their beliefs that low-tar cigarettes are less harmful than regular cigarettes.

Percent of students who think it is safe to smoke for a year or two, as long as you quit after that by SCHOOL TYPE and SMOKING STATUS



Percent of students who believe light (low-tar) cigarettes have less risk than regular (full-flavor) cigarettes by GENDER, RACE/ETHNICITY, and SCHOOL TYPE



Social Beliefs about Smoking

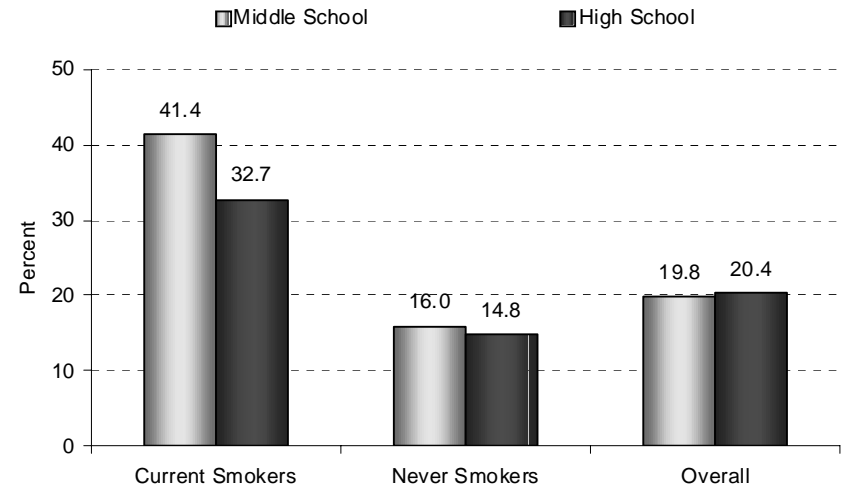
“People who smoke have more friends.”

“Smoking cigarettes makes young people look cool or fit in.”

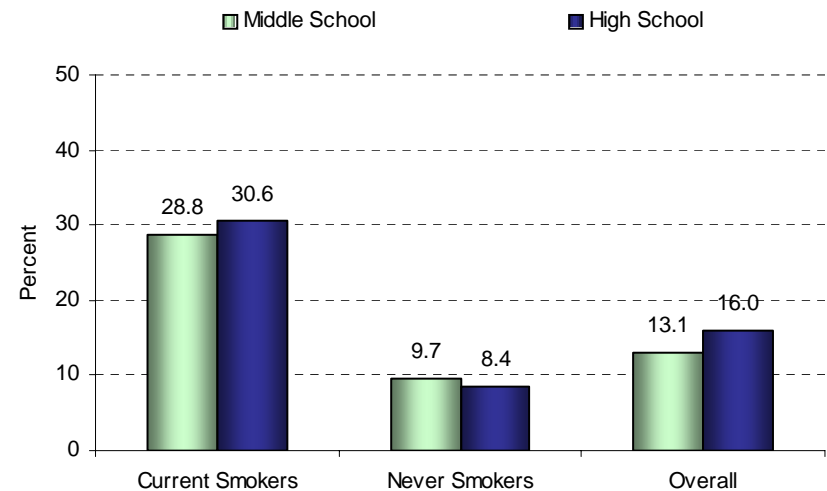
Students were asked to rate a series of statements about the perceived social benefits of smoking. Students were considered to be current smokers if they reported smoking cigarettes at least once within the past 30 days. Students were considered to have never smoked if they have never tried cigarette smoking, even one or two puffs.

- In both middle school and high school, current smokers (41.4% and 32.7%, respectively) are significantly more likely than never smokers (16.0% and 14.8%, respectively) to believe that smokers have more friends.
- In both middle school and high school, current smokers (28.8% and 30.6%, respectively) are significantly more likely than never smokers (9.7% and 8.4%, respectively) to believe that smoking cigarettes makes young people look cool or fit in.

Percent of students who believe that smokers have more friends by SCHOOL TYPE and SMOKING STATUS



Percent of students who believe that smoking cigarettes makes young people look cool or fit in by SCHOOL TYPE and SMOKING STATUS



Smoking among Peers

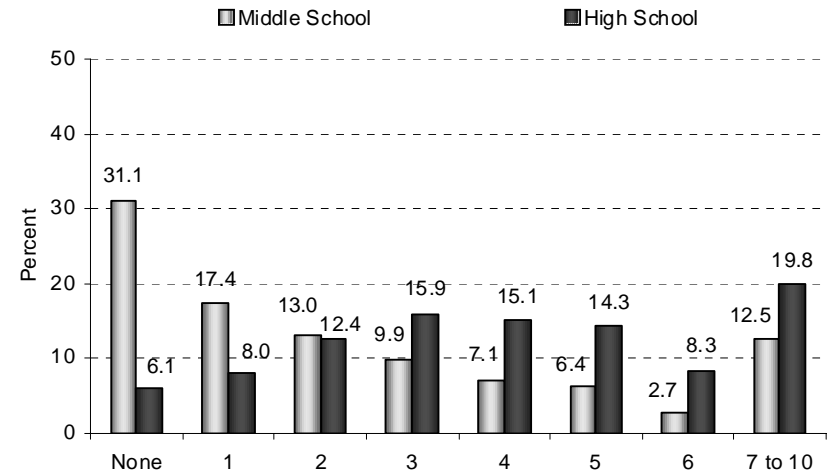
“Out of every 10 students your age, how many do you think smoke cigarettes once a month or more?”

“Do you think your friends would be upset if you smoked?”

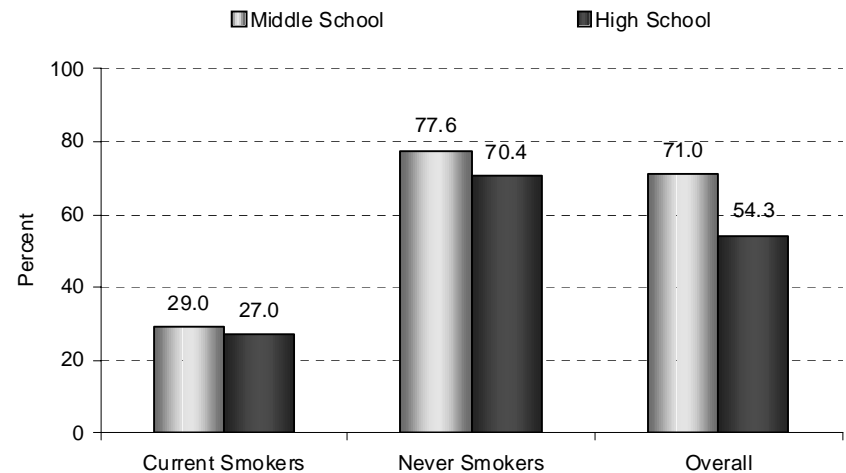
Students were asked to estimate the number of students their age who smoke cigarettes. They also were asked about their friends' feelings about smoking. Students were considered to be current smokers if they reported smoking cigarettes at least once within the past 30 days. Students were considered to have never smoked if they have never tried cigarette smoking, even one or two puffs.

- Nearly one-half of middle school students (48.5%) think that fewer than two out of 10 of their peers smoke cigarettes once a month or more; whereas less than one-sixth of high school students (14.1%) believe the same.
- Middle school students (31.1%) are significantly more likely than high school students (6.1%) to think that none of their peers smoke cigarettes once a month or more.
- In both middle school and high school, students who have never smoked (77.6% and 70.4%, respectively) are significantly more likely than those who currently smoke cigarettes (29.0% and 27.0%, respectively) to think that their friends would be upset if they smoked cigarettes.

Students' perception of the number of people, out of every 10 people their age, who smoke cigarettes once a month or more by SCHOOL TYPE



Percent of students who think that their friends would be upset if they smoked cigarettes by SCHOOL TYPE and SMOKING STATUS



Tobacco Use Discussions with Adults

“In the past 12 months, how often have your parents or guardians discussed the dangers of tobacco use with you?”

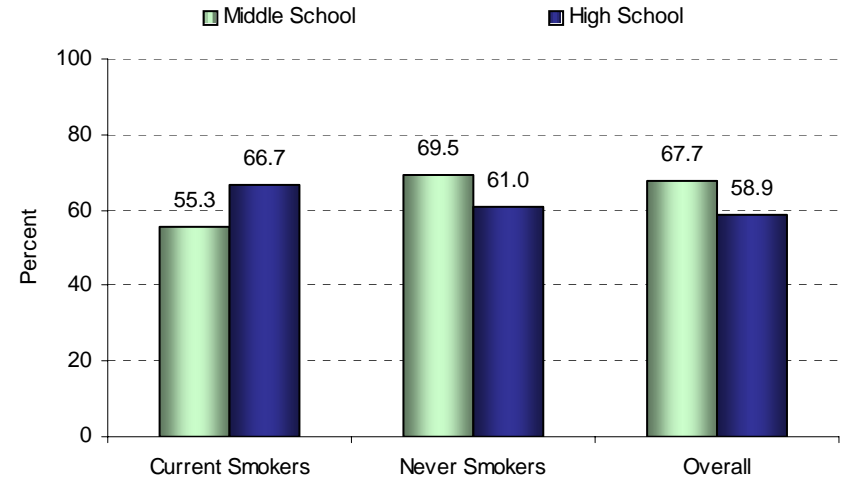
“During the past 12 months, did any doctor, dentist, nurse, or other health professional advise you not to smoke?”⁸

Students were asked if they had received warnings from their parents about the dangers of tobacco use within the past 12 months. They also were asked whether a doctor, dentist, nurse, or other health professional had advised them not to smoke within the past 12 months. Students were considered to be current smokers if they reported smoking cigarettes at least once within the past 30 days. Students were considered to have never smoked if they have never tried cigarette smoking, even one or two puffs.

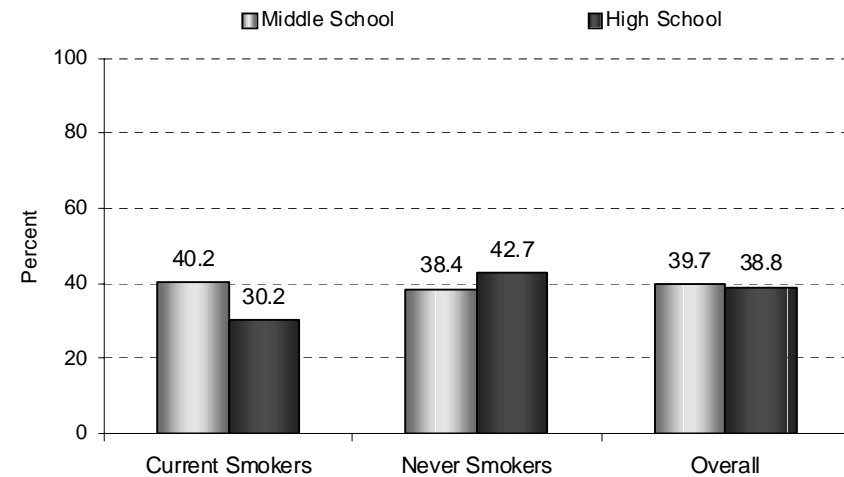
- Among middle school and high school students, there is no significant difference between students who currently smoke (55.3% and 66.7%, respectively) and those who have never smoked (69.5% and 61.0%, respectively) in the percentage who have discussed the dangers of tobacco use with their parents in the past 12 months.
- Among middle school students, there is no significant difference between current smokers (40.2%) and those who have never smoked (38.4%) in the percentage who have been advised by a doctor, dentist, nurse, or other health professional not to smoke in the past 12 months. Among high school students, however, students who have never smoked (42.7%) are significantly more likely than current smokers (30.2%) to have been advised by a doctor, dentist, nurse, or other health professional not to smoke in the past 12 months.

⁸ This item is new for the 2008 IYTS questionnaire. In previous years, students were asked whether, in the past 12 months, a doctor or dentist, or someone in their office, had talked to them about the dangers of tobacco use.

Percent of students who have had discussions regarding tobacco dangers with parents by SCHOOL TYPE and SMOKING STATUS



Percent of students who were advised not to smoke by a doctor, dentist, nurse, or other health professional by SCHOOL TYPE and SMOKING STATUS



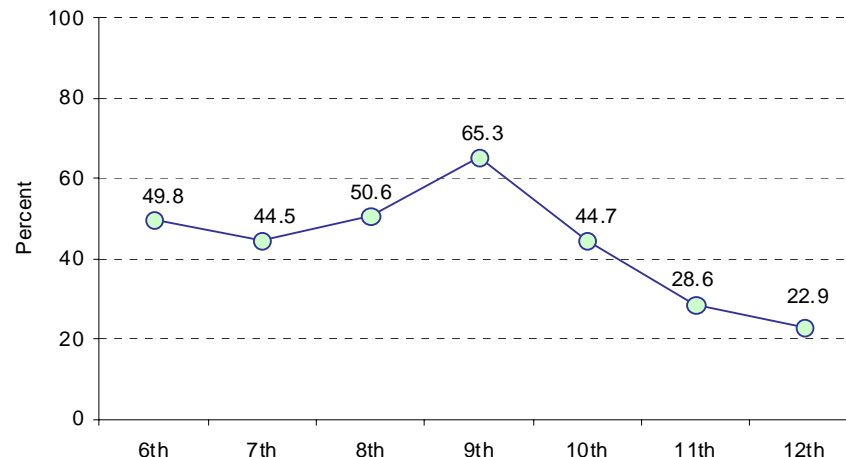
School Education

“During this school year, were you taught in any of your classes about the dangers of tobacco use?”

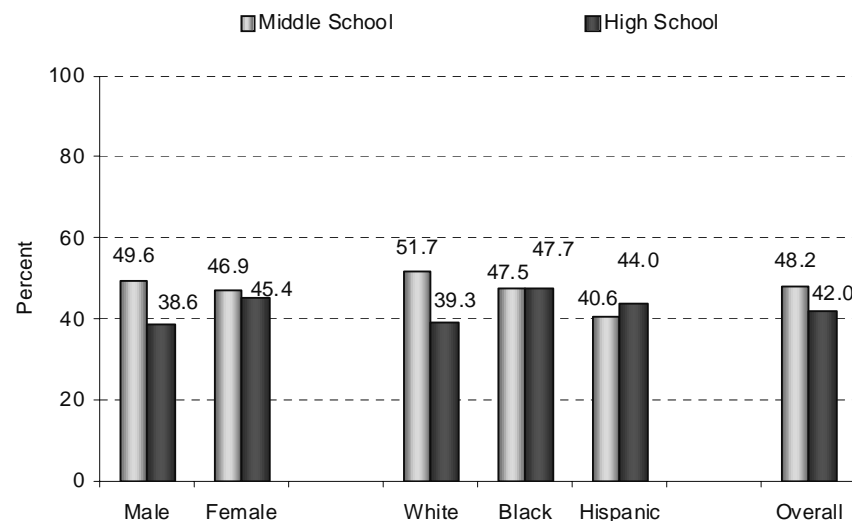
Students were asked about the education they received during the current school year regarding the dangers of tobacco use.⁹

- Approximately one-half of middle school (48.2%) and high school students (42.0%) report they were taught about the dangers of tobacco use during the current school year.
- After grade nine, as grade increases, the percentage of students who report they were taught about the dangers of tobacco use in school decreases; dropping from nearly two-thirds of students in ninth grade (65.3%) to approximately one-fourth in 12th grade (22.9%).
- Between 10th (44.7%) and 12th grade (22.9%), there is a significant decline in the percentage of students who were taught about the dangers of tobacco use in school.
- In both middle school and high school, there is no significant difference between male (49.6% and 38.6%, respectively) and female students (46.9% and 45.4%, respectively) with regard to their school education about the dangers of tobacco use.
- In both middle school and high school, there are no significant differences among white (51.7% and 39.3%, respectively), black (47.5% and 47.7%, respectively), and Hispanic students (40.6% and 44.0%, respectively) in the percentage who were taught about the dangers of tobacco use during the current school year.

Percent of students who were taught during the current school year about the dangers of tobacco use by SCHOOL GRADE



Percent of students who were taught during the current school year about the dangers of tobacco use by GENDER, RACE/ETHNICITY, and SCHOOL TYPE



⁹ The survey was administered during the fall semester of the 2007/2008 school year. In previous years, the IYTS was conducted during the spring of each school year.

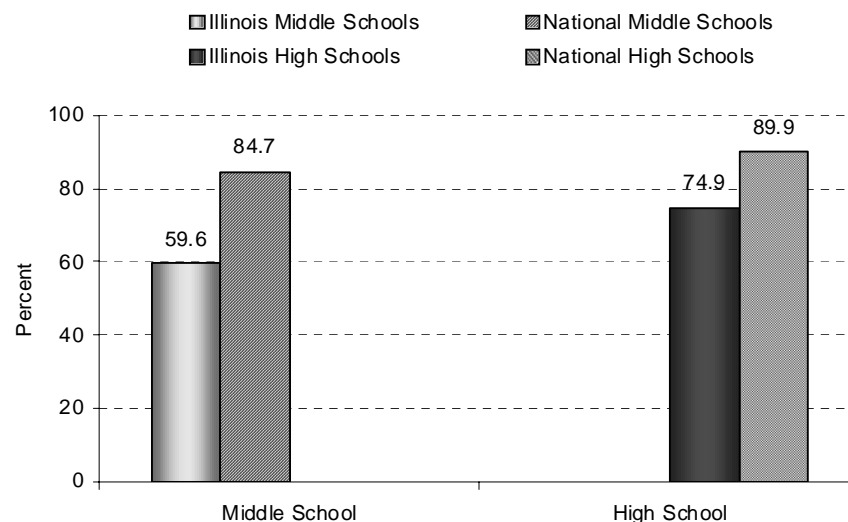
Tobacco Influences in the Media

“During the past 30 days, about how often have you seen or heard commercials on TV, the Internet, or on the radio about the dangers of cigarette smoking?”

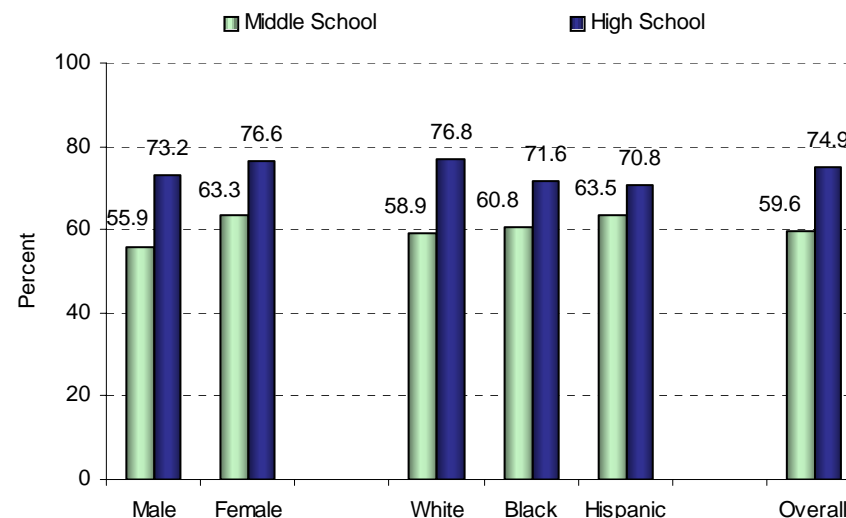
Students were asked about their exposure to anti-tobacco messages in the media in the past 30 days.

- Illinois middle school and high school students (59.6% and 74.9%, respectively) are significantly less likely to have seen or heard anti-tobacco advertisements in the past 30 days than middle and high school students nationally (84.7% and 89.9%, respectively).¹⁰
- In middle school and high school, there is no significant difference between male (55.9% and 73.2%, respectively) and female students (63.3% and 76.6%, respectively) in the rates of exposure to anti-tobacco messages in the media.
- In middle school and high school, there are no significant differences among white (58.9% and 76.8%, respectively), black (60.8% and 71.6%, respectively), and Hispanic students (63.5% and 70.8%, respectively) in the rates of exposure to anti-tobacco messages.
- Between middle school and high school, there are significant increases in students' exposure to anti-tobacco messages in the media among male (55.9% and 73.2%, respectively), female (63.3% and 76.6%, respectively), white students (58.9% and 76.8%, respectively), black students (60.8% and 71.6%, respectively), Hispanic students (63.5% and 70.8%, respectively), and students overall (59.6% and 74.9%, respectively).

Percent of Illinois and U.S. students who saw or heard anti-tobacco advertisements in the past 30 days by SCHOOL TYPE



Percent of students who saw or heard anti-tobacco advertisements in the past 30 days by GENDER, RACE/ETHNICITY, and SCHOOL TYPE



¹⁰ National Youth Tobacco Survey data are from: U.S. Centers for Disease Control and Prevention, <http://www.cdc.gov/tobacco/NYTS/nyts2004.htm>.

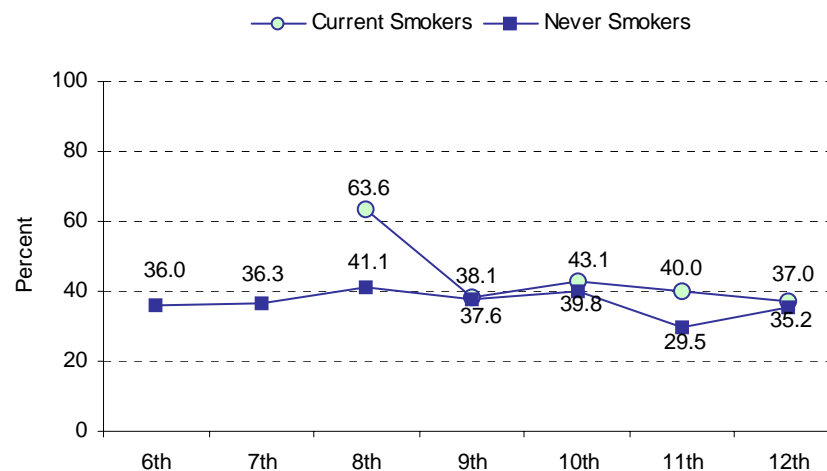
Tobacco Ads on the Internet

“When you are using the Internet, how often do you see ads for tobacco products?”

To assess exposure to tobacco advertisements on the Internet, students were asked how often they see ads for tobacco products when they use the Internet. Students were considered to be current smokers if they reported smoking cigarettes at least once within the past 30 days. Students were considered to have never smoked if they have never tried cigarette smoking, even one or two puffs.

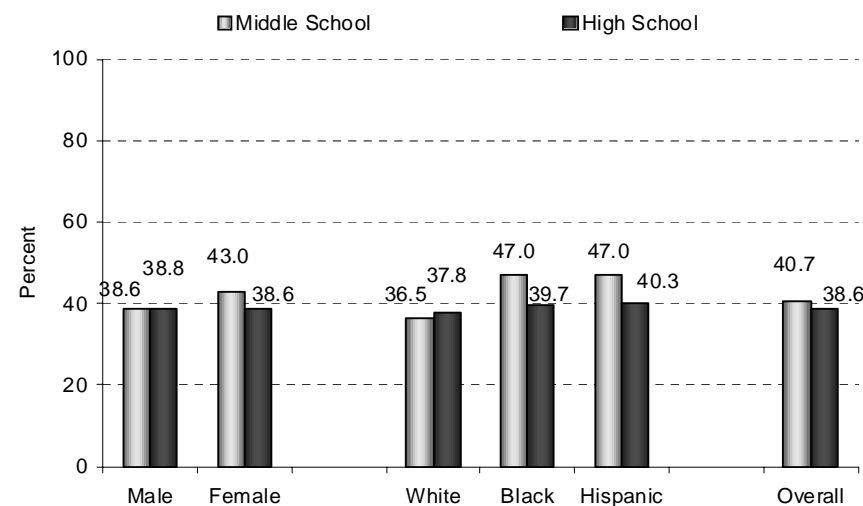
- Overall, approximately four out of 10 middle school and high school students who use the Internet have seen ads for tobacco products on the Internet.
- Middle school students who currently smoke (62.3%) are significantly more likely than middle school students who have never smoked (37.6%) to see advertisements for tobacco products on the Internet. *—data not shown*
- Rates of exposure to tobacco advertisements on the Internet are comparable for high school current smokers (39.0%) and high school students who have never smoked (35.9%). *—data not shown*
- Among students who have never smoked cigarettes, the percent who have seen advertisements for tobacco on the Internet stays fairly stable as grade increases, from 36.0% in sixth grade to 35.2% in 12th grade.
- In middle school and high school, there is no significant difference between male (38.6% and 38.8%, respectively) and female students (43.0% and 38.6%, respectively) with respect to exposure to tobacco advertisements on the Internet.
- In middle school, black students (47.0%) are significantly more likely than white students (36.5%) to report seeing tobacco advertisements on the Internet.
- In high school, there are no significant differences among white (37.8%), black (39.7%), and Hispanic students (40.3%) in their exposure to tobacco advertisements on the Internet.

Percent of students who have seen advertisements for tobacco products on the Internet by SCHOOL GRADE and SMOKING STATUS



* Data not presented for 6th or 7th grade current smokers, n < 35.

Percent of students who have seen advertisements for tobacco products on the Internet by GENDER, RACE/ETHNICITY, and SCHOOL TYPE



Tobacco Advertising

“During the past 12 months, did you buy or receive anything that has a tobacco company name or picture on it?”

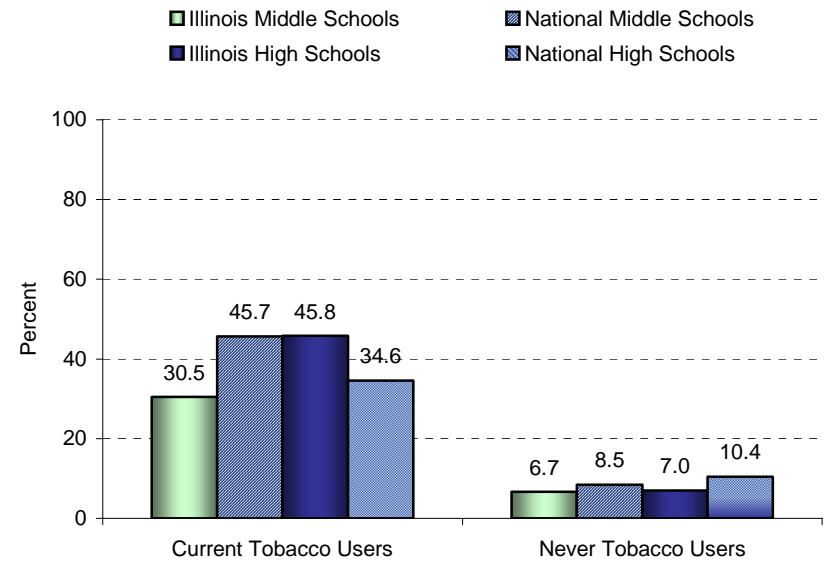
“When you go to a convenience store or gas station, how often do you see ads for cigarettes and other tobacco products or items that have tobacco company names or pictures on them?”

Students were asked if they have received or bought items with tobacco company names or logos, as well as their exposure to such items in convenience stores and gas stations. Students were considered to be current tobacco users if they reported using any tobacco products at least once within the past 30 days. Students were considered to be never tobacco users if they reported never having used any tobacco product. Students were considered to be current smokers if they reported smoking cigarettes at least once within the past 30 days. Students were considered to have never smoked if they have never tried cigarette smoking, even one or two puffs.

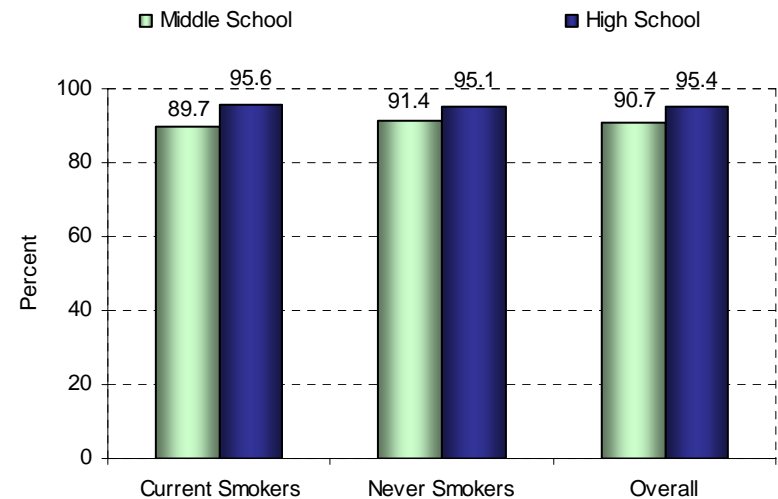
- Illinois middle school students who currently use tobacco (30.5%) are significantly less likely than middle school tobacco users nationally (45.7%) to have bought or received an item with a tobacco company name or picture on it in the past 12 months. At the high school level, Illinois students who currently use tobacco (45.8%) are significantly more likely than high school tobacco users nationally (34.6%) to have bought or received an item with a tobacco company name or picture on it in the past 12 months.¹¹
- 6.7 percent of Illinois middle school never tobacco users bought or received an item with a tobacco company name or picture on it in the past 12 months, which is comparable to the rate of middle school never tobacco users nationally (8.5%). Illinois high school never tobacco users (7.0%) are significantly less likely than high school never tobacco users nationally (10.4%) to have bought or received an item with a tobacco company name or picture on it in the past 12 months.
- 90.7 percent of middle school students and 95.4 percent of high school students, regardless of their smoking status, see ads for tobacco products or tobacco logos when they are in gas stations or convenience stores.

¹¹ National Youth Tobacco Survey data are from: U.S. Centers for Disease Control and Prevention, <http://www.cdc.gov/tobacco/NYTS/nyts2004.htm>.

Percent of Illinois and U.S. students who bought or received anything with a tobacco company name or picture on it in the past 12 months by SCHOOL TYPE and TOBACCO USE STATUS



Percent of students who see ads for tobacco products or tobacco logos when at a gas station or convenience store by SCHOOL TYPE and SMOKING STATUS



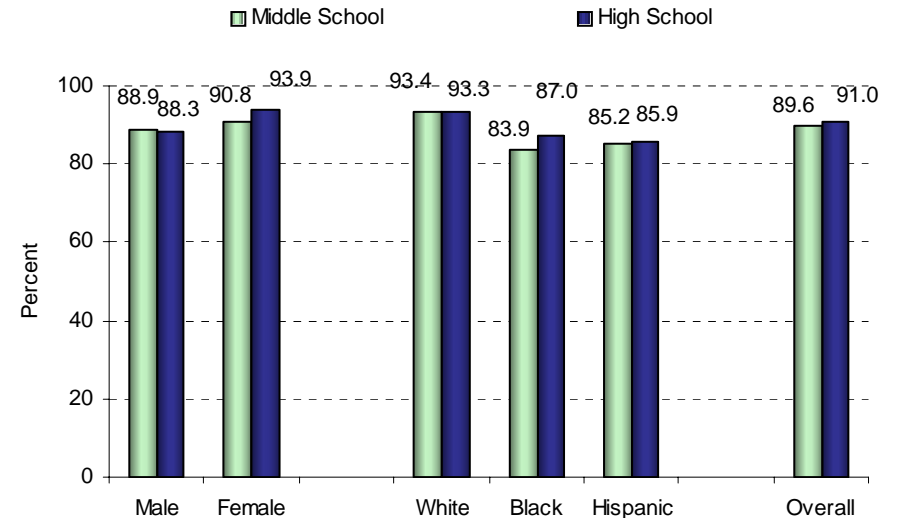
Secondhand Smoke

“Do you think the smoke from other people’s cigarettes is harmful to you?”

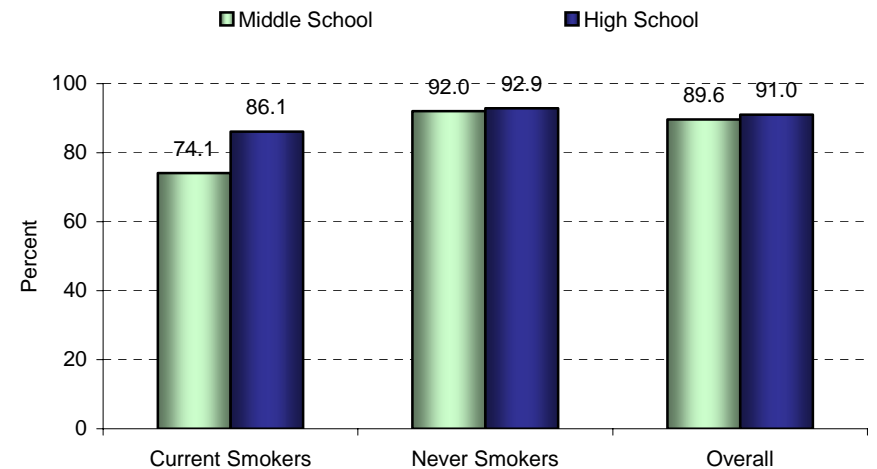
Students were asked if they think secondhand smoke is harmful. Students were considered to be current smokers if they reported smoking cigarettes at least once within the past 30 days. Students were considered to have never smoked if they have never tried cigarette smoking, even one or two puffs.

- Overall, in both middle school and high school, approximately nine out of 10 students believe secondhand smoke is harmful to them.
- In both middle school and high school, there is no significant difference between male (88.9% and 88.3%, respectively) and female students (90.8% and 93.9%, respectively) in their beliefs about the harmfulness of secondhand smoke.
- In middle school, white students (93.4%) are significantly more likely than black (83.9%) or Hispanic students (85.2%) to believe that secondhand smoke is harmful.
- In high school, white students (93.3%) are significantly more likely than Hispanic students (85.9%) to believe that secondhand smoke is harmful.
- In middle school, students who have never smoked (92.0%) are significantly more likely than those who currently smoke (74.1%) to believe that secondhand smoke is harmful. In high school, however, there is no significant difference between students who currently smoke (86.1%) and those who have never smoked (92.9%).

Percent of students who think secondhand smoke is harmful by GENDER, RACE/ETHNICITY, and SCHOOL TYPE



Percent of students who think secondhand smoke is harmful by SCHOOL TYPE and SMOKING STATUS



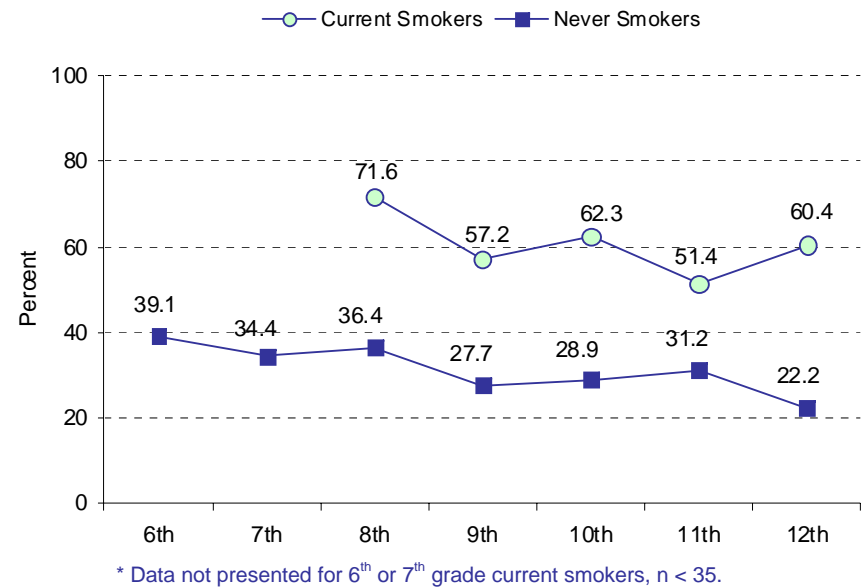
Exposure to Secondhand Smoke in the Home

“Does anyone who lives with you now smoke cigarettes?”

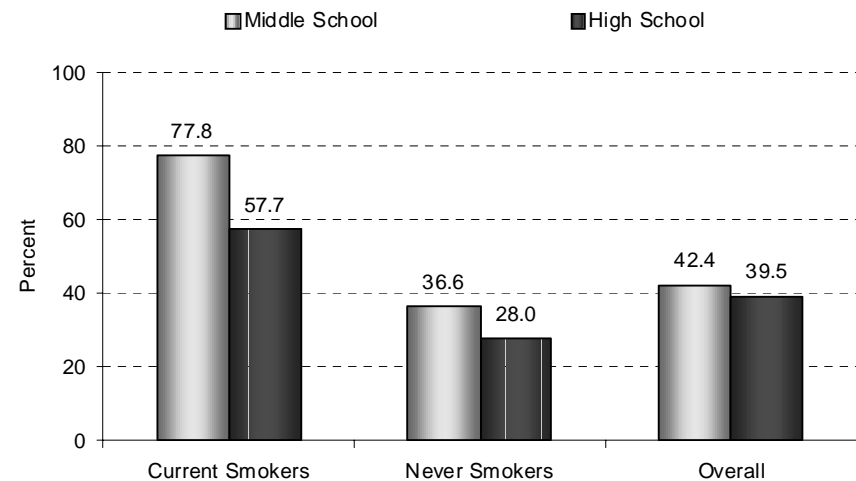
To assess how many students are being exposed to cigarette smoke at home, students were asked if they live with someone who smokes cigarettes. Students were considered to be current smokers if they reported smoking cigarettes at least once within the past 30 days. Students were considered to have never smoked if they have never tried cigarette smoking, even one or two puffs.

- Overall, 42.4 percent of middle school students and 39.5 percent of high school students live with someone who smokes cigarettes.
- The percentage of students who currently smoke and live with someone who smokes varies between just under three-fourths in grade eight (71.6%) to approximately two-thirds in grade 12 (60.4%). The percentage of students who have never smoked who live with someone who smokes also fluctuates across grades, between slightly more than one-third in grade six (39.1%) to approximately one-quarter in grade 12 (22.2%).
- In middle school and high school, students who currently smoke (77.8% and 57.7%, respectively) are significantly more likely than students who have never smoked (36.6% and 28.0%, respectively) to live with someone who smokes cigarettes.

Percent of students who live with someone who smokes cigarettes by SCHOOL GRADE and SMOKING STATUS



Percent of students who live with someone who smokes cigarettes by SCHOOL TYPE and SMOKING STATUS



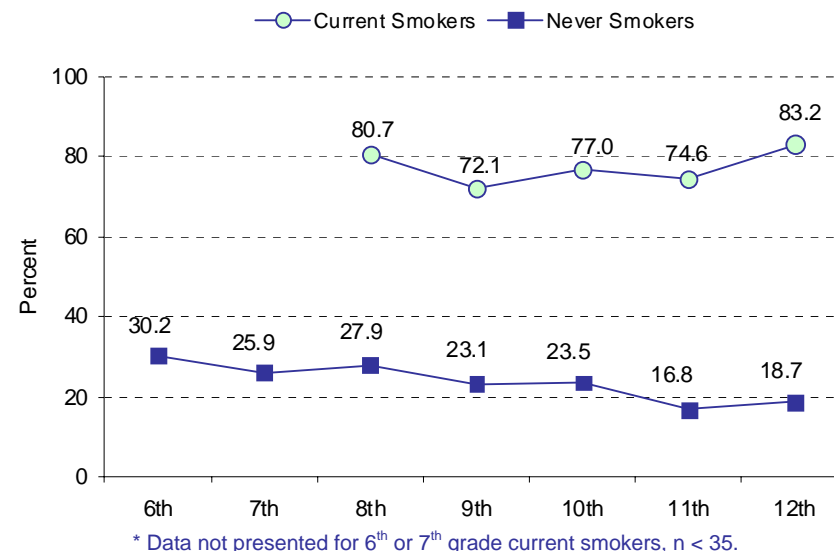
Recent Exposure to Secondhand Smoke in a Car

“During the past seven days, on how many days did you ride in a car with someone who was smoking cigarettes?”

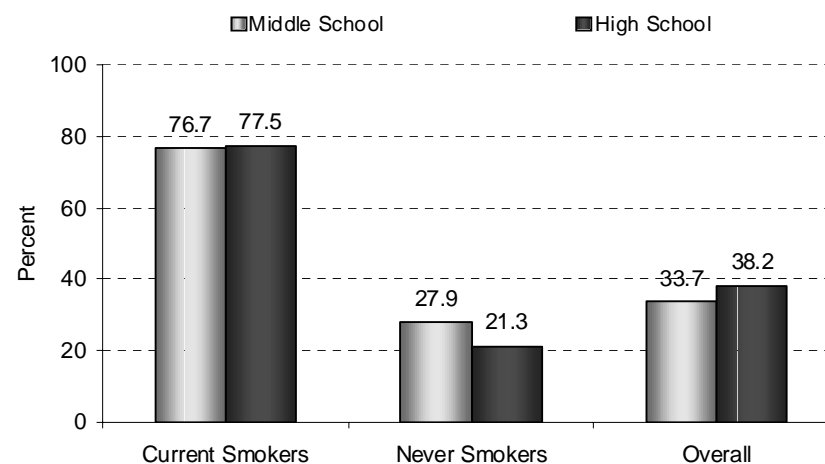
Students were asked if they had ridden in a car with someone who was smoking cigarettes on one or more of the past seven days. Students were considered to be current smokers if they reported smoking cigarettes at least once within the past 30 days. Students were considered to have never smoked if they have never tried cigarette smoking, even one or two puffs.

- Across grades at the middle school and high school level, the rates of current smokers’ recent exposure to secondhand smoke in a car is significantly higher than that of their never smoker peers.
- The percentage of current smokers and never smokers who report recent exposure to secondhand smoke remains relatively stable across grades.
- Regardless of smoking status, 33.7 percent of middle school students and 38.2 percent of high school students were recently exposed to secondhand smoke while in a car. In middle school and high school, current smokers (76.7% and 77.5%, respectively) are significantly more likely than never smokers (27.9% and 21.3%, respectively) to have recently been exposed to secondhand smoke in a car.

Percent of students who rode in a car with someone who was smoking cigarettes during the past seven days by SCHOOL GRADE and SMOKING STATUS



Percent of students who rode in a car with someone who was smoking cigarettes during the past seven days by SCHOOL TYPE and SMOKING STATUS



METHODOLOGY

The purpose of the Illinois Youth Tobacco Survey (IYTS) was to gather attitude, usage and exposure information regarding tobacco products statewide. To accomplish this, the IYTS used a paper-and-pencil questionnaire administered following CDC's methodology for the Youth Tobacco Survey (YTS).

Questionnaire Development

The questionnaire was developed by the Illinois Department of Public Health, in collaboration with the CDC Office on Smoking and Health. The IYTS included a core set of YTS questions developed by CDC, first implemented by a small number of states as early as 1998, and now adopted by the overwhelming majority of states in conducting their own YTS. The questionnaire covered eight topics: tobacco use (bidis, cigarettes, cigars, kreteks, pipes, and smokeless tobacco), exposure to secondhand smoke, smoking cessation, school curriculum, minors' ability to purchase or obtain tobacco products, knowledge and attitudes about tobacco, familiarity with pro-tobacco and anti-tobacco media messages, and demographics. The questionnaire contained 67 items.

Sampling

Sample Design

Separate high school and middle school samples were selected, with an objective of having 95 percent confidence limits of approximately ± 5 percent around key smoking variables. The sampling frame consisted of all public schools containing students enrolled in grades nine through 12 for the high schools and six through eight for the middle schools. A two-stage cluster sample design was used to produce a representative sample of high school students in grades nine through 12 and middle school students in grades six through eight. The sampling program PC-Sample was used to draw both the high school and middle school sample.

Sampling Procedures

School Level – The first-stage sampling frame consisted of all public schools containing any of the grades six through eight for the middle schools and nine through 12 for the high schools. Schools were selected with probability proportional to school enrollment size (PPS).

Class Level – The second sampling stage consisted of systematic equal probability sampling (with a random start) of classes from each middle school and high school that participated in the survey. All second period classes or all sections of a required course in the selected schools were included in the sampling frame.

Student Level – All students in a selected class were eligible to participate in the survey. Students who were absent the day of the survey also were given the opportunity to take it at a later date.

Data Collection

Recruitment of Sampled Districts and Schools

District and school recruitment began in November 2007. Prior to beginning district and school recruitment, letters were sent to the regional tobacco coordinators representing those districts to obtain additional names of supportive contacts, document helpful background information, and ask if the regional contacts would be willing to make pre-contact calls to encourage participation.

Once these contacts were made, tailored letters of invitation were sent out to the school districts. These letters were followed by phone calls directly to the superintendent to answer questions and obtain permission to contact the school. School packets were included with the district invitation packet and the superintendents were asked to forward these on to the principal after their approval was received. The recruitment process sometimes included the completion of special research proposals, attendance at board meetings and principal meetings, and other clearance procedures.

As soon as notification was received that a school packet had been sent to the principal, the principal was called, a contact person was assigned, classes were selected, and a date for data collection was scheduled.

Classroom-level Data Collection

The IYTS was administered between November 2007 and January 2008, by five specially trained field staff. The data collectors were recruited from a variety of sources including local and state retired teacher's associations and local universities. They completed an intensive training that included lectures, simulations, group role-plays, and discussions. Detailed arrangements and survey schedules were set prior to each school visit.

Weighting

A weight has been associated with each questionnaire to reflect the likelihood of sampling each student and to reduce bias by compensating for differing patterns of non-response. The weight used for estimation is given by:

$$W = W1 * W2 * f1 * f2 * f3 * f4$$

W1 = the inverse of the probability of selecting the school

W2 = the inverse of the probability of selecting the classroom within the school

- f1 = a school-level non-response adjustment factor calculated by school size category (small, medium, large)
- f2 = a class adjustment factor calculated by school
- f3 = a student-level non-response adjustment factor calculated by class
- f4 = a post-stratification adjustment factor calculated by gender and grade

The weighted results can be used to make important inferences concerning tobacco use risk behaviors of all regular public school students in grades six through 12 in the state of Illinois.

Table 1 outlines the IYTS response rates.

Table 1. 2008 IYTS Response Rates

	Student			School			Combined
	Selected	Participated	%	Selected	Participated	%	%
Middle	2,063	1,944	94.2%	27	26	96.3	90.7%
High	1,851	1,663	89.8%	26	22	84.6	76.0%
Total	3,914	3,607	92.2%	53	48	90.6	83.5%

SUDAAN was used to compute 95 percent confidence intervals, which were used to determine the differences between subgroups at the $p < 0.05$. Difference between prevalence estimates were considered statistically significant if the 95 percent confidence intervals did not overlap.

Table 2. Demographic characteristics of respondents

Category	Middle School		High School	
	n ¹²	%	n	%
Gender				
Female	953	48.6%	852	49.0%
Male	978	51.4%	800	51.0%
Race/Ethnicity				
White	834	54.7%	984	60.9%
Black	509	20.4%	204	18.2%
Hispanic	453	19.2%	364	15.9%
Other	126	5.7%	103	5.0%
Grade				
6 th	521	33.9%	---	---
7 th	629	33.6%	---	---
8 th	770	32.5%	---	---
9 th	---	---	555	28.4%
10 th	---	---	527	26.0%
11 th	---	---	361	23.6%
12 th	---	---	197	22.1%

¹² Figures represent the unweighted sample size and weighted percent

DETAILED TABLE

TABLE 1. Prevalence of current* tobacco use among middle school and high school students, by gender, race/ethnicity, grade, and tobacco product

Category	Any ^{**} Tobacco Use			Cigarette Use			Cigar Use			Pipe Use			Smokeless Tobacco Use		
	n ^{***}	%	CI	n	%	CI	n	%	CI	n	%	CI	n	%	CI
Middle School															
Gender															
Female	19,445	8.6	1.6	9,385	4.2	1.2	9,202	4.2	1.4	4,886	2.2	1.3	3,779	1.7	0.8
Male	32,055	13.4	3.4	12,232	5.2	2.3	16,940	7.2	2.2	8,217	3.5	1.2	5,324	2.3	0.9
Race/Ethnicity															
White	17,726	7.0	1.9	8,275	3.3	1.3	7,982	3.2	1.4	3,437	1.4	0.6	3,923	1.6	0.6
Black	15,667	16.6	2.7	5,876	6.4	2.6	9,313	10.2	2.6	5,631	6.2	2.4	2,412	2.7	1.5
Hispanic	15,642	17.6	5.0	6,667	7.6	3.3	8,321	9.6	3.8	3,677	4.2	1.8	2,594	3.0	1.3
Other	3,451	13.0	8.9	1,080	4.2	3.6	1,161	4.4	3.5	700	2.7	2.8	612	2.4	2.7
Grade															
6 th	12,956	8.3	2.9	4,099	2.6	1.7	6,529	4.3	2.0	3,133	2.0	1.4	2,364	1.5	0.9
7 th	17,735	11.4	2.9	8,411	5.5	2.5	7,956	5.3	1.6	5,640	3.7	1.8	1,804	1.2	0.8
8 th	21,059	13.9	4.0	8,966	6.0	2.8	11,870	8.0	3.2	4,683	3.1	1.3	4,902	3.3	1.5
Total	52,672	11.3	2.4	21,899	4.7	1.5	26,777	5.9	1.7	13,631	3.0	1.0	9,540	2.1	0.8
High School															
Gender															
Female	65,376	22.5	4.8	49,652	17.3	4.1	18,399	6.4	2.0	8,909	3.1	1.6	10,176	3.5	1.7
Male	97,679	32.3	5.5	59,823	20.3	4.2	52,568	17.8	4.4	21,670	7.2	2.2	37,256	12.5	4.3
Race/Ethnicity															
White	106,393	29.5	4.5	74,186	20.8	3.6	45,760	12.8	3.4	15,102	4.2	1.5	29,880	8.4	4.1
Black	20,407	18.9	7.4	10,521	9.9	5.6	7,917	7.5	4.4	3,567	3.4	2.4	7,752	7.3	5.3
Hispanic	28,344	30.1	6.3	18,724	20.8	5.6	13,154	14.3	3.4	9,281	9.9	3.0	7,025	7.6	3.5
Other	7,229	24.3	10.7	5,304	18.5	12.0	3,744	13.0	8.9	2,280	7.7	4.6	3,183	10.9	10.1
Grade															
9 th	27,936	16.7	6.3	13,687	8.3	2.9	11,330	6.8	2.3	6,963	4.2	2.9	7,427	4.5	2.7
10 th	37,472	24.6	4.3	21,959	14.7	4.5	15,196	10.3	3.1	8,012	5.3	2.8	10,128	6.8	2.7
11 th	49,664	35.9	6.1	33,690	25.1	5.5	21,312	15.6	5.6	7,972	5.8	3.8	15,995	11.7	3.9
12 th	46,248	35.6	11.8	38,527	29.8	10.5	21,911	17.2	7.1	7,435	5.7	3.7	13,429	10.4	7.1
Total	163,583	27.5	4.4	109,594	18.8	3.0	70,966	12.1	3.0	30,579	5.2	1.6	47,841	8.1	2.8

* Used tobacco on ≥ 1 of the 30 days preceding the survey

** Composite variable: includes use of cigarettes or cigars or smokeless tobacco or pipes or bidis or kreteks on ≥ 1 of the 30 days preceding the survey

*** n and percentages shown are weighted