

Survey of Nonfatal Workplace Injuries and Illnesses Illinois, 2007



**A publication of the
Illinois Department of Public Health
Division of Epidemiologic Studies
Springfield, Illinois
September 2009**

This project was supported by cooperative agreement number W9J88117-9P from the

U. S. Department of Labor, Bureau of Labor Statistics.

Prepared by

Jayneece Bostwick and Tiefu Shen, Illinois Department of Public Health, Division of
Epidemiologic Studies

Acknowledgments

This document would not have been possible without the cooperation of private industries and governmental agencies in Illinois. The Illinois Department of Public Health wishes to thank them for aiding in gathering data for the Survey of Occupational Injuries and Illnesses. The Department also acknowledges the work and dedication of the staff of the Occupational Disease Registry.

Suggested Citation

Bostwick J, Shen T. Survey of Nonfatal Workplace Injuries and Illnesses, Illinois, 2007. Epidemiologic Report Series 10:02. Springfield, Ill.: Illinois Department of Public Health, September 2009.

Copyright Information

All material in this report is in the public domain and may be reported or copied without permission; citation as to source, however, is appreciated.

TABLE OF CONTENTS

BACKGROUND	1
METHODS	1
HIGHLIGHTS	4
Overall.....	4
Private Industries.....	5
<i>Demographic Characteristics – Private Industry</i>	5
<i>Industries</i>	6
<i>Occupations – Private Industry</i>	7
<i>Injury Characteristics – Private Industry</i>	8
Government	9
<i>Demographic Characteristics - Government</i>	9
<i>Occupations - Government</i>	10
<i>Injury Characteristics- Government</i>	10
GENERAL COMMENTS	11
REFERENCES.....	13
TABLE 1. NUMBERS OF NONFATAL OCCUPATIONAL INJURIES AND ILLNESSES BY CASE TYPES, ILLINOIS 2007	14
TABLE 2. INCIDENCE RATES ¹ OF NONFATAL OCCUPATIONAL INJURIES AND ILLNESSES BY CASE TYPES, ILLINOIS, 2007	15
TABLE 3. INCIDENCE RATES ¹ OF NONFATAL OCCUPATIONAL INJURIES AND ILLNESSES BY INDUSTRY SECTOR AND SELECTED CASE TYPES, ILLINOIS, 2005-2007	16
TABLE 4. NUMBERS AND PERCENT DISTRIBUTION OF NON-FATAL OCCUPATIONAL INJURIES INVOLVING DAYS AWAY FROM WORK ¹ BY WORKER DEMOGRAPHIC CHARACTERISTICS, PRIVATE INDUSTRY ^{2,3,4} , ILLINOIS, 2007	18
TABLE 5. NUMBER OF NONFATAL OCCUPATIONAL INJURIES AND ILLNESSES INVOLVING DAYS AWAY FROM WORK ¹ BY SELECTED WORKER DEMOGRAPHIC CHARACTERISTICS AND MAJOR INDUSTRY SECTOR, ILLINOIS, PRIVATE INDUSTRY, 2007	19
TABLE 6. PERCENT DISTRIBUTION OF NONFATAL OCCUPATIONAL INJURIES AND ILLNESSES INVOLVING DAYS AWAY FROM WORK ¹ BY SELECTED WORKER DEMOGRAPHIC CHARACTERISTICS AND MAJOR INDUSTRY SECTOR, ILLINOIS, PRIVATE INDUSTRY, 2007.....	21
TABLE 7. PERCENT DISTRIBUTION OF NONFATAL OCCUPATIONAL INJURIES AND ILLNESSES INVOLVING DAYS AWAY FROM WORK ¹ BY SELECTED WORKER CHARACTERISTICS AND NUMBER OF DAYS AWAY FROM WORK, ILLINOIS, PRIVATE INDUSTRY, 2007	23

TABLE 8. NUMBERS AND INCIDENCE RATES ¹ OF NONFATAL OCCUPATIONAL INJURIES AND ILLNESSES BY SELECTED INDUSTRIES AND CASE TYPES, ILLINOIS, 2007	24
TABLE 9. INCIDENCE RATES ¹ OF NONFATAL OCCUPATIONAL INJURIES AND ILLNESSES BY INDUSTRY SECTOR AND EMPLOYMENT SIZE, ILLINOIS, 2007	30
TABLE 10. INCIDENCE RATES ¹ AND NUMBERS OF NONFATAL OCCUPATIONAL ILLNESSES BY INDUSTRY SECTOR AND CATEGORY OF ILLNESS, ILLINOIS, 2007	32
TABLE 11. NUMBER OF NONFATAL OCCUPATIONAL INJURIES AND ILLNESSES INVOLVING DAYS AWAY FROM WORK ¹ BY OCCUPATION, PRIVATE INDUSTRY ^{2,3,4} , ILLINOIS, 2007	34
TABLE 12. PERCENT DISTRIBUTION OF NONFATAL OCCUPATIONAL INJURIES AND ILLNESSES INVOLVING DAYS AWAY FROM WORK ¹ BY SELECTED OCCUPATION AND NUMBER OF DAYS AWAY FROM WORK, ILLINOIS, PRIVATE INDUSTRY, 2007	35
TABLE 13. NUMBER OF NONFATAL OCCUPATIONAL INJURIES AND ILLNESSES INVOLVING DAYS AWAY FROM WORK ¹ BY MAJOR OCCUPATIONAL GROUP AND MAJOR INDUSTRY SECTOR, ILLINOIS, PRIVATE INDUSTRY, 2007	36
TABLE 14. NUMBER OF NONFATAL OCCUPATIONAL INJURIES AND ILLNESSES INVOLVING DAYS AWAY FROM WORK ¹ BY CASE CHARACTERISTIC, PRIVATE INDUSTRY ^{2,3,4} , ILLINOIS, 2007	38
TABLE 15. NUMBER OF NONFATAL OCCUPATIONAL INJURIES AND ILLNESSES INVOLVING DAYS AWAY FROM WORK ¹ BY SELECTED INJURY OR ILLNESS CHARACTERISTICS AND MAJOR INDUSTRY SECTOR, ILLINOIS, PRIVATE INDUSTRY, 2007	41
TABLE 16. INCIDENCE RATES ¹ FOR NONFATAL OCCUPATIONAL INJURIES AND ILLNESSES INVOLVING DAYS AWAY FROM WORK ² PER 10,000 FULL-TIME WORKERS FOR SELECTED CHARACTERISTICS AND MAJOR INDUSTRY SECTION, 2007	44
TABLE 17. PERCENT DISTRIBUTION OF NONFATAL OCCUPATIONAL INJURIES AND ILLNESSES INVOLVING DAYS AWAY FROM WORK ¹ BY SELECTED INJURY OR ILLNESS CHARACTERISTICS AND NUMBER OF DAYS AWAY FROM WORK, ILLINOIS, PRIVATE INDUSTRY, 2007	48
TABLE 18. NUMBER OF NONFATAL OCCUPATIONAL INJURIES AND ILLNESSES INVOLVING DAYS AWAY FROM WORK ¹ BY TIME, HOURS ON THE JOB, AND DAY OF WEEK AND MAJOR INDUSTRY SECTOR, ILLINOIS, PRIVATE INDUSTRY, 2007	50
TABLE 19. PERCENT DISTRIBUTION OF NONFATAL OCCUPATIONAL INJURIES AND ILLNESSES INVOLVING DAYS AWAY FROM WORK ¹ BY TIME, HOURS ON THE JOB, AND DAY OF WEEK AND MAJOR INDUSTRY SECTOR, ILLINOIS, PRIVATE INDUSTRY, 2007	52
TABLE 20. NUMBER OF NONFATAL OCCUPATIONAL INJURIES AND ILLNESSES INVOLVING DAYS AWAY FROM WORK ¹ BY SELECTED WORKER CHARACTERISTIC, STATE AND LOCAL GOVERNMENT, ILLINOIS, 2007	54
TABLE 21. NUMBERS OF NONFATAL OCCUPATIONAL INJURIES AND ILLNESSES INVOLVING DAYS AWAY FROM WORK ¹ BY OCCUPATION, STATE AND LOCAL GOVERNMENT, ILLINOIS, 2007	55
TABLE 22. NUMBERS OF NONFATAL OCCUPATIONAL INJURIES AND ILLNESSES INVOLVING DAYS AWAY FROM WORK ¹ BY INJURY CHARACTERISTICS, STATE AND LOCAL GOVERNMENT, ILLINOIS, 2007	56

TABLE 23. NONFATAL OCCUPATIONAL INJURY AND ILLNESS INCIDENCE RATES PER 100 FULL-TIME WORKERS ¹ , PRIVATE INDUSTRY, 2007.....	60
FIGURE 1. CASES WITH DAYS AWAY FROM WORK, JOB TRANSFER, OR RESTRICTION INCIDENCE RATES INJURIES AND ILLNESSES, ILLINOIS, PRIVATE INDUSTRY AND STATE AND LOCAL GOVERNMENT, 2003-2007	62
FIGURE 2. CASES WITH DAYS AWAY FROM WORK, JOB TRANSFER, OR RESTRICTION, INCIDENCE RATES, INJURIES AND ILLNESSES, ILLINOIS, PRIVATE INDUSTRY, 2003-2006.	63
FIGURE 3. CASES WITH DAYS AWAY FROM WORK, JOB TRANSFER, OR RESTRICTION INCIDENCE RATES, INJURIES AND ILLNESSES, ILLINOIS, STATE AND LOCAL GOVERNMENTS, 2003-2007	64
FIGURE 4. DISTRIBUTION OF INJURIES AND ILLNESSES BY CATEGORY OF ILLNESS, ILLINOIS, ALL INDUSTRIES, 2007.	65
FIGURE 5. DISTRIBUTION OF INJURIES AND ILLNESSES BY CATEGORY OF ILLNESS, ILLINOIS, PRIVATE INDUSTRY, 2007.....	66
FIGURE 6. DISTRIBUTION OF INJURIES AND ILLNESSES BY CATEGORY OF ILLNESS, ILLINOIS, STATE AND LOCAL GOVERNMENT, 2007.....	67
FIGURE 7. INCIDENCE RATES PER 100 FULL-TIME WORKERS FOR TOTAL NONFATAL OCCUPATIONAL INJURIES AND ILLNESSES BY MAJOR INDUSTRY SECTOR, ILLINOIS, 2006 AND 2007	68
FIGURE 8. MAJOR INDUSTRIES WITH THE HIGHEST NONFATAL OCCUPATIONAL INJURY AND ILLNESS RATES PER 100 FULL-TIME EMPLOYEES FOR TOTAL CASES, ILLINOIS, 2007.....	69
APPENDIX.....	70

Table of Acronyms

BLS	Bureau of Labor Statistics
COC	Census Occupational Classification
IDPH	Illinois Department of Public Health
MSHA	Mine Safety and Health Administration
NAICS	North American Industry Classification System
OSHA	Occupational Safety and Health Administration
SIC	Standard Industrial Classification
SOC	Standard Occupational Classification
SOII	Survey of Occupational Injuries and Illnesses

BACKGROUND

The Illinois Department of Public Health (IDPH), Division of Epidemiologic Studies, began participating in the U. S. Department of Labor's Bureau of Labor Statistics (BLS) Survey of Occupational Injuries and Illnesses (SOII) in October 1998. Under the agreement, BLS determines the survey sample of Illinois businesses and governmental agencies, supplies the necessary questionnaire booklets and computer systems, and performs data analyses and tabulations. The Illinois Department of Public Health and BLS distribute the survey booklets, IDPH receives the completed booklets from the various companies, provides follow-up with companies to collect missing data, codes supplied information, enters the data into a BLS computer system, and corrects any errors that may have been made. Illinois-specific data, including counts and rates, have been released since 1998.

METHODS

In Illinois, the SOII collects statewide employer reports from private industry establishments and governmental agencies. The survey only collects nonfatal occupational injuries and illnesses and excludes the self-employed, farms with fewer than 11 employees, private households, and employees in federal government agencies. The U.S. Department of Labor's Mine Safety and Health Administration provides data on occupational injury and illness data for coal, metal, and nonmetal mining. The U.S. Department of Transportation's Federal Railroad Administration also

provides data on railway related injuries and illnesses to BLS to incorporate into occupational injury and illness statistics.

Private and public sector establishments are assigned to industry categories based on the *2002 North American Industry Classification System (NAICS) Manual*, as defined by the federal Office of Management and Budget. Private industry is divided into two groups. The goods-producing group consists of agriculture, forestry and fishing; mining; construction; and manufacturing. The service-producing group includes transportation and public utilities; wholesale and retail trade; finance, insurance and real estate; and services. A division between public services and administration is used for both state and local government agencies.

Entities to be surveyed are identified two years prior to their inclusion in the survey. Those entities that are regulated by the federal Occupational Safety and Health Act of 1970 are required to participate in the survey. State and local governmental agencies and private industries that are not regulated by the act are notified of their inclusion in December of the year prior to the survey. BLS selects an independent and representative sample for each state. In Illinois, this sample represents all private industries and government units (excluding federal agencies) in the state. The sample size for the survey is dependent on (1) the characteristics for which estimates are needed, (2) the industries for which estimates are desired, (3) the characteristics of the population being sampled, (4) the target reliability of the estimates and (5) the survey design employed. The detailed sampling process has been published in the Bureau of Labor Statistics' booklet titled *Occupational Injuries and Illnesses: Counts, Rates and Characteristics*, (1997).¹

BLS, in cooperation with Illinois Department of Public Health, generates estimates of injuries and illnesses based on the sampling scheme for many two-, three-, four- and five-digit private industries (the first two digits refer to the NAICS sectors that represent general categories of economic activities; the third digit reflects subsectors; the fourth digit is the industry group; the fifth digit designates the NAICS industry; and the sixth digit denotes the national industry) as defined in the 2002 edition of the *North American Industry Classification System Manual*. The Illinois' estimates are made available to the Illinois Department of Public Health on an annual basis for verification and subsequent dissemination.

The reported number, frequency, and incidence rates of workplace injuries and illnesses were based on logs kept by private employers and governmental agencies during the year. These records reflect not only the year's injury and illness experience, but also the employer's understanding of which cases are work-related under record-keeping guidelines promulgated by the Occupational Safety and Health Administration (OSHA), U.S. Department of Labor. Effective Jan. 1, 2002, OSHA revised its requirements for recording occupational injuries and illnesses. Therefore, the estimates from the 2006 survey are not directly comparable with those from years prior to 2002 due to the change from Standard Industrial Classification (SIC) system to NAICS, the change from the Bureau of the Census Occupational Classification (COC) system to the Standard Occupational Classification (SOC) system, and the changes to OSHA recordkeeping guidelines.

The 2007 survey included 6,452 companies and governmental units. Of those, 627 companies or governmental units were found to be out of business, out of the

survey's scope, a duplicate company, or the address was not found. Of the remaining 5,825 companies and governmental units, 88.81 percent responded, which provided 11,451 cases for the survey.

Incidence rates represent the number of injuries and illnesses per 100 full-time workers and were calculated as: $(N/EH) \times 200,000$ where

N = number of injuries and illnesses

EH = total hours worked by all employees during the calendar year

200,000 = base for 100 equivalent full-time workers (working 40 hours per week, 50 weeks per year)

N.B.: Throughout this report, data may not sum to the total because of rounding and data exclusion of non-classifiable responses.

HIGHLIGHTS

Overall

- A total of 193,300 total recordable cases were estimated to have occurred among all industries including state and local government and private industry.
- Of the 193,300 recordable cases, 95,500 were cases with days away from work, job transfer or restriction.
- Of the 95,500 cases with days away from work, job transfer or restriction, 56,600 were cases with days away from work, 38,900 were cases with job transfer or restriction and the remaining 97,900 cases were other recordable cases.

- The overall incidence rate for nonfatal occupational injuries and illnesses in Illinois was 4.1 per 100 full-time workers.

Private Industries

- A total of 158,100 injuries and illnesses were estimated to have occurred in private industry workplaces in Illinois during 2007.
- Of these injuries and illnesses, 47,500 were cases with days away from work, 34,200 were cases where the employee was transferred or restricted because of an injury and 76,300 were other recordable cases.
- The total recordable case rate per 100 full-time workers for injuries and illnesses in private industry was 3.8.
- The rate for cases with days away from work, job transfer or restriction was 2.0.
- The rate for cases with days away from work was 1.1; the job transfer or restriction rate was 0.8; the rate for other recordable cases was 1.8.

Demographic Characteristics – Private Industry

- Of the 47,500 injuries and illnesses involving days away from work in private industry, 32,050 were injuries to men (67.5 percent) and 15,130 were injuries to women (31.9 percent).
- Workers aged 45 to 54 experienced the largest number of injuries (n=12,120), followed by those in the 25-to 34-year-old age group (n=11,680) and 35- to 44-year-old workers (n=11,270).

- White workers accounted for 20,140 injuries (42.4 percent), while Hispanic or Latino workers had 6,410 injuries (13.5 percent) and African-American workers experienced 4,140 injuries (8.7 percent). For 16,320 injuries (34.4 percent), the race or ethnic origin was not reported.

Industries

- The industry with the largest number of recordable cases was trade, transportation and utilities with 45,400 cases.
- Manufacturing was the second largest industry with 38,500 recordable cases.
- Education and health services was the third largest industry with 29,900 recordable cases.
- Within the trade, transportation and utilities sector, the largest number of cases occurred in the retail trade with 20,300 cases (44.7 percent of trade, transportation and utilities) and wholesale trade 9,500 (20.9 percent of trade, transportation and utilities).
- Within manufacturing, the largest number of cases occurred in the manufacturing of fabricated metal products (n=8,100), machinery manufacturing (n=5,200) and food manufacturing (n=5,000) subgroups.
- Education and health services experienced the largest number of injuries in the health care and social assistance subgroup where 28,100 (94 percent) cases occurred.

- A review of rates by industry subgroups show that transportation and warehousing (6.7 per 100 workers), manufacturing (5.6 per 100 workers), health care and social assistance (5.4 per 100 workers), and mining (5.2 per 100 workers) were the industries with the highest rates.
- Within specific industry subgroups, performing arts, spectator sports, and related industries experienced 15.0 injuries per 100 workers, air transportation workers experienced 13.7 injuries per 100 workers, administration of environmental programs experience 9.4 injuries per 100 workers, and couriers and messengers experienced 9.1 injuries per 100 workers.

Occupations – Private Industry

- Service occupations (n=9,730) and transportation and material moving occupations (n=9,230) experienced the highest number of injuries and illnesses involving days away from work with or without job transfer or restriction.
- The occupation with the lowest number of injuries was farming, fishing, and forestry with 160. N.B.: Farms with fewer than 11 employees were excluded.
- Cargo and freight agents had the highest median days away from work with 51, followed by truck drivers, light or delivery services (n=40) and first-line supervisors/managers of office and administrative support workers (n=26).
- The occupation with the shortest median number of days away from work was machinists (n=1).

Injury Characteristics – Private Industry

- Length of service with the employer collected from the survey reveals that the largest number of injuries occurred to employees who had worked for an employer more than five years (n=18,520), followed by those who had worked for the employer one to five years (n=15,740).
- In private industry, 47,500 injuries and illnesses were lost workday or restricted cases; that is, they required recuperation away from work or restricted duties at work, or both.
- Of those cases, 14,770 involved 31 or more days away from work, followed by 6,830 cases that involved three to five days away from work.
- The median number of days away from work was 11.
- The most frequent nature of injury was sprains or strains (n=19,870). Bruises or contusions (n=5,730) and fractures (n=4,320) followed the all other category (n=6,020).
- The back was the part of body most frequently affected (n=10,120) followed by the shoulder (n=4,370).
- The source of injury was most frequently the floor or ground surfaces (n=9,830) followed by worker motion or position (n=7,970).
- The event or exposure that most frequently caused a nonfatal occupational injury or illness was contact with object, equipment (n=12,980) followed by overexertion (n=11,260).

- Most injuries occurred in the time period from 8:01 a.m. – noon (n=13,990).
- Workers who had been at work for two to four hours experienced the most injuries (n=10,650) followed by those at work for four to six hours (n=7,100) and those at work for six to eight hours (n=5,850).
- Injuries occurred most often on Monday (n=10,020). As would be expected, Saturday (n=3,190) and Sunday (n=2,370) were the days with the fewest injuries.

Government

The government category includes employees of both state and local governments.

- Local government employees experienced 6,900 injuries and illnesses involving days away from work.
- State government employees experienced 2,200 injuries and illnesses involving days away from work.

Demographic Characteristics - Government

- Females (n=1,160) were injured more often than males (n=1,030) in state government.
- In local government, men experienced 4,430 injuries and women experienced 2,490 injuries.
- Local (n=1,900) and state (n=870) government workers in the 45-to 54-year-old age group experienced the highest number of injuries and illnesses.
- White workers experienced more injuries and illnesses than those of other races for local government employees with 3,160 (45.7 percent) occurrences.

- For local government employees, the majority of cases (n=2,760) did not have race reported.
- State government workers experienced 6.3 injuries per 100 workers; local government experienced 6.9 injuries per 100 workers.

Occupations - Government

- For both state and local government, the occupation with the highest number of injuries was service with local government employees experiencing 4,240 injuries and state government employees experiencing 830 injuries.

Injury Characteristics- Government

- For both state (n=1,610) and local (n=4,080) governments, workers who had worked for the employer more than five years experienced the most injuries.
- Cases involving 31 or more days away from work was highest for both local (n=2,180) and state (n=660) government employees.
- The median number of days away from work for state government employees was seven; for local government employees the median number of days away from work was 10.
- The nature of injury category shows that sprains and strains were the highest type of injury with 3,260 local government and 1,280 state government workers experiencing these injuries.
- The part of body most often affected by injury was the trunk with 2,140 local government and 790 state government workers experiencing trunk injuries.
- The most common source of injury for local government workers (n=1,840) and state government workers (n=490) was floor and ground surfaces.

- The event or exposure that caused the injury for local government workers was most frequently overexertion with 1,500.
- For state government workers, fall to lower level (n=990) was the most frequent event or exposure causing injuries.
- Local government workers experienced the highest number of injuries on Thursdays (n=1,580) and the time of day most frequently associated with injuries was 8:01 a.m. – noon (n=2,040).
- State government workers experienced more nonfatal occupational injuries and illnesses on Wednesdays (n=450) and the most frequent time of day was 8:01 a.m.-noon (n=670).
- Hours worked before the injury occurred also was collected; however, for local government, 1,380 (20 percent) did not report the number of hours worked at the time of the injury.
- For those local government cases where hours at work were reported, 1,460 occurred to workers who had been at work for two to four hours.
- For state government, the highest number of injuries occurred to workers who had worked two to four hours (n=450).

GENERAL COMMENTS

Because the data are based on a sample survey, the injury and illness estimates probably differ from the figures that would be obtained if an exhaustive registry collected all cases. To determine the precision of each estimate, sampling errors must be taken into account. The 2007 incidence rate for all occupational injuries and illnesses of 4.1

per 100 full-time workers in private industry has an estimated relative standard error of 3 percent. A relative standard error was calculated for each estimate from the survey and can be requested directly from the Department's Division of Epidemiologic Studies.

Further, the survey measures the number of new work-related illnesses that are recognized, diagnosed, and reported during the year. Some conditions (e.g. long-term latent illnesses caused by exposure to carcinogens) are often difficult to relate to the workplace and are not adequately recognized and reported. These long-term latent illnesses are believed to be underestimated in the survey's illness measures. In contrast, the overwhelming majority of the reported new illnesses are those that are easier to directly relate to workplace activity (e.g. contact dermatitis or carpal tunnel syndrome).

The data also are subject to non-sampling error. The inability to obtain information about cases in the sample, mistakes in recording or coding the data, and definition difficulties are examples of non-sampling error in the survey. These types of errors could bias the estimate; however, BLS has implemented quality assurance procedures to minimize non-sampling error in the survey. Illinois data were judged to be of sufficient quality for merging to the national pool and for generating separate reports at the state level.

REFERENCES

1. Bureau of Labor Statistics [April 1997]. Occupational Injuries and Illnesses: Counts, Rates and Characteristics, 1994, Washington, D. C.: U.S. Department of Labor, Bureau of Labor Statistics, Bulletin 2485.

Table 1. Numbers of nonfatal occupational injuries and illnesses by case types, Illinois 2007

Industry	2007 average annual employment ¹	Total recordable cases	Cases with days away from work, job transfer, or restriction			Other recordable cases
			Total	Cases with days away from work ²	Cases with job transfer or restriction	
All industries including state and local government	5,781,800	193,300	95,500	56,600	38,900	97,900
PRIVATE INDUSTRY	5,059,300	158,100	81,700	47,500	34,200	76,300
State and local government	722,600	35,300	13,700	9,100	4,600	21,500
State government	124,600	7,200	3,900	2,200	1,700	3,300
Local government	598,000	28,100	9,800	6,900	2,900	18,200

¹ Employment is expressed as an annual average and is derived primarily from the BLS-State Quarterly Census of Employment and Wages.

² Days-away-from-work cases include those that result in days away from work with or without job transfer or restriction.

SOURCE: Bureau of Labor Statistics, U.S. Department of Labor, Survey of Occupational Injuries and Illnesses, in cooperation with participating state agencies

Table 2. Incidence rates¹ of nonfatal occupational injuries and illnesses by case types, Illinois, 2007

Industry	Number 2007 average annual employment ²	Incidence rate total recordable cases	Incidence rate for cases with days away from work, job transfer, or restriction			Incidence rate other recordable cases
			Total	Cases with days away from work ³	Cases with job transfer or restriction	
All industries including state and local government	5,781,800	4.1	2.0	1.2	0.8	2.1
PRIVATE INDUSTRY	5,059,300	3.8	2.0	1.1	0.8	1.8
STATE AND LOCAL GOVERNMENT	722,600	6.7	2.6	1.7	0.9	4.1
State government	124,600	6.3	3.4	1.9	1.5	2.9
Local government	598,000	6.9	2.4	1.7	0.7	4.5

¹ Incidence rates represent the number of injuries and illnesses per 100 full-time workers and were calculated as: $(N/EH) \times 200,000$ where
 N = number of injuries and illnesses
 EH = total hours worked by all employees during the calendar year
 200,000 = base for 100 equivalent full-time workers (working 40 hours per week, 50 weeks per year)

² Employment is expressed as an annual average and is derived primarily from the BLS-State Quarterly Census of Employment and Wages.

³ Days-away-from-work cases include those that result in days away from work with or without job transfer or restriction.

SOURCE: Bureau of Labor Statistics, U.S. Department of Labor, Survey of Occupational Injuries and Illnesses, in cooperation with participating state agencies

Table 3. Incidence rates¹ of nonfatal occupational injuries and illnesses by industry sector and selected case types, Illinois, 2005-2007

Industry Sector ²	Total recordable cases			Cases with days away from work, job transfer, or restriction ⁸									Other recordable cases		
				Total			Cases with days away from work ⁸			Cases with job transfer or restriction					
				2005	2006	2007	2005	2006	2007	2005	2006	2007			
All industries including state and local government	4.4	4.3	4.1	2.5	2.2	2.0	1.5	1.2	1.2	1.0	1.0	0.8	1.9	2.1	2.1
PRIVATE INDUSTRY³	4.1	4.1	3.8	2.4	2.2	2.0	1.3	1.2	1.1	1.0	1.0	0.8	1.8	2.0	1.8
GOODS PRODUCING³	6.3	5.8	5.2	3.7	3.4	3.0	1.9	1.6	1.6	1.9	1.7	1.4	2.6	2.5	2.2
Natural resources and mining^{3,4}	7.4	6.0	4.8	4.7	3.9	3.1	3.6	3.1	2.3	1.2	0.8	0.7	2.6	2.2	1.7
Agriculture, forestry, fishing and hunting ³	7.6	4.5	4.4	4.4	2.5	2.7	3.2	1.5	1.9	1.3	1.0	0.8	3.1	1.9	1.7
Mining ⁴	7.1	7.4	5.2	5.0	5.1	3.4	3.9	4.4	2.8	1.1	0.6	0.6	2.1	2.4	1.7
Construction	6.0	5.5	4.0	3.6	3.1	2.5	2.7	2.3	1.9	0.8	0.8	0.5	2.5	2.4	1.5
Manufacturing	6.3	6.0	5.6	3.7	3.4	3.2	1.5	1.3	1.4	2.2	2.1	1.8	2.6	2.5	2.4
SERVICE PROVIDING	3.5	3.6	3.4	1.9	1.8	1.7	1.1	1.0	1.0	0.8	0.8	0.6	1.5	1.8	1.7
Trade, transportation, and utilities⁵	4.9	4.6	4.4	2.9	2.6	2.5	1.8	1.5	1.6	1.1	1.1	1.0	2.0	2.0	1.8
Wholesale trade	4.0	3.6	3.3	2.4	2.1	2.0	1.3	1.1	1.1	1.1	1.0	0.9	1.6	1.5	1.2
Retail trade	4.5	4.7	4.1	2.3	2.3	2.1	1.4	1.3	1.2	0.9	1.0	0.8	2.2	2.4	2.0
Transportation and Warehousing	7.2	--	6.7	5.1	--	4.4	3.4	--	3.0	1.7	--	1.3	2.0	--	2.3
Utilities	4.7	4.3	3.9	2.5	2.7	2.2	1.6	1.6	1.3	0.9	1.1	0.9	2.2	1.6	1.7
Information	3.0	2.4	2.9	1.9	1.6	1.5	1.3	1.0	1.1	0.6	0.6	0.4	1.1	0.8	1.4
Financial activities	1.2	0.8	0.6	0.6	0.4	0.3	0.5	0.3	0.2	0.1	0.1	0.1	0.6	0.3	0.4
Professional and business services	1.6	2.1	1.9	1.0	1.1	0.9	0.5	0.5	0.6	0.5	0.6	0.2	0.5	1.1	1.1
Education and health services	5.2	5.7	5.0	2.6	2.4	2.1	1.4	1.1	1.1	1.2	1.3	1.0	2.7	3.3	2.8
Educational services	2.3	1.8	2.2	1.0	0.7	1.0	0.8	0.4	0.6	0.2	0.3	0.4	1.3	1.2	1.2
Health care and social assistance	5.7	6.3	5.4	2.8	2.6	2.3	1.5	1.2	1.2	1.4	1.5	1.1	2.9	3.7	3.1

Table 3. Incidence rates¹ of nonfatal occupational injuries and illnesses by industry sector and selected case types, Illinois, 2005-2007

Industry Sector ²	Total recordable cases			Cases with days away from work, job transfer, or restriction ⁸									Other recordable cases		
				Total			Cases with days away from work ⁸			Cases with job transfer or restriction					
	2005	2006	2007	2005	2006	2007	2005	2006	2007	2005	2006	2007	2005	2006	2007
Leisure and hospitality	2.6	3.7	3.7	1.3	1.5	1.3	0.7	0.9	0.7	0.6	0.6	0.6	1.3	2.2	2.5
Other services, except public administration	2.5	2.3	2.9	1.3	1.6	1.4	0.9	1.2	1.2	0.5	0.5	0.2	1.2	0.6	1.5
STATE AND LOCAL GOVERNMENT	6.9	5.8	6.7	3.7	2.4	2.6	3.0	1.7	1.7	0.8	0.6	0.9	3.1	3.4	4.1
State government	6.7	4.5	6.3	3.5	2.3	3.4	2.7	1.6	1.9	0.9	0.7	1.5	3.2	2.2	2.9
Local government	6.9	6.1	6.9	3.8	2.4	2.4	3.0	1.7	1.7	0.7	0.6	0.7	3.1	3.8	4.5

¹ Incidence rates represent the number of injuries and illnesses per 100 full-time workers and were calculated as: $(N/EH) \times 200,000$ where
 N = number of injuries and illnesses
 EH = total hours worked by all employees during the calendar year
 200,000 = base for 100 equivalent full-time workers (working 40 hours per week, 50 weeks per year)

² *North American Industry Classification System*, 2002 Edition

³ Excludes farms with fewer than 11 employees

⁴ Data for mining (Sector 21 in the *North American Industry Classification system* – United States, 2002) include establishments not governed by the Mine Safety and Health Administration (MSHA) rules and reporting, such as those in oil and gas extraction and related support activities. Data for mining operators in coal, metal, and nonmetal mining are provided to BLS by the Mine Safety and Health Administration, U.S. Department of Labor. Independent mining contractors are excluded from the coal, metal, and nonmetal mining industries. These data do not reflect the changes the Occupational Safety and Health Administration made to its recordkeeping requirements effective January 1, 2002; therefore estimates for these industries are not comparable to estimates in other industries.

⁵ Data for employers in railroad transportation are provided to BLS by the Federal Railroad Administration, U.S. Department of Transportation.

⁶ Incidence rate less than 0.05

⁷ Fewer than 15 cases

⁸ Days-away-from-work cases include those that result in days away from work with or without job transfer or restriction.

-- Indicates data not available

SOURCE: Bureau of Labor Statistics, U.S. Department of Labor, Survey of Occupational Injuries and Illnesses, in cooperation with participating state agencies

Table 4. Numbers and percent distribution of non-fatal occupational injuries involving days away from work¹ by worker demographic characteristics, private industry^{2,3,4}, Illinois, 2007		
Characteristic	Number	Percent
Total	47,500	100
Gender		
Male	32,050	67.5
Female	15,130	31.9
Age		
Younger than 14	--	--
14 to 15	--	--
16 to 19	1,180	2.5
20 to 24	4,230	8.9
25 to 34	11,680	24.6
35 to 44	11,270	23.7
45 to 54	12,120	25.5
55 to 64	5,750	12.1
65 and older	1,260	2.7
Race or ethnic origin		
White only	20,140	42.4
Black or African American only	4,140	8.7
Hispanic or Latino only	6,410	13.5
Asian only	310	.7
Native Hawaiian or other Pacific Islander only	70	.1
American Indian or Alaska Native only	80	.2
Hispanic or Latino and other race	--	--
Multi-race	20	.04
Not reported	16,320	34.4

¹ Days away from work include those that result in days away from work with or without job transfer or restriction.

² Excludes farms with fewer than 11 employees

³ Data for mining (Sector 21 in the *North American Industry Classification system* – United States, 2002) include establishments not governed by the Mine Safety and Health Administration (MSHA) rules and reporting, such as those in oil and gas extraction and related support activities. Data for mining operators in coal, metal, and nonmetal mining are provided to BLS by the Mine Safety and Health Administration, U.S. Department of Labor. Independent mining contractors are excluded from the coal, metal, and nonmetal mining industries. These data do not reflect the changes the Occupational Safety and Health Administration made to its recordkeeping requirements effective January 1, 2002; therefore estimates for these industries are not comparable to estimates in other industries.

⁴ Data for employers in railroad transportation are provided to BLS by the Federal Railroad Administration, U.S. Department of Transportation.

~ Indicates data that do not meet publication guidelines

NOTE: Because of rounding and data exclusion of non-classifiable responses, data may not sum to the totals. The scientifically selected probability sample used was one of many possible samples, each of which could have produced different estimates. A measure of sampling variability for each estimate is available upon request.

SOURCE: Bureau of Labor Statistics, U.S. Department of Labor, September 26, 2008

Table 5. Number of nonfatal occupational injuries and illnesses involving days away from work¹ by selected worker demographic characteristics and major industry sector, Illinois, private industry, 2007

Demographic Characteristic	Private industry ^{2,3,4}	Goods producing				Service providing							
		Total goods producing	Natural resources and mining ^{2,3}	Construction	Manufacturing	Total service providing	Trade, transportation, and utilities ⁴	Information	Financial activities	Professional and business services	Education and health services	Leisure and hospitality	Other services
Total	47,500	14,760	530	4,480	9,750	32,730	16,240	1,170	660	3,950	6,830	2,100	1,780
Gender													
Male	32,050	12,710	510	4,400	7,800	19,350	11,130	900	290	3,040	1,460	1,220	1,300
Female	15,130	2,060	30	90	1,940	13,070	4,790	270	370	910	5,360	880	480
Age													
14 to 15	--	--	--	--	--	--	--	--	--	--	--	--	--
16 to 19	1,180	240	--	50	180	940	560	40	--	30	100	200	--
20 to 24	4,230	1,120	50	210	860	3,110	1,680	80	30	350	640	260	80
25 to 34	11,680	3,060	180	1,240	1,630	8,620	3,420	240	160	1,910	1,530	680	680
35 to 44	11,270	4,300	140	1,480	2,680	6,970	3,710	300	150	670	1,410	400	340
45 to 54	12,120	3,840	120	1,130	2,600	8,280	4,540	340	160	620	1,820	370	440
55 to 64	5,750	2,040	40	370	1,640	3,710	1,860	90	130	320	1,010	160	130
65 and over	1,260	160	--	--	160	1,090	470	80	30	50	320	30	120
Race or ethnic origin													
White only	20,140	7,790	210	2,800	4,790	12,350	5,590	230	340	1,840	2,430	600	1,330
Black only	4,140	1,170	--	420	750	2,970	660	240	80	220	1,390	170	210
Hispanic or Latino only	6,410	2,760	70	420	2,270	3,650	1,310	150	50	620	710	690	110
Asian only	310	100	--	--	90	210	20	--	--	--	160	--	--
Native Hawaiian or other Pacific Islander only	70	20	--	--	20	60	40	--	--	--	--	--	--
American Indian or Alaskan Native only	80	20	--	--	--	60	50	--	--	--	--	--	--
Hispanic or Latino and other race	--	--	--	--	--	--	--	--	--	--	--	--	--
Multi-race	20	--	--	--	--	20	--	--	--	--	--	--	--
Not reported	16,320	2,900	260	820	1,820	13,420	8,550	550	180	1,260	2,130	620	130

¹ Days away from work cases include those that result in days away from work with or without job transfer or restriction.

² Excludes farms with fewer than 11 employees.

³ Data for mining (Sector 21 in the *North American Industry Classification system* – United States, 2002) include establishments not governed by the Mine Safety and Health Administration (MSHA) rules and reporting, such as those in oil and gas extraction and related support activities. Data for mining operators in coal, metal, and nonmetal mining are provided to BLS by the Mine Safety and Health Administration, U.S. Department of Labor. Independent mining contractors are excluded from the coal, metal, and nonmetal mining industries. These data do not reflect the changes the Occupational Safety and Health Administration made to its recordkeeping requirements effective January 1, 2002; therefore estimates for these industries are not comparable to estimates in other industries.

⁴ Data for employers in railroad transportation are provided to BLS by the Federal Railroad Administration, U.S. Department of Transportation.
-- Dashes indicate data that are not available

NOTE: Because of rounding and data exclusion of non-classifiable responses, data may not sum to the totals.

SOURCE: Bureau of Labor Statistics, U.S. Department of Labor, Survey of Occupational Injuries and Illnesses, in cooperation with participating state agencies

Table 6. Percent distribution of nonfatal occupational injuries and illnesses involving days away from work¹ by selected worker demographic characteristics and major industry sector, Illinois, private industry, 2007.

Demographic Characteristic	Private industry ^{2,3,4}	Goods producing				Service providing							
		Total goods producing	Natural resources and mining ^{2,3}	Construction	Manufacturing	Total service providing	Trade, transportation, and utilities ⁴	Information	Financial activities	Professional and business services	Education and health services	Leisure and hospitality	Other services
Total (47,500 cases)	100.0	100.0	100.0	100.0	100.0	100.0	100.0	100.0	100.0	100.0	100.0	100.0	100.0
Gender													
Male	67.5	86.1	96.2	98.2	80.0	59.1	68.5	76.9	43.9	77.0	21.4	58.1	73.0
Female	31.9	14.0	5.7	2.0	19.9	39.9	29.5	23.1	56.1	23.0	78.5	41.9	27.0
Age													
14 to 15	--	--	--	--	--	--	--	--	--	--	--	--	--
16 to 19	2.5	1.6	--	1.1	1.8	2.9	3.4	3.4	--	0.8	1.5	9.5	--
20 to 24	8.9	7.6	9.4	4.7	8.8	9.5	10.3	6.8	4.5	8.9	9.4	12.4	4.5
25 to 34	24.6	20.7	34.0	27.7	16.7	26.3	21.1	20.5	24.2	48.4	22.4	32.4	38.2
35 to 44	23.7	29.1	26.4	33.0	27.5	21.3	22.8	25.6	22.7	17.0	20.6	19.0	19.1
45 to 54	25.5	26.0	22.6	25.2	26.7	25.3	28.0	29.1	24.2	15.7	26.6	17.6	24.7
55 to 64	12.1	13.8	7.5	8.3	16.8	11.3	11.5	7.7	19.7	8.1	14.8	7.6	7.3
65 and older	2.7	1.1	--	--	1.6	3.3	2.9	6.8	4.5	1.3	4.7	1.4	6.7
Length of service with employer													
Less than 3 months	9.7	12.4	11.3	23.2	7.5	8.4	8.7	1.7	3.0	9.1	8.2	10.5	9.0
3 to 11 months	17.5	16.9	30.2	20.8	14.5	17.8	15.1	19.7	15.2	22.5	16.8	27.6	23.6
1 to 5 years	33.1	30.4	37.7	29.2	30.6	34.4	29.7	15.4	31.8	48.4	36.9	35.7	48.9
More than 5 years	39.0	40.2	22.6	26.8	47.5	38.4	44.6	64.1	51.5	19.7	38.1	25.7	19.1
Race or ethnic origin													
White only	42.4	52.8	39.6	62.5	49.1	37.7	34.4	19.7	51.5	46.6	35.6	28.6	74.7
Black only	8.7	7.9	--	9.4	7.7	9.1	4.1	20.5	12.1	5.6	20.4	8.1	11.8
Hispanic or Latino only	13.5	18.7	13.2	9.4	23.3	11.2	8.1	12.8	7.6	15.7	10.4	32.9	6.2
Asian only	0.7	0.7	--	--	0.9	0.6	0.1	--	--	--	2.3	--	--
Native Hawaiian or other Pacific Islander only	0.1	0.1	--	--	0.2	0.2	0.2	--	--	--	--	--	--
American Indian or Alaskan Native only	0.2	0.1	--	--	--	0.2	0.3	--	--	--	--	--	--
Hispanic or Latino and other race	--	--	--	--	--	--	--	--	--	--	--	--	--

Table 6. Percent distribution of nonfatal occupational injuries and illnesses involving days away from work¹ by selected worker demographic characteristics and major industry sector, Illinois, private industry, 2007.

Demographic Characteristic	Private industry ^{2,3,4}	Goods producing				Service providing							
		Total goods producing	Natural resources and mining ^{2,3}	Construction	Manufacturing	Total service providing	Trade, transportation, and utilities ⁴	Information	Financial activities	Professional and business services	Education and health services	Leisure and hospitality	Other services
Multi-race	--	--	--	--	--	0.1	--	--	--	--	--	--	--
Not reported	34.4	19.6	49.1	18.3	18.7	41.0	52.6	47.0	27.3	31.9	31.2	29.5	7.3

¹ Days away from work cases include those that result in days away from work with or without job transfer or restriction.

² Excludes farms with fewer than 11 employees.

³ Data for mining (Sector 21 in the *North American Industry Classification system* – United States, 2002) include establishments not governed by the Mine Safety and Health Administration (MSHA) rules and reporting, such as those in oil and gas extraction and related support activities. Data for mining operators in coal, metal, and nonmetal mining are provided to BLS by the Mine Safety and Health Administration, U.S. Department of Labor. Independent mining contractors are excluded from the coal, metal, and nonmetal mining industries. These data do not reflect the changes the Occupational Safety and Health Administration made to its recordkeeping requirements effective January 1, 2002; therefore estimates for these industries are not comparable to estimates in other industries.

⁴ Data for employers in railroad transportation are provided to BLS by the Federal Railroad Administration, U.S. Department of Transportation.

-- Dashes indicate data that are not available.

NOTE: Because of rounding and data exclusion of non-classifiable responses, data may not sum to the totals.

SOURCE: Bureau of Labor Statistics, U.S. Department of Labor, Survey of Occupational Injuries and Illnesses, in cooperation with participating state agencies

Table 7. Percent distribution of nonfatal occupational injuries and illnesses involving days away from work¹ by selected worker characteristics and number of days away from work, Illinois, private industry, 2007

Characteristic	Percent of cases involving								Median days away from work
	Total cases	1 day	2 days	3 to 5 days	6 to 10 days	11 to 20 days	21 to 30 days	31 days or more	
TOTAL (47,500 cases)	100.0	13.5	9.6	14.4	11.7	11.8	8.0	31.1	11
Gender									
Male	100.0	14.0	8.6	14.3	11.1	11.9	7.8	32.4	12
Female	100.0	12.6	11.8	14.8	12.8	11.6	8.4	27.9	9
Age									
14 to 15	--	--	--	--	--	--	--	--	--
16 to 19	100.0	9.3	11.9	14.4	30.5	8.5	11.0	14.4	7
20 to 24	100.0	23.6	9.9	18.2	14.2	12.3	4.5	17.3	5
25 to 34	100.0	16.2	13.3	16.5	10.6	12.2	6.8	24.4	7
35 to 44	100.0	11.5	7.6	14.9	11.1	10.6	7.8	36.3	14
45 to 54	100.0	12.2	8.5	11.1	9.4	12.8	9.7	36.4	16
55 to 64	100.0	9.4	8.5	13.2	13.7	11.7	7.0	36.5	14
65 and older	100.0	5.6	5.6	14.3	11.9	10.3	18.3	33.3	22
Length of service with employer									
Less than 3 months	100.0	20.5	5.7	18.3	13.7	7.8	7.4	26.6	7
3 to 11 months	100.0	17.5	12.7	16.6	10.5	10.3	8.2	24.2	7
1 to 5 years	100.0	14.2	9.3	14.6	13.0	12.8	7.3	28.8	10
More than 5 years	100.0	9.4	9.5	12.4	10.7	12.5	8.6	36.8	16
Race or ethnic origin									
White only	100.0	14.6	9.8	12.6	11.9	12.7	8.5	29.9	11
Black only	100.0	15.9	8.2	17.4	10.9	11.1	6.8	29.5	9
Hispanic or Latino only	100.0	15.0	7.5	16.8	14.0	9.2	11.1	26.4	9
Asian only	100.0	6.5	12.9	12.9	9.7	25.8	9.7	22.6	14
Native Hawaiian or other Pacific Islander only	100.0	--	28.6	28.6	--	--	--	--	2
American Indian or Alaskan Native only	100.0	25.0	--	--	--	--	--	25.0	6
Hispanic or Latino and other race	--	--	--	--	--	--	--	--	--
Multi-race	100.0	--	--	--	--	--	--	--	5

¹ Days away from work cases include those that result in days away from work with or without job transfer or restriction.

-- Dashes indicate data that are not available.

NOTE: Because of rounding and data exclusion of non-classifiable responses, data may not sum to the total.

SOURCE: Bureau of Labor Statistics, U.S. Department of Labor, Survey of Occupational Injuries and Illnesses in cooperation with participating state agencies

Table 8. Numbers and incidence rates¹ of nonfatal occupational injuries and illnesses by selected industries and case types, Illinois, 2007

Industry ²	NAICS code ³	2007 average annual employment ⁴	Total recordable cases		Cases with days away from work, job transfer, or restriction							
					Total		Cases with days away from work ⁵		Cases with job transfer or restriction		Other recordable cases	
					#	Rate	#	Rate	#	Rate		
All industries including state and local government		5,781,800	193,300	4.1	95,500	2.0	56,600	1.2	38,900	0.8	97,900	2.1
PRIVATE INDUSTRY⁶		5,059,300	158,100	3.8	81,700	2.0	47,500	1.1	34,200	0.8	76,300	1.8
GOODS PRODUCING		981,200	48,800	5.2	28,400	3.0	14,800	1.6	13,600	1.4	20,400	2.2
Natural resources and mining^{6,7}		22,600	1,100	4.8	700	3.1	500	2.3	200	0.7	400	1.7
Agriculture, forestry, fishing and hunting⁶	11	12,500	500	4.4	300	2.7	200	1.9	100	0.8	200	1.7
Crop production ⁶	111	7,000	300	4.5	200	2.4	100	1.0	100	1.4	100	2.1
Animal production ⁶	112	2,400	200	6.4	100	4.9	100	4.8	(9)	(10)	(9)	1.4
Mining^{7,8}	21	10,200	500	5.2	400	3.4	300	2.8	100	0.6	200	1.7
Oil and gas extraction	211	800	100	7.1	(9)	4.0	(9)	3.5	(9)	(10)	(9)	3.1
Construction		277,200	9,300	4.0	5,800	2.5	4,500	1.9	1,300	0.5	3,500	1.5
Construction	23	277,200	9,300	4.0	5,800	2.5	4,500	1.9	1,300	0.5	3,500	1.5
Construction of buildings	236	60,500	1,100	2.4	700	1.4	300	0.7	400	0.7	400	0.9
Heavy and civil engineering construction	237	29,500	900	3.4	500	2.1	400	1.4	200	0.6	300	1.4
Specialty trade contractors	238	187,200	7,300	4.6	4,500	2.9	3,800	2.4	800	0.5	2,700	1.7
Manufacturing		681,300	38,500	5.6	21,900	3.2	9,700	1.4	12,200	1.8	16,500	2.4
Manufacturing	31-33	681,300	38,500	5.6	21,900	3.2	9,700	1.4	12,200	1.8	16,500	2.4
Food manufacturing	311	77,200	5,000	6.3	3,400	4.3	1,000	1.2	2,400	3.1	1,600	2.0
Apparel manufacturing	315	4,700	100	1.9	(9)	0.8	(9)	0.4	--	--	(9)	1.0
Wood product manufacturing	321	9,200	600	6.9	300	4.2	300	3.1	100	1.1	200	2.7
Paper manufacturing	322	24,700	1000	3.9	700	2.8	300	1.1	400	1.7	300	1.2
Printing and related support activities	323	41,500	1,600	4.0	900	2.3	600	1.4	300	0.9	700	1.7
Chemical manufacturing	325	48,900	1,300	2.7	600	1.2	300	0.7	300	0.6	700	1.4
Plastics and rubber products manufacturing	326	45,300	2,600	5.8	1,700	3.7	700	1.6	900	2.0	900	2.1
Nonmetallic mineral product manufacturing	327	17,200	1,300	7.3	800	4.4	400	2.0	400	2.4	500	2.9
Primary metal manufacturing	331	24,500	2,300	9.0	1,300	5.1	500	2.1	800	3.0	1,000	3.9

Table 8. Numbers and incidence rates¹ of nonfatal occupational injuries and illnesses by selected industries and case types, Illinois, 2007

Industry ²	NAICS code ³	2007 average annual employment ⁴	Total recordable cases		Cases with days away from work, job transfer, or restriction						Other recordable cases	
					Total		Cases with days away from work ⁵		Cases with job transfer or restriction			
					#	Rate	#	Rate	#	Rate		
Fabricated metal product manufacturing	332	111,000	8,100	7.5	4,200	3.8	1,900	1.8	2,200	2.0	4,000	3.7
Machinery manufacturing	333	91,500	5,200	5.5	2,800	3.0	1,300	1.4	1,500	1.6	2,300	2.5
Computer and electronic product manufacturing	334	42,400	1,100	2.6	600	1.5	300	0.6	400	0.9	500	1.1
Electrical equipment, appliance, and component manufacturing	335	28,600	1,100	3.7	700	2.3	300	0.9	400	1.4	400	1.5
Transportation equipment manufacturing	336	45,800	3,600	8.1	2,000	4.4	900	2.0	1,100	2.4	1,700	3.7
Furniture and related product manufacturing	337	17,500	1,100	6.7	400	2.7	300	1.8	100	0.9	700	4.0
Miscellaneous manufacturing	339	32,000	1,100	3.3	600	1.9	300	1.0	300	1.0	500	1.4
SERVICE PROVIDING		4,078,100	109,200	3.4	53,300	1.7	32,700	1.0	20,600	0.6	55,900	1.7
Trade, transportation, and utilities⁹		1,194,800	45,400	4.4	26,200	2.5	16,200	1.6	10,000	1.0	19,100	1.8
Wholesale trade	42	311,500	9,700	3.3	6,000	2.0	3,200	1.1	2,800	0.9	3,700	1.2
Merchant wholesalers, durable goods	423	164,400	5,000	3.1	3,100	2.0	1,900	1.2	1,200	0.8	1,900	1.2
Merchant wholesalers, nondurable goods	424	110,500	3,900	3.7	2,300	2.2	1,200	1.2	1,100	1.0	1,600	1.5
Retail trade	44-45	634,700	20,300	4.1	10,200	2.1	6,100	1.2	4,100	0.8	10,100	2.0
Motor vehicle and parts dealers	441	70,700	2,700	4.0	900	1.4	800	1.2	100	0.1	1,700	2.6
Furniture and home furnishings stores	442	24,200	600	3.0	300	1.7	200	1.0	100	0.7	200	1.3
Electronics and appliance stores	443	27,600	600	2.9	300	1.7	100	0.5	200	1.1	300	1.2
Building material and garden equipment and supplies dealers	444	51,900	2,200	5.3	1,400	3.3	800	2.0	500	1.3	800	2.0
Food and beverage stores	445	117,000	4,600	4.9	1,900	2.0	1,300	1.4	600	0.6	2,700	2.8
Gasoline stations	447	26,900	800	3.7	100	0.2	⁽⁹⁾	0.1	⁽⁹⁾	0.1	800	3.5
Clothing and clothing accessories stores	448	55,200	600	1.7	100	0.2	100	0.1	⁽⁹⁾	0.1	600	1.5

Table 8. Numbers and incidence rates¹ of nonfatal occupational injuries and illnesses by selected industries and case types, Illinois, 2007

Industry ²	NAICS code ³	2007 average annual employment ⁴	Total recordable cases		Cases with days away from work, job transfer, or restriction						Other recordable cases	
					Total		Cases with days away from work ⁵		Cases with job transfer or restriction			
					#	Rate	#	Rate	#	Rate		
Sporting goods, hobby, book, and music stores	451	26,600	400	2.4	100	0.8	100	0.4	--	--	300	1.6
General merchandise stores	452	132,000	4,500	4.9	3,200	3.5	1,400	1.6	1,800	1.9	1,300	1.4
Transportation and warehousing⁹	48-49	225,500	14,500	6.7	9,500	4.4	6,600	3.0	2,900	1.3	5,000	2.3
Air transportation	481	35,500	3,500	13.7	2,700	10.5	2,400	9.3	300	1.2	800	3.2
Rail transportation ⁹	482	--	500	2.5	400	1.9	300	1.7	⁽⁹⁾	0.2	100	0.6
Truck transportation	484	71,700	3,900	5.1	2,200	2.9	1,800	2.4	400	0.5	1,700	2.2
Transit and ground passenger transportation	485	23,300	800	6.0	500	3.4	200	1.8	200	1.6	300	2.6
Scenic and sightseeing transportation	487	1,000	⁽⁹⁾	⁽¹⁰⁾	⁽⁹⁾	⁽¹⁰⁾	⁽⁹⁾	⁽¹⁰⁾	⁽⁹⁾	⁽¹⁰⁾	⁽⁹⁾	⁽¹⁰⁾
Support activities for transportation	488	30,200	1,300	4.3	800	2.7	400	1.5	400	1.2	500	1.6
Couriers and messengers	492	18,200	1,200	9.1	900	6.7	400	3.3	500	3.4	300	2.3
Utilities	22	23,100	900	3.9	500	2.2	300	1.3	200	0.9	400	1.7
Information		116,700	3,100	2.9	1,600	1.5	1,200	1.1	500	0.4	1,500	1.4
Information	51	116,700	3,100	2.9	1,600	1.5	1,200	1.1	500	0.4	1,500	1.4
Publishing industries (except Internet)	511	39,100	1,000	2.7	500	1.4	400	1.0	200	0.4	500	1.3
Telecommunications	517	40,100	1,300	3.5	800	2.1	600	1.7	200	0.4	500	1.4
Financial activities		402,600	2,400	0.6	1,000	0.3	700	0.2	300	0.1	1,400	0.4
Finance and insurance	52	316,400	1,400	0.5	400	0.1	400	0.1	--	--	1,000	0.3
Monetary authorities – central bank	521	--	⁽⁹⁾	⁽¹⁰⁾	⁽⁹⁾	⁽¹⁰⁾	⁽⁹⁾	⁽¹⁰⁾	⁽⁹⁾	⁽¹⁰⁾	⁽⁹⁾	⁽¹⁰⁾
Credit intermediation and related activities	522	150,600	700	0.5	200	0.1	200	0.1	⁽⁹⁾	⁽¹⁰⁾	500	0.4
Securities, commodity contracts, and other financial investments and related activities	523	50,400	⁽⁹⁾	0.1	⁽⁹⁾	⁽¹⁰⁾	⁽⁹⁾	⁽¹⁰⁾	⁽⁹⁾	⁽¹⁰⁾	⁽⁹⁾	0.1
Insurance carriers and related activities	524	110,400	600	0.6	200	0.2	200	0.2	⁽⁹⁾	⁽¹⁰⁾	400	0.4

Table 8. Numbers and incidence rates¹ of nonfatal occupational injuries and illnesses by selected industries and case types, Illinois, 2007

Industry ²	NAICS code ³	2007 average annual employment ⁴	Total recordable cases		Cases with days away from work, job transfer, or restriction						Other recordable cases	
					Total		Cases with days away from work ⁵		Cases with job transfer or restriction			
					#	Rate	#	Rate	#	Rate		
Real estate and rental and leasing	53	86,200	1,000	1.3	600	0.8	300	0.3	300	0.4	400	0.5
Real estate	531	57,500	500	0.9	200	0.3	100	0.2	100	0.1	--	--
Rental and leasing services	532	27,900	500	1.9	400	1.6	100	0.6	300	1.0	100	0.4
Professional and business services		871,400	12,300	1.9	5,500	0.9	3,900	0.6	1,600	0.2	6,800	1.1
Professional, scientific, and technical services	54	367,600	4,700	1.4	1,200	0.3	900	0.3	200	0.1	3,500	1.1
Professional, scientific, and technical services	541	367,600	4,700	1.4	1,200	0.3	900	0.3	200	0.1	3,500	1.1
Management of companies and enterprises	55	96,200	800	0.9	300	0.4	300	0.3	100	0.1	500	0.5
Administrative and support and waste management and remediation services	56	407,500	6,800	3.3	4,000	1.9	2,700	1.3	1,300	0.6	2,800	1.3
Administrative and support services	561	394,900	6,000	3.1	3,600	1.9	2,600	1.3	1,100	0.6	2,400	1.2
Waste management and remediation services	562	12,600	800	5.7	400	2.8	200	1.3	200	1.6	400	2.9
Education and health services		761,200	29,900	5.0	12,800	2.1	6,800	1.1	6,000	1.0	17,100	2.8
Educational services	61	117,300	1,900	2.2	800	1.0	500	0.6	300	0.4	1,000	1.2
Health care and social assistance	62	643,900	28,100	5.4	12,000	2.3	6,300	1.2	5,700	1.1	16,000	3.1
Hospitals	622	226,300	12,900	7.2	4,800	2.7	2,500	1.4	2,400	1.3	8,100	4.5
Nursing and residential care facilities	623	126,300	8,400	8.1	4,300	4.1	1,900	1.9	2,400	2.3	4,100	3.9
Leisure and hospitality		531,900	12,000	3.7	4,000	1.3	2,100	0.7	1,900	0.6	7,900	2.5
Arts, entertainment, and recreation	71	81,000	2,500	5.2	1,100	2.2	600	1.3	500	1.0	1,400	3.0
Performing arts, spectator sports, and related industries	711	14,800	1,100	15.0	300	3.9	100	0.9	200	3.0	800	11.1
Museums, historical sites, and similar institutions	712	7,300	200	4.2	100	2.6	(9)	1.0	100	1.6	100	1.6
Amusement, gambling, and recreation industries	713	59,000	1,300	3.4	700	1.9	500	1.4	200	0.5	600	1.6
Accommodation and food services	72	450,800	9,400	3.4	3,000	1.1	1,500	0.5	1,500	0.5	6,500	2.4
Accommodation	721	51,900	2,300	5.8	1,500	3.8	500	1.3	1,000	2.5	800	2.0

Table 8. Numbers and incidence rates¹ of nonfatal occupational injuries and illnesses by selected industries and case types, Illinois, 2007

Industry ²	NAICS code ³	2007 average annual employment ⁴	Total recordable cases		Cases with days away from work, job transfer, or restriction						Other recordable cases	
					Total		Cases with days away from work ⁵		Cases with job transfer or restriction			
					#	Rate	#	Rate	#	Rate		
Food services and drinking places	722	399,000	7,100	3.0	1,500	0.6	1,000	0.4	500	0.2	5,700	2.4
Other Services		199,500	4,200	2.9	2,100	1.4	1,800	1.2	300	0.2	2,100	1.5
<i>Other services, except public administration</i>	81	199,500	4,200	2.9	2,100	1.4	1,800	1.2	300	0.2	2,100	1.5
Repair and maintenance	811	57,400	2,000	4.0	1,200	2.4	1,100	2.2	100	0.2	800	1.6
Personal and laundry services	812	58,200	1,200	3.0	300	0.9	200	0.6	--	--	800	2.1
Religious, grantmaking, civic, professional, and similar organizations	813	78,900	1,000	1.8	500	0.9	400	0.7	100	0.1	500	0.9
STATE AND LOCAL GOVERNMENT		722,600	35,300	6.7	13,700	2.6	9,100	1.7	4,600	0.9	21,500	4.1
State government		124,600	7,200	6.3	3,900	3.4	2,200	1.9	1,700	1.5	3,300	2.9
<i>SERVICE PROVIDING</i>		124,600	7,200	6.3	3,900	3.4	2,200	1.9	1,700	1.5	3,300	2.9
Education and health services		65,000	4,700	7.9	2,600	4.5	1,000	1.8	1,600	2.7	2,000	3.5
<i>Educational services</i>	61	54,300	1,300	2.6	500	1.0	300	0.6	200	0.4	800	1.7
Public Administration		--	--	--	--	--	--	--	--	--	--	--
<i>Public Administration</i>	92	--	--	--	--	--	--	--	--	--	--	--
Executive, legislative, and other general government support	921	10,300	400	3.6	200	2.0	200	1.6	⁽⁹⁾	0.4	200	1.6
Justice, public order, and safety activities	922	18,700	1,200	6.9	500	2.8	400	2.4	100	0.5	700	4.1
Administration of human resource programs	923	12,400	400	2.8	200	1.2	100	1.1	⁽⁹⁾	⁽¹⁰⁾	200	1.6
Administration of economic programs	926	14,800	600	4.6	400	3.4	400	3.2	⁽⁹⁾	0.2	200	1.2
Local government		598,000	28,100	6.9	9,800	2.4	6,900	1.7	2,900	0.7	18,200	4.5
<i>SERVICE PROVIDING</i>		596,100	28,000	6.9	9,800	2.4	6,900	1.7	2,900	0.7	18,200	4.5
Trade, transportation, and utilities⁽⁹⁾		19,300	1,600	9.3	1,400	8.0	800	4.5	600	3.5	200	1.4
<i>Transportation and warehousing⁽⁹⁾</i>	48-49	15,100	1,300	9.1	1,100	8.1	600	4.3	500	3.8	100	1.0

Table 8. Numbers and incidence rates¹ of nonfatal occupational injuries and illnesses by selected industries and case types, Illinois, 2007

Industry ²	NAICS code ³	2007 average annual employment ⁴	Total recordable cases		Cases with days away from work, job transfer, or restriction						Other recordable cases	
					Total		Cases with days away from work ⁵		Cases with job transfer or restriction			
					#	Rate	#	Rate	#	Rate		
Transit and ground passenger transportation	485	14,200	1,200	8.9	1,100	8.2	600	4.4	500	3.8	100	0.7
Information		--	100	2.0	100	1.3	100	1.3	⁽⁹⁾	⁽¹⁰⁾	⁽⁹⁾	0.7
Education and health services		350,000	12,400	5.5	2,800	1.2	2,200	1.0	600	0.3	9,600	4.2
<i>Educational services</i>	61	333,500	11,300	5.3	2,200	1.1	1,800	0.8	500	0.2	9,000	4.2
<i>Health care and social assistance</i>	62	16,500	1,200	8.0	600	3.9	400	2.8	200	1.1	600	4.1
Leisure and hospitality		30,600	500	4.6	400	3.7	100	0.9	300	2.8	100	0.9
Other services		--	⁽⁹⁾	⁽¹⁰⁾	⁽⁹⁾	⁽¹⁰⁾	⁽⁹⁾	⁽¹⁰⁾	⁽⁹⁾	⁽¹⁰⁾	⁽⁹⁾	⁽¹⁰⁾
Public administration		182,000	13,200	9.4	5,100	3.6	3,700	2.6	1,300	0.9	8,200	5.8
<i>Public administration</i>	92	182,000	13,200	9.4	5,100	3.6	3,700	2.6	1,300	0.9	8,200	5.8
Executive, legislative, and other general government support	921	141,300	8,700	7.8	4,000	3.5	2,900	2.6	1,000	0.9	4,800	4.3
Administration of environmental quality programs	924	3,900	200	9.4	200	8.6	100	3.9	100	4.7	--	--

¹ Incidence rates represent the number of injuries and illnesses per 100 full-time workers and were calculated as: (N/EH) x 200,000 where

N = number of injuries and illnesses

EH = total hours worked by all employees during the calendar year

200,000 = base for 100 equivalent full-time workers (working 40 hours per week, 50 weeks per year)

² Totals include data for industries not shown separately

³ North American Industry Classification System, 2002 Edition

⁴ Employment is expressed as an annual average and is derived primarily from the BLS-State Quarterly Census of Employment and Wages.

⁵ Days away from work cases include those that result in days away from work with or without job transfer or restriction.

⁶ Excludes farms with fewer than 11 employees

⁷ Data for mining (Sector 21 in the North American Industry Classification system – United States, 2002) include establishments not governed by the Mine Safety and Health Administration (MSHA) rules and reporting, such as those in oil and gas extraction and related support activities. Data for mining operators in coal, metal, and nonmetal mining are provided to BLS by the Mine Safety and Health Administration, U.S. Department of Labor. Independent mining contractors are excluded from the coal, metal, and nonmetal mining industries. These data do not reflect the changes the Occupational Safety and Health Administration made to its recordkeeping requirements effective January 1, 2002; therefore estimates for these industries are not comparable to estimates in other industries.

⁸ Data for mining operators in this industry are provided to BLS by the Mine Safety and Health Administration, U.S. Department of Labor. Independent mining contractors are excluded. These data do not reflect the changes in the Occupational Safety and Health Administration made to its recordkeeping requirements effective January 1, 2002; therefore estimates for these industries are not comparable to estimates in other industries.

⁹ Data for employers in railroad transportation are provided to BLS by the Federal Railroad Administration, U.S. Department of Transportation.

¹⁰ Incidence rate less than 0.05

¹¹ Fewer than 50 cases

¹² Fewer than 15 cases

-- Dashes indicate data that are not available.

SOURCE: Bureau of Labor Statistics, U.S. Department of Labor, Survey of Occupational Injuries and Illnesses, in cooperation with participating state agencies

Industry Sector ²	All Establishments	Establishment employment size (workers)				
		1 to 10	11 to 49	50 to 249	250 to 999	1,000 or more
All industries including state and local government	4.1	1.2	2.8	4.9	5.3	4.8
PRIVATE INDUSTRY ³	3.8	1.2	2.6	4.9	4.4	4.5
GOODS PRODUCING³	5.2	1.6	4.9	6.2	5.1	5.2
Natural resources and mining ^{3,4}	4.8	0.4	3.8	6.1	7.8	10.3
<i>Agriculture, forestry, fishing and hunting³</i>	4.4	(6)	4.6	5.8	--	--
<i>Mining⁴</i>	5.2	1.1	2.8	6.6	7.9	10.3
<i>Construction</i>	4.0	1.1	4.5	5.5	4.9	--
<i>Manufacturing</i>	5.6	3.0	5.3	6.5	5.2	5.2
SERVICE PROVIDING	3.4	1.1	2.0	4.4	4.2	4.4
Trade, transportation, and utilities ⁵	4.4	1.0	3.4	5.3	5.1	7.1
<i>Wholesale trade</i>	3.3	--	2.8	4.9	3.3	2.2
<i>Retail trade</i>	4.1	--	3.6	4.8	6.0	4.2
<i>Transportation and warehousing⁵</i>	6.7	--	4.0	7.0	7.8	8.9
<i>Utilities</i>	3.9	--	--	6.0	0.7	5.9
Information	2.9	--	0.6	4.4	2.8	--
Financial activities	0.6	--	0.2	1.2	1.1	0.6
<i>Finance and insurance</i>	0.5	(6)	0.2	0.8	0.7	0.6
<i>Real estate and rental and leasing</i>	1.3	--	--	2.2	3.1	--
Professional and business services	1.9	--	1.1	2.1	2.1	1.6
<i>Professional, scientific, and technical services</i>	1.4	--	--	0.4	1.2	2.0
<i>Management of companies and enterprises</i>	0.9	(6)	--	1.7	0.5	0.5

Industry Sector ²	All Establishments	Establishment employment size (workers)				
		1 to 10	11 to 49	50 to 249	250 to 999	1,000 or more
<i>Administrative and support and waste management and remediation services</i>	3.3	--	2.7	4.4	3.6	2.6
Education and health services	5.0	⁽⁶⁾	1.3	6.8	6.8	5.7
<i>Educational services</i>	2.2	⁽⁶⁾	--	--	5.1	1.5
<i>Health care and social assistance</i>	5.4	⁽⁶⁾	1.3	7.3	7.0	6.7
Leisure and hospitality	3.7	--	1.8	4.7	7.4	8.6
<i>Arts, entertainment, and recreation</i>	5.2	--	--	7.1	5.0	3.9
<i>Accommodation and food services</i>	3.4	⁽⁶⁾	1.6	4.3	8.9	11.0
Other services	2.9	--	3.9	3.8	2.7	⁽⁶⁾
<i>Other services, except public administration</i>		--	--	--	--	--
STATE AND LOCAL GOVERNMENT	6.7	--	6.3	5.9	9.5	5.5
State government	6.3	⁽⁶⁾	⁽⁶⁾	3.2	14.0	3.3
Local government	6.9	--	6.5	6.0	8.2	6.8

¹ Incidence rates represent the number of injuries and illnesses per 100 full-time workers and were calculated as: $(N/EH) \times 200,000$ where

N = number of injuries and illnesses

EH = total hours worked by all employees during the calendar year

200,000 = base for 100 equivalent full-time workers (working 40 hours per week, 50 weeks per year)

² *North American Industry Classification System, 2002 Edition*

³ Excludes farms with fewer than 11 employees

⁴ Data for mining (Sector 21 in the *North American Industry Classification system* – United States, 2002) include establishments not governed by the Mine Safety and Health Administration (MSHA) rules and reporting, such as those in oil and gas extraction and related support activities. Data for mining operators in coal, metal, and nonmetal mining are provided to BLS by the Mine Safety and Health Administration, U.S. Department of Labor. Independent mining contractors are excluded from the coal, metal, and nonmetal mining industries. These data do not reflect the changes the Occupational Safety and Health Administration made to its recordkeeping requirements effective January 1, 2002; therefore estimates for these industries are not comparable to estimates in other industries.

⁵ Data for employers in railroad transportation are provided to BLS by the Federal Railroad Administration, U.S. Department of Transportation.

⁶ Incidence rate less than 0.05

⁷ Fewer than 15 cases

-- Dashes indicate data that are not available..

NOTE: Because of rounding, components may not add to totals.

SOURCE: Bureau of Labor Statistics, U.S. Department of Labor, Survey of Occupational Injuries and Illnesses, in cooperation with participating state agencies

Industry Sector ²	Total Cases	Skin disorders	Respiratory conditions	Poisonings	Hearing loss	All other illnesses	Total Cases	Skin disorders	Respiratory conditions	Poisonings	Hearing loss	All other illnesses
	Incidence rates per 10,000 full-time workers						Numbers of illnesses in thousands					
All industries including state and local government	21.5	3.0	2.3	0.6	2.1	13.5	10.1	1.4	1.1	0.3	1.0	6.3
PRIVATE INDUSTRY ³	19.3	2.6	1.3	0.7	2.3	12.4	8.0	1.1	0.6	0.3	1.0	5.1
GOODS PRODUCING³	34.5	5.2	1.4	--	8.9	18.8	3.2	0.5	0.1	--	0.8	1.8
Natural resources and mining ^{3,4}	20.4	--	(6)	(6)	(6)	9.2	(6)	--	(6)	(6)	(6)	(6)
Agriculture, forestry, fishing and hunting ³	25.3	--	(6)	(6)	(6)	(6)	(6)	--	(6)	(6)	(6)	(6)
Mining ⁴	14.8	(b)	(b)	(6)	(6)	(b)	(b)	(b)	(6)	(6)	(6)	(6)
Construction	10.8	4.7	--	(6)	(6)	5.5	0.3	0.1	--	(6)	(6)	0.1
Manufacturing	42.9	5.3	1.8	--	12.0	23.6	2.9	0.4	0.1	--	0.8	1.6
SERVICE PROVIDING	14.9	1.8	1.3	0.8	0.4	10.5	4.8	0.6	0.4	0.3	0.1	3.4
Trade, transportation, and utilities ⁵	10.9	1.4	0.8	(6)	1.2	7.6	1.1	0.1	0.1	(6)	0.1	0.8
Wholesale trade	10.2	(6)	0.7	(6)	0.9	8.5	0.3	(6)	(6)	(6)	(6)	0.3
Retail trade	8.9	2.0	--	(6)	(6)	6.4	0.4	0.1	--	(6)	(6)	0.3
Transportation and warehousing ⁵	16.1	0.8	1.8	(6)	4.1	9.4	0.3	(6)	(6)	(6)	0.1	0.2
Utilities	14.4	6.8	(6)	(6)	--	(6)	(6)	(6)	(6)	(6)	--	(6)
Information	24.7	5.4	--	--	(6)	6.7	0.3	0.1	--	--	(6)	0.1
Financial activities	2.1	(6)	(6)	(6)	(6)	1.7	0.1	(6)	(6)	(6)	(6)	0.1
Finance and insurance	2.3	(6)	(6)	(6)	(6)	2.1	0.1	(6)	(6)	(6)	(6)	0.1
Real estate and rental and leasing	(6)	(6)	(6)	(6)	(6)	(6)	(6)	(6)	(6)	(6)	(6)	(6)
Professional and business services	9.6	1.3	0.9	(6)	(6)	7.4	0.6	0.1	0.1	(6)	(6)	0.5
Professional, scientific, and technical services	4.4	--	(6)	(6)	(6)	3.4	0.1	--	(6)	(6)	(6)	0.1
Management of companies and enterprises	5.3	--	(6)	(6)	(6)	4.8	(6)	--	(6)	(6)	(6)	(6)
Administrative and support and waste management and remediation services	19.8	2.5	2.2	(6)	(6)	15.1	0.4	0.1	(6)	(6)	(6)	0.3

Industry Sector²	Total Cases	Skin disorders	Respiratory conditions	Poisonings	Hearing loss	All other illnesses	Total Cases	Skin disorders	Respiratory conditions	Poisonings	Hearing loss	All other illnesses
	Incidence rates per 10,000 full-time workers						Numbers of illnesses in thousands					
Education and health services	29.3	3.5	3.7	(6)	(6)	22.0	1.8	0.2	0.2	(6)	(6)	1.3
<i>Educational services</i>	4.8	(6)	(6)	(6)	(6)	4.2	(6)	(6)	(6)	(6)	(6)	(6)
<i>Health care and social assistance</i>	33.4	4.0	4.2	(6)	(6)	25.0	1.7	0.2	0.2	(6)	(6)	1.3
Leisure and hospitality	23.9	2.8	1.8	(6)	(6)	--	0.8	0.1	0.1	(6)	(6)	--
<i>Arts, entertainment, and recreation</i>	20.9	14.3	(6)	(6)	(6)	--	0.1	0.1	(6)	(6)	(6)	--
<i>Accommodation and food services</i>	--	0.7	2.0	--	(6)	--	--	(6)	0.1	--	(6)	--
Other services	--	(6)	(6)	--	(6)	3.7	--	(6)	(6)	--	(6)	0.1
<i>Other services, except public administration</i>	--	(6)	(6)	--	(6)	3.7	--	(6)	(6)	--	(6)	0.1
STATE AND LOCAL GOVERNMENT	39.1	6.0	10.3	(6)	(6)	22.7	2.0	0.3	0.5	(6)	(6)	1.2
State government	17.5	3.7	(6)	(6)	(6)	12.1	0.2	(6)	(6)	(6)	(6)	0.1
Local government	45.2	6.6	12.9	(6)	(6)	25.7	1.8	0.3	0.5	(6)	(6)	1.0

¹ Incidence rates represent the number of injuries and illnesses per 100 full-time workers and were calculated as: $(N/EH) \times 200,000$ where

N = number of injuries and illnesses

EH = total hours worked by all employees during the calendar year

200,000 = base for 100 equivalent full-time workers (working 40 hours per week, 50 weeks per year)

² North American Industry Classification System, 2002 Edition

³ Excludes farms with fewer than 11 employees

⁴ Data for mining (Sector 21 in the North American Industry Classification system – United States, 2002) include establishments not governed by the Mine Safety and Health Administration (MSHA) rules and reporting, such as those in oil and gas extraction and related support activities. Data for mining operators in coal, metal, and nonmetal mining are provided to BLS by the Mine Safety and Health Administration, U.S. Department of Labor. Independent mining contractors are excluded from the coal, metal, and nonmetal mining industries. These data do not reflect the changes the Occupational Safety and Health Administration made to its recordkeeping requirements effective January 1, 2002; therefore estimates for these industries are not comparable to estimates in other industries.

⁵ Data for employers in railroad transportation are provided to BLS by the Federal Railroad Administration, U.S. Department of Transportation.

⁶ Fewer than 50 cases

⁷ Fewer than 15 cases

-- Dashes Indicate data that are not available.

NOTE: Because of rounding, components may not add to totals.

SOURCE: Bureau of Labor Statistics, U.S. Department of Labor, Survey of Occupational Injuries and Illnesses, in cooperation with participating state agencies

Table 11. Number of nonfatal occupational injuries and illnesses involving days away from work¹ by occupation, private industry^{2,3,4}, Illinois, 2007.	
Occupation	Number
TOTAL	47,500
Management, business, financial	580
Professional and related	2,790
Service	9,730
Sales and related	3,470
Office and administrative support	4,830
Farming, fishing, and forestry	160
Construction and extractive	4,880
Installation, maintenance, and repair	3,270
Production	8,490
Transportation and material moving	9,230
Military specific	~

¹ Days away from work cases include those that result in days away from work with or without job transfer or restriction.

² Excludes farms with fewer than 11 employees

³ Data for mining (Sector 21 in the *North American Industry Classification system* – United States, 2002) include establishments not governed by the Mine Safety and Health Administration (MSHA) rules and reporting, such as those in oil and gas extraction and related support activities. Data for mining operators in coal, metal, and nonmetal mining are provided to BLS by the Mine Safety and Health Administration, U.S. Department of Labor. Independent mining contractors are excluded from the coal, metal, and nonmetal mining industries. These data do not reflect the changes the Occupational Safety and Health Administration made to its recordkeeping requirements effective January 1, 2002; therefore estimates for these industries are not comparable to estimates in other industries.

⁴ Data for employers in railroad transportation are provided to BLS by the Federal Railroad Administration, U.S. Department of Transportation.

~ Indicates data that do not meet publication guidelines

NOTE: Because of rounding and data exclusion of non-classifiable responses, data may not sum to the totals. The scientifically selected probability sample used was one of many possible samples, each of which could have produced different estimates. A measure of sampling variability for each estimate is available upon request.

SOURCE: Bureau of Labor Statistics, U.S. Department of Labor, Survey of Occupational Injuries and Illnesses, in cooperation with participating state agencies

Table 12. Percent distribution of nonfatal occupational injuries and illnesses involving days away from work¹ by selected occupation and number of days away from work, Illinois, private industry, 2007

Occupation	Percent of cases involving								Median days away from work
	Total cases	1 day	2 days	3 to 5 days	6 to 10 days	11 to 20 days	21 to 30 days	31 days or more	
TOTAL (47,500 cases)	100.0	13.5	9.6	14.4	11.7	11.8	8.0	31.1	11
Laborers and freight, stock, and material movers, hand	100.0	21.5	7.5	13.7	13.5	9.8	9.1	24.9	8
Truck drivers, heavy and tractor-trailer	100.0	6.9	6.5	12.6	12.2	10.3	16.4	35.5	21
Nursing aides, orderlies, and attendants	100.0	9.1	12.3	28.6	13.6	14.3	7.1	14.3	5
Janitors and cleaners, except maids and housekeeping cleaners	100.0	11.9	12.7	26.3	11.0	9.3	5.9	22.9	5
Cashiers	100.0	15.5	12.1	17.2	11.2	4.3	4.3	34.5	7
Construction laborers	100.0	11.4	3.5	13.2	7.9	11.4	6.1	46.5	21
Retail salespersons	100.0	11.5	12.5	19.2	19.2	8.7	6.7	23.1	7
Registered nurses	100.0	15.4	15.4	14.1	15.4	11.5	7.7	21.8	7
Truck drives, light or delivery services	100.0	5.1	3.8	10.3	5.1	16.7	5.1	53.8	40
Welders, cutters, solderers, and brazers	100.0	38.7	2.7	22.7	4.0	4.0	5.3	21.3	3
Flight attendants	100.0	6.8	--	9.6	30.1	8.2	--	42.5	15
Cargo and freight agents	100.0	--	--	--	--	16.7	--	81.9	51
Reservation and transportation ticket agents and travel clerks	100.0	--	14.1	14.1	14.1	18.3	18.3	22.5	14
Landscaping and groundskeeping workers	100.0	49.3	2.9	8.7	2.9	17.4	--	18.8	2
Maids and housekeeping cleaners	100.0	16.9	8.5	16.9	11.9	15.3	5.1	23.7	7
First-line supervisors/managers of retail sales workers	100.0	8.5	5.1	10.2	11.9	10.2	23.7	32.2	22
Electricians	100.0	45.8	3.4	3.4	3.4	5.1	6.8	32.2	5
Stock clerks and order fillers	100.0	12.1	17.2	10.3	12.1	19.0	8.6	22.4	10
Carpenters	100.0	7.0	3.5	12.3	17.5	14.0	8.8	33.3	13
Plumbers, pipefitters, and steamfitters	100.0	21.2	11.5	5.8	11.5	7.7	3.8	38.5	13
Machinists	100.0	60.8	3.9	15.7	--	5.9	3.9	7.8	1
First-line supervisors/managers of office and administrative support workers	100.0	4.2	8.3	8.3	10.4	8.3	31.3	27.1	26
Automotive service technicians and mechanics	100.0	6.5	10.9	17.4	10.9	6.5	--	43.5	13
Maintenance and repair workers, general	100.0	6.5	10.9	8.7	10.9	28.3	4.3	30.4	18
Inspectors, testers, sorters, samplers, and weighers	100.0	10.9	4.3	17.4	6.5	8.7	17.4	34.8	24

¹ Days-away-from-work cases include those that result in days away from work with or without job transfer or restriction.

-- Dashes indicate data that are not available.

NOTE: Because of rounding and data exclusion of non-classifiable responses, data may not sum to the totals.

SOURCE: Bureau of Labor Statistics, U.S. Department of Labor, Survey of Occupational Injuries and Illnesses in cooperation with participating state agencies

Table 13. Number of nonfatal occupational injuries and illnesses involving days away from work¹ by major occupational group and major industry sector, Illinois, private industry, 2007

Occupation	Private Industry 2, 3, 4	Goods Producing				Service Providing							
		Total goods producing	Natural resources and mining ^{2,3}	Construction	Manufacturing	Total service providing	Trade, transportation, and utilities ⁴	Information	Financial activities	Professional and business services	Education and health services	Leisure and hospitality	Other services
TOTAL	47,500	14,760	530	4,480	9,750	32,730	16,240	1,170	660	3,950	6,830	2,100	1,780
Management occupations	350	50	--	--	30	300	150	--	--	50	70	--	--
Business and financial operations occupations	230	70	--	--	70	150	--	--	40	--	80	--	--
Computer and mathematical occupations	40	--	--	--	--	30	--	--	--	--	--	--	--
Architecture and engineering occupations	220	70	--	--	60	150	40	--	--	100	--	--	--
Life, physical, and social science occupations	70	--	--	--	--	50	--	--	--	--	20	--	--
Community and social services occupations	160	--	--	--	--	160	--	--	--	--	160	--	--
Legal occupations	--	--	--	--	--	--	--	--	--	--	--	--	--
Education, training, and library occupations	360	--	--	--	--	360	--	--	--	--	360	--	--
Arts, design, entertainment, sports, and media occupations	110	--	--	--	--	110	--	40	--	--	--	60	--
Health care practitioners and technical occupations	1,810	20	--	--	20	1,790	20	--	20	40	1,540	--	180
Health care support occupations	2,460	--	--	--	--	2,460	30	--	--	--	2,410	--	--
Protective service occupations	340	--	--	--	--	340	30	--	--	220	60	20	--
Food preparation and serving related occupations	2,010	--	--	--	--	2,010	570	--	--	50	320	1,050	--
Building and grounds cleaning and maintenance occupations	3,300	270	50	50	170	3,030	350	60	70	1,460	520	450	110
Personal care and service occupations	1,610	--	--	--	--	1,610	810	--	--	--	220	60	160

Table 13. Number of nonfatal occupational injuries and illnesses involving days away from work¹ by major occupational group and major industry sector, Illinois, private industry, 2007

Occupation	Private Industry 2, 3, 4	Goods Producing				Service Providing							
		Total goods producing	Natural resources and mining ^{2,3}	Construction	Manufacturing	Total service providing	Trade, transportation, and utilities ⁴	Information	Financial activities	Professional and business services	Education and health services	Leisure and hospitality	Other services
Sales and related occupations	3,470	80	--	--	80	3,380	3,150	90	--	30	--	70	--
Office and administrative support occupations	4,830	310	--	20	290	4,510	2,620	180	330	550	740	30	80
Farming, fishing, and forestry occupations	160	160	160	--	--	--	--	--	--	--	--	--	--
Construction and extraction occupations	4,880	4,310	170	3,820	320	570	170	--	--	150	60	20	170
Installation, maintenance, and repair occupations	3,270	800	50	250	510	2,460	1,250	590	50	150	30	160	220
Production occupations	8,490	6,580	30	230	6,330	1,900	640	100	--	270	100	20	760
Transportation and material moving occupations	9,230	1,930	60	100	1,780	7,290	6,340	110	90	480	120	120	--

¹ Days away from work cases include those that result in days away from work with or without job transfer or restriction.

² Excludes farms with fewer than 11 employees

³ Data for mining (Sector 21 in the *North American Industry Classification system* – United States, 2002) include establishments not governed by the Mine Safety and Health Administration (MSHA) rules and reporting, such as those in oil and gas extraction and related support activities. Data for mining operators in coal, metal, and nonmetal mining are provided to BLS by the Mine Safety and Health Administration, U.S. Department of Labor. Independent mining contractors are excluded from the coal, metal, and nonmetal mining industries. These data do not reflect the changes the Occupational Safety and Health Administration made to its recordkeeping requirements effective January 1, 2002; therefore estimates for these industries are not comparable to estimates in other industries.

⁴ Data for employers in railroad transportation are provided to BLS by the Federal Railroad Administration, U.S. Department of Transportation.

-- Dashes indicate data that are not available.

NOTE: Because of rounding and data exclusion of non-classifiable responses, data may not sum to the totals.

SOURCE: Bureau of Labor Statistics, U.S. Department of Labor, Survey of Occupational Injuries and Illnesses, in cooperation with participating state agencies

Table 14. Number of nonfatal occupational injuries and illnesses involving days away from work¹ by case characteristic, private industry^{2,3,4}, Illinois, 2007

Case Characteristic	Number
Total	47,500
Length of service with employer	
Less than 3 months	4,590
3 months to 11 months	8,320
1 year to 5 years	15,740
More than 5 years	18,520
Number of days away from work	
Cases involving 1 day	6,400
Cases involving 2 days	4,560
Cases involving 3-5 days	6,830
Cases involving 6-10 days	5,540
Cases involving 11-20 days	5,600
Cases involving 21-30 days	3,800
Cases involving 31 or more days	14,770
<i>Median days away from work⁵</i>	11
Nature of injury, illness	
Sprains, strains	19,870
All other	6,020
Bruises, contusions	5,730
Fractures	4,320
Cuts, lacerations, punctures	4,310
Cuts, lacerations	3,240
Punctures	1,070
Soreness, Pain	3,430
Back pain	1,310
Multiple traumatic injuries	1,380
With fractures	150
With sprains	560
Carpal tunnel syndrome	1,300
Heat burns	480
Amputations	330
Chemical burns	210
Tendonitis	110

Table 14. Number of nonfatal occupational injuries and illnesses involving days away from work¹ by case characteristic, private industry^{2,3,4}, Illinois, 2007

Case Characteristic	Number
Part of body affected	
Trunk	17,190
Back	10,120
Shoulder	4,370
Upper extremities	12,150
Arm	2,520
Finger	3,980
Hand, except finger	1,940
Wrist	3,260
Lower extremities	9,430
Knee	3,590
Ankle	1,830
Foot, toe	2,030
Multiple	4,050
Head	3,260
Eye	1,490
Body systems	710
Neck	490
All other	200
Source of injury, illness	
Floor, ground surfaces	9,830
Person, injured or ill worker	8,020
Worker motion or position	7,970
All other	6,360
Containers	5,890
Parts and materials	4,950
Vehicles	3,250
Machinery	2,370
Hand tools	2,370
Person, other than injured or ill worker	2,220
Health care patient	1,680
Furniture, fixtures	1,480
Chemicals, chemical products	760

Table 14. Number of nonfatal occupational injuries and illnesses involving days away from work¹ by case characteristic, private industry^{2,3,4}, Illinois, 2007	
Case Characteristic	Number
Event or exposure	
Contact with object, equipment	12,980
Struck by object	6,220
Struck against object	3,290
Caught in object, equipment, material	2,570
Overexertion	11,260
Overexertion in lifting	7,730
Fall on same level	7,580
All other	5,140
Fall to lower level	2,560
Repetitive motion	2,480
Exposed to harmful substance	1,670
Slips, trips	1,400
Assault, violent act	1,300
By person	810
By other	490
By animal	480
Transportation accidents	1,100
Highway accidents	640
Fires, explosions	30

¹ Days away from work cases include those that result in days away from work with or without job transfer or restriction.

² Excludes farms with fewer than 11 employees

³ Data for mining (Sector 21 in the *North American Industry Classification system* – United States, 2002) include establishments not governed by the Mine Safety and Health Administration (MSHA) rules and reporting, such as those in oil and gas extraction and related support activities. Data for mining operators in coal, metal, and nonmetal mining are provided to BLS by the Mine Safety and Health Administration, U.S. Department of Labor. Independent mining contractors are excluded from the coal, metal, and nonmetal mining industries. These data do not reflect the changes the Occupational Safety and Health Administration made to its recordkeeping requirements effective January 1, 2002; therefore estimates for these industries are not comparable to estimates in other industries.

⁴ Data for employers in railroad transportation are provided to BLS by the Federal Railroad Administration, U.S. Department of Transportation.

NOTE: Because of rounding and data exclusion of non-classifiable responses, data may not sum to the totals. The scientifically selected probability sample used was one of many possible samples, each of which could have produced different estimates. A measure of sampling variability for each estimate is available upon request.

SOURCE: Bureau of Labor Statistics, U.S. Department of Labor, Survey of Occupational Injuries and Illnesses, in cooperation with participating state agencies

Table 15. Number of nonfatal occupational injuries and illnesses involving days away from work¹ by selected injury or illness characteristics and major industry sector, Illinois, private industry, 2007

Demographic Characteristic	Private industry ^{2,3, 4}	Goods producing				Service providing							
		Total goods producing	Natural resources and mining ^{2,3}	Construction	Manufacturing	Total service providing	Trade, transportation, and utilities ⁴	Information	Financial activities	Professional and business services	Education and health services	Leisure and hospitality	Other services
Total	47,500	14,760	530	4,480	9,750	32,730	16,240	1,170	660	3,950	6,830	2,100	1,780
Length of service with employer													
Less than 3 months	4,590	1,830	60	1,040	730	2,760	1,420	20	20	360	560	220	160
3 to 11 months	8,320	2,500	160	930	1,410	5,820	2,450	230	100	890	1,150	580	420
1 to 5 years	15,740	4,490	200	1,310	2,980	11,250	4,820	180	210	1,910	2,520	750	870
More than 5 years	18,520	5,940	120	1,200	4,630	12,580	7,240	750	340	780	2,600	540	340
Nature of injury, illness													
Sprains, strains	19,870	5,610	90	1,970	3,550	14,260	7,550	530	300	1,400	3,360	670	460
Bruises, contusions	5,730	1,410	50	580	780	4,330	2,300	150	130	260	1,120	270	90
Cuts, lacerations	3,240	1,220	60	220	940	2,020	930	20	--	450	150	310	160
Punctures	1,070	220	40	30	150	850	190	--	--	620	30	--	--
Fractures	4,320	1,640	80	550	1,010	2,680	1,250	100	60	290	600	210	170
Heat burns	480	170	--	70	100	310	120	30	--	--	50	80	--
Carpal tunnel syndrome	1,300	430	--	20	410	870	330	--	40	280	200	--	--
Tendonitis	110	50	--	--	50	60	20	--	--	--	20	--	--
Chemical burns	210	90	--	20	70	120	--	--	--	--	50	--	--
Amputations	330	190	--	60	130	140	130	--	--	--	--	--	--
Multiple traumatic injuries	1,380	570	--	140	420	810	280	30	--	170	170	70	80

Table 15. Number of nonfatal occupational injuries and illnesses involving days away from work¹ by selected injury or illness characteristics and major industry sector, Illinois, private industry, 2007

Demographic Characteristic	Private industry ^{2,3,4}	Goods producing				Service providing							
		Total goods producing	Natural resources and mining ^{2,3}	Construction	Manufacturing	Total service providing	Trade, transportation, and utilities ⁴	Information	Financial activities	Professional and business services	Education and health services	Leisure and hospitality	Other services
Part of body affected													
Head	3,260	880	--	280	590	2,380	980	60	20	230	340	70	670
Eye	1,490	470	--	120	340	1,020	210	20	--	20	90	20	660
Neck	490	130	--	20	90	360	220	--	40	20	60	20	--
Trunk	17,190	5,580	180	1,910	3,480	11,620	6,760	440	190	960	2,640	430	210
Shoulder	4,370	1,460	50	490	920	2,910	1,980	70	80	110	560	80	--
Back	10,120	2,870	100	1,140	1,630	7,250	4,070	280	80	680	1,730	250	160
Upper extremities	12,150	4,230	120	910	3,200	7,920	3,500	180	120	1,610	1,490	600	430
Arm	2,520	910	20	370	520	1,610	880	60	60	90	200	160	150
Wrist	3,260	900	--	100	780	2,360	820	20	50	750	620	70	--
Hand, except finger	1,940	640	--	120	510	1,300	450	40	--	320	290	120	80
Finger	3,980	1,640	70	260	1,310	2,330	1,230	50	--	330	290	250	170
Lower extremities	9,430	2,660	180	870	1,620	6,760	3,090	200	190	800	1,500	620	370
Knee	3,590	1,040	80	430	530	2,550	1,000	80	120	310	710	150	170
Ankle	1,830	580	20	250	310	1,250	640	30	40	110	310	50	80
Foot, except toe	1,430	380	30	50	300	1,050	620	30	--	60	190	100	--
Toe	600	130	--	20	100	470	240	--	--	30	110	--	70
Body systems	710	130	--	30	100	580	270	150	--	30	70	70	--
Multiple parts	4,050	1,120	20	450	640	2,940	1,330	150	90	300	680	280	100
Source of injury, illness													
Chemicals, chemical products	760	260	50	20	180	510	110	130	--	30	90	20	120
Containers	5,890	1,230	20	150	1,060	4,660	3,790	90	60	240	330	140	--
Furniture, fixtures	1,480	330	--	70	260	1,140	680	--	--	120	210	120	--
Machinery	2,370	1,150	40	170	940	1,220	770	30	20	70	160	80	80
Parts and materials	4,950	2,690	80	640	1,970	2,270	1,480	60	--	150	80	140	370
Person, injured or ill worker	8,020	3,110	40	910	2,160	4,910	2,290	270	90	770	1,120	310	50
Worker motion or position	7,970	3,110	40	910	2,160	4,860	2,260	270	90	770	1,110	310	50
Floor, ground surfaces	9,830	2,670	100	1,330	1,240	7,150	2,850	270	330	880	1,850	740	240
Tools, instruments, and equipment	2,980	1,160	50	340	770	1,820	690	120	60	520	230	120	90
Vehicles	3,250	640	30	250	360	2,610	1,840	100	50	240	210	160	--

Table 15. Number of nonfatal occupational injuries and illnesses involving days away from work¹ by selected injury or illness characteristics and major industry sector, Illinois, private industry, 2007

Demographic Characteristic	Private industry ^{2,3,4}	Goods producing				Service providing							
		Total goods producing	Natural resources and mining ^{2,3}	Construction	Manufacturing	Total service providing	Trade, transportation, and utilities ⁴	Information	Financial activities	Professional and business services	Education and health services	Leisure and hospitality	Other services
Person, other than worker	2,220	20	--	--	--	2,200	150	20	--	60	1,940	20	--
Health care patient	1,680	--	--	--	--	1,680	--	--	--	30	1,640	--	--
Event or exposure													
Contact with object, equipment	12,980	4,910	250	1,170	3,490	8,070	4,260	130	110	990	970	550	1,070
Struck by object	6,220	2,330	150	650	1,530	3,900	1,890	50	80	650	490	270	460
Struck against object	3,290	1,060	70	310	680	2,230	1,370	30	20	160	370	250	--
Caught in equipment or object	2,560	1,270	40	120	1,110	1,290	880	40	--	160	100	20	80
Fall to lower level	2,560	680	--	400	270	1,870	860	70	40	280	190	270	160
Fall on same level	7,580	2,020	80	870	1,060	5,570	2,190	220	290	610	1,650	470	150
Slips, trips	1,400	480	--	150	320	920	340	60	--	140	290	60	--
Overexertion	11,260	3,110	130	880	2,090	8,150	4,960	170	80	680	1,860	230	180
Overexertion in lifting	7,730	2,080	40	680	1,370	5,650	3,330	120	70	470	1,370	140	160
Repetitive motion	2,480	1,140	--	110	1,030	1,330	570	--	50	340	270	70	--
Exposed to harmful substance	1,670	490	--	120	370	1,170	340	180	--	70	260	170	150
Transportation accidents	1,100	140	--	70	70	960	570	90	40	110	80	60	--
Highway accident	640	100	--	60	40	530	350	40	--	100	--	--	--
Fires, explosions	30	30	--	--	30	--	--	--	--	--	--	--	--
Assault, violent act	1,300	--	--	--	--	1,290	290	30	--	420	540	--	--
By person	810	--	--	--	--	800	230	20	--	40	500	--	--
By animal	480	--	--	--	--	480	60	--	--	370	20	--	--

¹ Days away from work cases include those that result in days away from work with or without job transfer or restriction.

² Excludes farms with fewer than 11 employees

³ Data for mining (Sector 21 in the *North American Industry Classification system* – United States, 2002) include establishments not governed by the Mine Safety and Health Administration (MSHA) rules and reporting, such as those in oil and gas extraction and related support activities. Data for mining operators in coal, metal, and nonmetal mining are provided to BLS by the Mine Safety and Health Administration, U.S. Department of Labor. Independent mining contractors are excluded from the coal, metal, and nonmetal mining industries. These data do not reflect the changes the Occupational Safety and Health Administration made to its recordkeeping requirements effective January 1, 2002; therefore estimates for these industries are not comparable to estimates in other industries.

⁴ Data for employers in railroad transportation are provided to BLS by the Federal Railroad Administration, U.S. Department of Transportation.

NOTE: Dashes indicate data that are not available. Because of rounding and data exclusion of non-classifiable responses, data may not sum to the totals.

SOURCE: Bureau of Labor Statistics, U.S. Department of Labor, Survey of Occupational Injuries and Illnesses in cooperation with participating state agencies

Table 16. Incidence rates¹ for nonfatal occupational injuries and illnesses involving days away from work² per 10,000 full-time workers for selected characteristics and major industry section, 2007

Demographic Characteristic	Private industry ^{2,3,4}	Goods producing				Service providing							
		Total goods producing	Natural resources and mining ^{3,4}	Construction	Manufacturing	Total service providing	Trade, transportation, and utilities ⁵	Information	Financial activities	Professional and business services	Education and health services	Leisure and hospitality	Other services
Total (47,500 cases)	114.1	157.0	234.7	192.9	142.2	101.6	156.9	110.5	17.6	62.4	113.4	65.0	121.4
Nature of injury, illness													
Sprains, strains	47.7	59.6	39.0	84.6	51.8	44.3	72.9	49.8	8.0	22.2	55.7	20.7	31.3
Bruises, contusions	13.8	15.0	23.1	24.8	11.4	13.4	22.3	14.4	3.3	4.2	18.7	8.3	6.0
Cuts, lacerations	7.8	13.0	27.1	9.5	13.7	6.3	9.0	1.5	--	7.1	2.4	9.5	11.0
Punctures	2.6	2.4	17.1	1.5	2.2	2.6	1.9	--	--	9.7	0.6	--	--
Fractures	10.4	17.4	33.3	23.5	14.8	8.3	12.1	9.2	1.7	4.6	9.9	6.5	11.8
Heat burns	1.1	1.8	--	2.8	1.5	1.0	1.1	2.8	--	--	0.8	2.6	--
Carpal tunnel syndrome	3.1	4.6	--	0.9	5.9	2.7	3.2	--	1.1	4.5	3.3	--	--
Tendonitis	0.3	0.5	--	--	0.7	0.2	0.2	--	--	--	0.3	--	--
Chemical burns	0.5	1.0	--	0.8	1.0	0.4	--	--	--	--	0.9	--	--
Amputations	0.8	2.0	--	2.4	1.9	0.4	1.3	--	--	--	--	--	--
Multiple traumatic injuries	3.3	6.0	--	5.9	6.1	2.5	2.7	2.9	--	2.7	2.8	2.3	5.2
Part of body affected													
Head	7.8	9.3	--	12.1	8.6	7.4	9.4	5.4	0.5	3.7	5.7	2.3	45.9
Eye	3.6	4.9	--	5.3	5.0	3.2	2.0	1.9	--	0.3	1.6	0.6	44.7
Neck	1.2	1.4	--	1.1	1.4	1.1	2.1	--	1.2	0.3	1.0	0.5	--
Trunk	41.3	59.3	79.4	82.4	50.8	36.1	65.3	41.3	5.0	15.1	43.8	13.2	14.4
Shoulder	10.5	15.5	20.9	21.1	13.4	9.0	19.1	6.4	2.1	1.7	9.3	2.4	--
Back	24.3	30.5	44.9	49.2	23.7	22.5	39.3	26.0	2.2	10.8	28.7	7.8	10.7
Upper extremities	29.2	45.0	53.4	39.2	46.7	24.6	33.8	16.5	3.3	25.4	24.7	18.6	29.1
Arm	6.1	9.7	8.8	15.8	7.6	5.0	8.5	5.4	1.5	1.5	3.4	4.9	10.5
Wrist	7.8	9.5	--	4.3	11.4	7.3	7.9	2.1	1.3	11.9	10.3	2.1	--
Hand, except finger	4.7	6.8	--	5.2	7.5	4.0	4.4	4.2	--	5.0	4.8	3.8	5.2
Finger	9.6	17.5	32.8	11.3	19.1	7.2	11.9	4.8	--	5.2	4.8	7.7	11.6
Lower extremities	22.7	28.3	80.0	37.2	23.6	21.0	29.9	18.4	5.1	12.6	24.9	19.2	24.9
Knee	8.6	11.1	34.8	18.4	7.8	7.9	9.7	7.8	3.2	4.8	11.9	4.7	11.6
Ankle	4.4	6.1	8.7	10.5	4.6	3.9	6.2	2.8	1.1	1.8	5.1	1.4	5.4
Foot, except toe	3.4	4.1	14.5	2.3	4.3	3.3	6.0	3.2	--	1.0	3.2	3.3	--
Toe	1.4	1.4	--	0.9	1.5	1.5	2.3	--	--	0.4	1.8	--	4.9
Body systems	1.7	1.4	--	1.2	1.4	1.8	2.6	13.9	--	0.4	1.2	2.1	--
Multiple parts	9.7	11.9	9.6	19.4	9.4	9.1	12.9	14.6	2.3	4.7	11.3	8.7	7.1

Table 16. Incidence rates¹ for nonfatal occupational injuries and illnesses involving days away from work² per 10,000 full-time workers for selected characteristics and major industry section, 2007

Demographic Characteristic	Private industry ^{2,3,4}	Goods producing				Service providing							
		Total goods producing	Natural resources and mining ^{3,4}	Construction	Manufacturing	Total service providing	Trade, transportation, and utilities ⁵	Information	Financial activities	Professional and business services	Education and health services	Leisure and hospitality	Other services
Source of injury, illness													
Chemicals, chemical products	1.8	2.7	21.7	1.0	2.7	1.6	1.1	11.9	--	0.5	1.6	0.8	8.4
Containers	14.2	13.1	7.7	6.7	15.5	14.5	36.6	8.2	1.7	3.8	5.4	4.4	--
Furniture, fixtures	3.5	3.5	--	3.0	3.8	3.6	6.6	--	--	1.8	3.4	3.7	--
Machinery	5.7	12.2	15.4	7.4	13.7	3.8	7.5	2.9	0.6	1.1	2.7	2.6	5.6
Parts and materials	11.9	28.6	33.5	27.6	28.7	7.0	14.3	5.4	--	2.3	1.3	4.2	25.0
Person, injured or ill worker	19.3	33.1	15.6	39.3	31.6	15.2	22.1	25.5	2.5	12.2	18.6	9.6	3.7
Worker motion or position	19.2	33.1	15.6	39.3	31.6	15.1	21.8	25.5	2.5	12.2	18.4	9.5	3.7
Floor, ground surfaces	23.6	28.4	44.6	57.3	18.1	22.2	27.6	25.1	8.8	13.9	30.7	22.8	16.1
Tools, instruments and equipment	7.2	12.4	24.0	14.8	11.2	5.6	6.7	11.1	1.5	8.2	3.7	3.8	6.0
Vehicles	7.8	6.8	15.2	10.6	5.2	8.1	17.8	9.5	1.3	3.8	3.5	4.8	--
Person, other than worker	5.3	0.2	--	--	--	6.8	1.4	1.9	--	1.0	32.3	0.6	--
Health care patient	4.0	--	--	--	--	5.2	--	--	--	0.5	27.3	--	--

Table 16. Incidence rates¹ for nonfatal occupational injuries and illnesses involving days away from work² per 10,000 full-time workers for selected characteristics and major industry section, 2007

Demographic Characteristic	Private industry ^{2,3,4}	Goods producing				Service providing							
		Total goods producing	Natural resources and mining ^{3,4}	Construction	Manufacturing	Total service providing	Trade, transportation, and utilities ⁵	Information	Financial activities	Professional and business services	Education and health services	Leisure and hospitality	Other services
Event or exposure													
Contact with objects and equipment	31.2	52.2	110.9	50.2	50.9	25.1	41.1	11.9	2.9	15.6	16.0	17.1	72.9
Struck by object	15.0	24.7	65.2	27.9	22.3	12.1	18.2	5.1	2.1	10.3	8.2	8.5	31.1
Struck against object	7.9	11.3	29.8	13.4	10.0	6.9	13.2	2.5	0.6	2.5	6.1	7.8	--
Caught in object, equipment, material	6.1	13.5	15.9	5.2	16.2	4.0	8.5	4.1	--	2.5	1.6	0.7	5.4
Fall to lower level	6.1	7.3	--	17.0	4.0	5.8	8.3	6.8	1.1	4.4	3.2	8.4	10.9
Fall on same level	18.2	21.4	34.1	37.6	15.5	17.3	21.1	20.8	7.6	9.6	27.3	14.6	10.1
Slips, trips	3.4	5.1	--	6.5	4.7	2.9	3.2	5.7	--	2.3	4.9	1.8	--
Overexertion	27.1	33.1	58.8	38.1	30.5	25.3	47.9	16.3	2.0	10.7	30.9	7.2	11.9
Overexertion in lifting	18.6	22.1	16.8	29.2	19.9	17.5	32.2	11.1	2.0	7.4	22.8	4.2	10.6
Repetitive motion	6.0	12.2	--	4.6	15.1	4.1	5.5	--	1.3	5.4	4.5	2.3	--
Exposed to harmful substance	4.0	5.3	--	5.0	5.4	3.6	3.3	16.8	--	1.1	4.4	5.3	10.0
Transportation accidents	2.7	1.5	--	2.9	1.1	3.0	5.5	8.8	0.9	1.8	1.4	1.9	--
Highway accident	1.5	1.1	--	2.6	0.6	1.7	3.4	3.4	--	1.6	--	--	--
Fires, explosions	0.1	0.4	--	--	0.5	--	--	--	--	--	--	--	--
Assault, violent act	3.1	--	--	--	--	4.0	2.8	2.9	--	6.6	8.9	--	--
By person	1.9	--	--	--	--	2.5	2.2	1.9	--	0.7	8.4	--	--
By animal	1.1	--	--	--	--	1.5	0.6	--	--	5.9	0.3	--	--

¹ Incidence rates represent the number of injuries and illnesses per 100 full-time workers and were calculated as: (N/EH) x 200,000 where

N = number of injuries and illnesses

EH = total hours worked by all employees during the calendar year

200,000 = base for 100 equivalent full-time workers (working 40 hours per week, 50 weeks per year)

² North American Industry Classification System, 2002 Edition

³ Excludes farms with fewer than 11 employees

⁴ Data for mining (Sector 21 in the North American Industry Classification system – United States, 2002) include establishments not governed by the Mine Safety and Health Administration (MSHA) rules and reporting, such as those in oil and gas extraction and related support activities. Data for mining operators in coal, metal, and nonmetal mining are provided to BLS by the Mine Safety and Health Administration, U.S. Department of Labor. Independent mining contractors are excluded from the coal, metal, and nonmetal mining industries. These data do not reflect the changes the Occupational Safety and Health Administration made to its recordkeeping requirements effective January 1, 2002; therefore estimates for these industries are not comparable to estimates in other industries.

⁵ Data for employers in railroad transportation are provided to BLS by the Federal Railroad Administration, U.S. Department of Transportation.

⁶ Fewer than 50 cases

⁷ Fewer than 15 cases

-- Dashes Indicate data that are not available.

NOTE: Because of rounding, components may not add to totals.

SOURCE: Bureau of Labor Statistics, U.S. Department of Labor, Survey of Occupational Injuries and Illnesses, in cooperation with participating state agencies

Table 17. Percent distribution of nonfatal occupational injuries and illnesses involving days away from work¹ by selected injury or illness characteristics and number of days away from work, Illinois, private industry, 2007

Characteristic	Percent of cases involving								Median days away from work
	Total cases	1 day	2 days	3 to 5 days	6 to 10 days	11 to 20 days	21 to 30 days	31 days or more	
TOTAL (47,500 cases)	100.0	13.5	9.6	14.4	11.7	11.8	8.0	31.1	11
Nature of injury, illness									
Sprains, strains	100.0	8.9	9.4	17.8	11.7	10.8	7.5	33.9	12
Bruises, contusions	100.0	22.7	10.8	15.5	13.4	14.1	4.4	19.2	6
Cuts, lacerations	100.0	21.3	10.5	13.0	13.3	10.8	9.0	21.9	8
Punctures	100.0	32.7	38.3	9.3	6.5	5.6	--	6.5	2
Fractures	100.0	5.6	3.7	7.4	10.4	12.7	15.7	44.2	30
Heat burns	100.0	35.4	14.6	8.3	6.3	8.3	4.2	22.9	2
Carpal tunnel syndrome	100.0	1.5	--	1.5	5.4	25.4	16.9	47.7	26
Tendonitis	100.0	--	--	--	27.3	27.3	--	18.2	14
Chemical burns	100.0	14.3	42.9	9.5	9.5	9.5	9.5	--	2
Amputations	100.0	6.1	--	--	15.2	30.3	9.1	33.3	15
Multiple traumatic injuries	100.0	13.0	13.0	18.8	21.7	4.3	6.5	22.5	6
Part of body affected									
Head	100.0	38.3	17.5	14.7	8.9	10.7	1.8	8.0	2
Eye	100.0	51.0	23.5	13.4	6.7	2.7	--	2.0	1
Neck	100.0	16.3	10.2	12.2	16.3	12.2	4.1	28.6	8
Trunk	100.0	9.9	9.3	15.5	12.3	11.5	6.5	35.1	13
Shoulder	100.0	11.9	5.5	12.8	8.7	10.8	4.3	45.5	21
Back	100.0	9.2	12.2	17.0	14.2	10.1	6.3	31.0	9
Upper extremities	100.0	13.3	9.8	11.9	9.8	12.4	10.9	32.1	14
Arm	100.0	5.6	6.7	11.1	11.5	14.7	9.9	40.1	20
Wrist	100.0	4.9	15.3	9.5	7.1	14.1	13.5	35.3	19
Hand, except finger	100.0	27.3	9.8	9.8	11.9	5.2	2.1	34.0	6
Finger	100.0	18.6	7.5	14.6	9.8	12.3	11.8	25.4	10
Lower extremities	100.0	12.4	6.8	16.2	13.6	11.1	10.5	29.4	11
Knee	100.0	9.5	7.5	15.6	12.5	11.7	7.8	35.1	14
Ankle	100.0	13.7	4.4	17.5	16.4	11.5	9.3	27.3	10
Foot, except toe	100.0	7.7	10.5	15.4	8.4	15.4	15.4	27.3	15
Toe	100.0	20.0	11.7	6.7	11.7	8.3	31.7	10.0	9
Body systems	100.0	26.8	12.7	8.5	11.3	8.5	5.6	26.8	8
Multiple parts	100.0	9.6	9.9	14.3	11.9	14.1	5.7	34.6	14
Source of injury, illness									
Chemicals and chemical products	100.0	46.1	13.2	7.9	10.5	7.9	5.3	10.5	2
Containers	100.0	7.3	6.5	14.4	18.0	7.8	11.2	34.8	14
Furniture and fixtures	100.0	13.5	15.5	14.9	6.1	16.2	10.1	22.3	10
Machinery	100.0	10.1	10.5	14.8	8.9	12.7	10.5	32.5	16
Parts and materials	100.0	9.7	9.3	16.2	10.9	12.5	9.1	32.1	13
Person, injured or ill worker	100.0	9.0	8.5	13.5	11.3	12.5	9.7	35.5	15
Worker motion or position	100.0	8.9	8.5	13.6	11.0	12.5	9.8	35.6	16
Floors, ground surfaces	100.0	12.2	6.9	16.2	11.9	14.5	6.9	31.2	13
Tools, instruments, and equipment	100.0	27.5	9.7	13.4	11.7	9.4	4.0	24.5	5
Vehicles	100.0	9.8	7.7	10.2	13.5	11.4	4.3	42.8	15

Table 17. Percent distribution of nonfatal occupational injuries and illnesses involving days away from work¹ by selected injury or illness characteristics and number of days away from work, Illinois, private industry, 2007

Characteristic	Percent of cases involving								Median days away from work
	Total cases	1 day	2 days	3 to 5 days	6 to 10 days	11 to 20 days	21 to 30 days	31 days or more	
Person, other than worker	100.0	11.7	14.9	22.5	12.2	9.9	6.8	22.1	6
Health care patient	100.0	12.5	8.3	28.0	13.1	12.5	6.5	18.5	6
Event or exposure									
Contact with object, equipment	100.0	20.8	10.2	14.4	12.6	10.6	7.7	23.7	7
Struck by object	100.0	23.2	10.1	13.7	12.7	9.8	5.9	24.8	7
Struck against object	100.0	9.7	11.6	17.3	13.4	12.8	11.9	23.1	9
Caught in object, equipment, material	100.0	13.3	8.6	14.1	14.5	12.9	9.0	27.7	10
Fall to lower level	100.0	9.4	6.6	19.9	12.1	14.1	6.3	31.3	12
Fall to same level	100.0	14.1	7.3	13.6	10.4	14.1	6.6	33.9	14
Slips, trips	100.0	14.3	6.4	15.0	15.7	9.3	7.9	30.7	10
Overexertion	100.0	7.3	7.6	15.4	11.5	12.2	9.3	36.7	16
Overexertion in lifting	100.0	7.5	7.4	15.0	11.9	12.0	9.6	36.7	16
Repetitive motion	100.0	2.0	4.8	6.5	10.1	18.5	14.1	44.0	26
Exposed to harmful substances	100.0	32.3	17.4	11.4	14.4	8.4	4.8	10.8	2
Transportation accidents	100.0	8.2	13.6	9.1	13.6	12.7	7.3	37.3	13
Highway accident	100.0	9.4	17.2	7.8	15.6	6.3	9.4	34.4	11
Fires and explosions	100.0	--	--	--	--	--	--	--	22
Assaults and violent acts	100.0	8.5	36.2	16.2	5.4	4.6	3.1	26.2	3
By person	100.0	11.1	11.1	21.0	6.2	4.9	4.9	40.7	12
By animal	100.0	4.2	79.2	8.3	--	4.2	--	--	2

¹Days away from work cases include those that result in days away from work with or without job transfer or restriction.
 -- Dashes indicate data that are not available.

NOTE: Because of rounding and data exclusion of non-classifiable responses, data may not sum to the totals.

SOURCE: Bureau of Labor Statistics, U.S. Department of Labor, Survey of Occupational Injuries and Illnesses in cooperation with participating state agencies

Table 18. Number of nonfatal occupational injuries and illnesses involving days away from work¹ by time, hours on the job, and day of week and major industry sector, Illinois, private industry, 2007

Characteristic	Private Industry, ^{2, 3, 4}	Goods producing				Service providing							
		Total goods producing	Natural resources and mining ^{2,3}	Construction	Manufacturing	Total service providing	Trade, transportation, and utilities ⁴	Information	Financial activities	Professional and business services	Education and health services	Leisure and hospitality	Other services
TOTAL	47,500	14,760	530	4,480	9,750	32,730	16,240	1,170	660	3,950	6,830	2,100	1,780
Time of event													
12:01 a.m. to 4 a.m.	1,630	500	30	--	470	1,120	650	140	--	20	260	30	--
4:01 a.m. to 8 a.m.	5,450	2,370	40	900	1,420	3,080	1,780	50	80	200	800	140	--
8:01 a.m. to noon	13,650	3,790	120	1,360	2,320	9,860	4,540	350	240	1,190	1,960	660	930
12:01 p.m. to 4 p.m.	9,080	2,630	120	780	1,730	6,450	3,620	260	70	680	1,090	360	370
4:01 p.m. to 8 p.m.	4,670	910	50	20	840	3,760	2,170	70	110	220	870	280	--
8:01 p.m. to midnight	2,510	610	30	--	580	1,900	1,120	--	20	210	360	170	--
Not reported	10,510	3,950	140	1,410	2,390	6,560	2,360	290	150	1,410	1,490	470	400
Hours on the job before event occurred													
Before shift began	200	30	--	--	30	170	40	--	--	30	90	--	--
Less than 1 hour	4,210	1,360	--	580	780	2,840	1,430	110	110	280	770	140	--
1 hour to less than 2 hours	4,850	1,610	20	470	1,120	3,240	1,610	70	30	550	670	160	140
2 hours to less than 4 hours	10,650	2,590	40	770	1,780	8,060	4,320	200	160	580	1,530	710	560
4 hours to less than 6 hours	7,100	1,950	20	500	1,440	5,150	2,680	160	50	530	960	350	430
6 hours to less than 8 hours	5,850	1,840	40	440	1,350	4,010	2,110	100	70	430	900	180	230
8 hours to less than 10 hours	2,850	980	40	280	660	1,870	1,120	110	70	140	320	80	--
10 hours to less than 12 hours	640	160	--	30	130	480	250	120	--	--	90	--	--
12 hours to less than 16 hours	100	60	--	--	60	40	20	--	--	--	--	--	--
More than 16 hours	--	--	--	--	--	--	--	--	--	--	--	--	--
Not reported	11,050	4,170	370	1,410	2,390	6,880	2,670	290	150	1,410	1,490	470	400
Day of week													
Sunday	2,370	290	20	70	210	2,070	1,080	40	--	150	500	290	--
Monday	10,020	3,320	100	1,220	2,000	6,700	3,200	140	180	1,000	1,330	590	260
Tuesday	8,510	2,810	90	820	1,900	5,700	2,970	270	120	560	990	190	600
Wednesday	8,870	2,780	90	880	1,820	6,090	2,690	310	200	1,140	1,340	170	240
Thursday	7,590	2,660	70	850	1,750	4,930	2,570	150	110	500	1,000	390	210
Friday	6,940	2,320	110	570	1,640	4,620	2,380	210	30	430	960	170	440
Saturday	3,190	580	50	90	440	2,620	1,350	60	--	160	720	290	--

¹ Days away from work cases include those that result in days away from work with or without job transfer or restriction.

² Excludes farms with fewer than 11 employees

³ Data for mining (Sector 21 in the *North American Industry Classification system* – United States, 2002) include establishments not governed by the Mine Safety and Health Administration (MSHA) rules and reporting, such as those in oil and gas extraction and related support activities. Data for mining operators in coal, metal, and nonmetal mining are provided by BLS by the Mine Safety and Health Administration, U.S. Department of Labor. Independent mining contractors are excluded from the coal, metal, and nonmetal mining industries. These data do not reflect the changes the Occupational Safety and Health Administration made to its recordkeeping requirements effective January 1, 2002; therefore estimates for these industries are not comparable to estimates in other industries.

⁴ Data for employers in railroad transportation are provided to BLS by the Federal Railroad Administration, U.S. Department of Transportation.

-- Dashes indicate data that are not available.

NOTE: Because of rounding and data exclusion of non-classifiable responses, data may not sum to the totals.

SOURCE: Bureau of Labor Statistics, U.S. Department of Labor, Survey of Occupational Injuries and Illnesses in cooperation with participating state agencies

Table 19. Percent distribution of nonfatal occupational injuries and illnesses involving days away from work¹ by time, hours on the job, and day of week and major industry sector, Illinois, private industry, 2007

Characteristic	Private Industry, ² 3, 4	Goods producing				Service providing							
		Total goods producing	Natural resources and mining ^{2,3}	Construction	Manufacturing	Total service providing	Trade, transportation, and utilities ⁴	Information	Financial activities	Professional and business services	Education and health services	Leisure and hospitality	Other services
TOTAL (47,500 cases)	100.0	100.0	100.0	100.0	100.0	100.0	100.0	100.0	100.0	100.0	100.0	100.0	100.0
Time of event													
12:01 a.m. to 4 a.m.	3.4	3.4	5.7	---	4.8	3.4	4.0	12.0	--	0.5	3.8	1.4	--
4:01 a.m. to 8 a.m.	11.5	16.1	7.5	20.1	14.6	9.4	11.0	4.3	12.1	5.1	11.7	6.7	--
8:01 a.m. to noon	28.7	25.7	22.6	30.4	23.8	30.1	28.0	29.9	36.4	30.1	28.7	31.4	52.2
12:01 p.m. to 4 p.m.	19.1	17.8	22.6	17.4	17.7	19.7	22.3	22.2	10.6	17.2	16.0	17.1	20.8
4:01 p.m. to 8 p.m.	9.8	6.2	9.4	0.4	8.6	11.5	13.4	6.0	16.7	5.6	12.7	13.3	--
8:01 p.m. to midnight	5.3	4.1	5.7	--	5.9	5.8	6.9	--	3.0	5.3	5.3	8.1	--
Not reported	22.1	26.8	26.4	31.5	24.5	20.0	14.5	24.8	22.7	35.7	21.8	22.4	22.5
Hours on the job before event occurred													
Before shift began	0.4	0.2	--	--	0.3	0.5	0.2	--	--	0.8	1.3	--	--
Less than 1 hour	8.9	9.2	--	12.9	8.0	8.7	8.8	9.4	16.7	7.1	11.3	6.7	--
1 hour to less than 2 hours	10.2	10.9	3.8	10.5	11.5	9.9	9.9	6.0	4.5	13.9	9.8	7.6	7.9
2 hours to less than 4 hours	22.4	17.5	7.5	17.2	18.3	24.6	26.6	17.1	24.2	14.7	22.4	33.8	31.5
4 hours to less than 6 hours	14.9	13.2	3.8	11.2	14.8	15.7	16.5	13.7	7.6	13.4	14.1	16.7	24.2
6 hours to less than 8 hours	12.3	12.5	7.5	9.8	13.8	12.3	13.0	8.5	10.6	10.9	13.2	8.6	12.9
8 hours to less than 10 hours	6.0	6.6	7.5	6.3	6.8	5.7	6.9	9.4	10.6	3.5	4.7	3.8	--
10 hours to less than 12 hours	1.3	1.1	--	0.7	1.3	1.5	1.5	10.3	--	--	1.3	--	--
12 hours to less than 16 hours	0.2	0.4	--	--	0.6	0.1	0.1	--	--	--	--	--	--
More than 16 hours	--	--	--	--	--	--	--	--	--	--	--	--	--
Not reported	23.3	28.3	69.8	31.5	24.5	21.0	16.4	24.8	22.7	35.7	21.8	22.4	22.5
Day of week													
Sunday	5.0	2.0	3.8	1.6	2.2	6.3	6.7	3.4	--	3.8	7.3	13.8	--
Monday	21.1	22.5	18.9	27.2	20.5	20.5	19.7	12.0	27.3	25.3	19.5	28.1	14.6
Tuesday	17.9	19.0	17.0	18.3	19.5	17.4	18.3	23.1	18.2	14.2	14.5	9.0	33.7
Wednesday	18.7	18.8	17.0	19.6	18.7	18.6	16.6	26.5	30.3	28.9	19.6	8.1	13.5
Thursday	16.0	18.0	13.2	19.0	17.9	15.1	15.8	12.8	16.7	12.7	14.6	18.6	11.8
Friday	14.6	15.7	20.8	12.7	16.8	14.1	14.7	17.9	4.5	10.9	14.1	8.1	24.7
Saturday	6.7	3.9	9.4	2.0	4.5	8.0	8.3	5.1	--	4.1	10.5	13.8	--

¹ Days away from work cases include those that result in days away from work with or without job transfer or restriction.

² Excludes farms with fewer than 11 employees

³Data for mining (Sector 21 in the *North American Industry Classification system* – United States, 2002) include establishments not governed by the Mine Safety and Health Administration (MSHA) rules and reporting, such as those in oil and gas extraction and related support activities. Data for mining operators in coal, metal, and nonmetal mining are provided to BLS by the Mine Safety and Health Administration, U.S. Department of Labor. Independent mining contractors are excluded from the coal, metal, and nonmetal mining industries. These data do not reflect the changes the Occupational Safety and Health Administration made to its recordkeeping requirements effective January 1, 2002; therefore estimates for these industries are not comparable to estimates in other industries.

⁴Data for employers in railroad transportation are provided to BLS by the Federal Railroad Administration, U.S. Department of Transportation.

NOTE: Dashes indicate data that are not available. Because of rounding and data exclusion of non-classifiable responses, data may not sum to the totals.

SOURCE: Bureau of Labor Statistics, U.S. Department of Labor, Survey of Occupational Injuries and Illnesses in cooperation with participating state agencies

Table 20. Number of nonfatal occupational injuries and illnesses involving days away from work¹ by selected worker characteristic, state and local government, Illinois, 2007		
Characteristic	Local Government^{2,3,4}	State government^{2,3,4}
TOTAL	6,920	2,190
Gender		
Male	4,430	1,030
Female	2,490	1,160
Age		
Younger than 14	--	--
14 to 15	--	--
16 to 19	60	--
20 to 24	230	80
25 to 34	1,660	390
35 to 44	1,880	480
45 to 54	1,900	870
55 to 64	1,010	350
65 and older	190	30
Race or ethnic origin		
White	3,160	270
Black or African American	560	40
Hispanic or Latino	380	--
Asian	50	--
Native Hawaiian or other Pacific Islander	--	--
American Indian or Alaska Native	--	--
Hispanic and other	--	--
Multi-race	--	--
Not reported	2,760	1,880

¹ Days away from work cases include those that result in days away from work with or without job transfer or restriction.

² Excludes farms with fewer than 11 employees

³ Data for mining (Sector 21 in the *North American Industry Classification system* – United States, 2002) include establishments not governed by the Mine Safety and Health Administration (MSHA) rules and reporting, such as those in oil and gas extraction and related support activities. Data for mining operators in coal, metal, and nonmetal mining are provided to BLS by the Mine Safety and Health Administration, U.S. Department of Labor. Independent mining contractors are excluded from the coal, metal, and nonmetal mining industries. These data do not reflect the changes the Occupational Safety and Health Administration made to its recordkeeping requirements effective January 1, 2002; therefore estimates for these industries are not comparable to estimates in other industries.

⁴ Data for employers in railroad transportation are provided to BLS by the Federal Railroad Administration, U.S. Department of Transportation.

-- Data do not meet publication guidelines

NOTE: Because of rounding and data exclusion of non-classifiable responses, data may not sum to the totals. The scientifically selected probability sample used was one of many possible samples, each of which could have produced different estimates. A measure of sampling variability for each estimate is available upon request.

SOURCE: Bureau of Labor Statistics, U.S. Department of Labor, Survey of Occupational Injuries and Illnesses, in cooperation with participating state agencies

Table 21. Numbers of nonfatal occupational injuries and illnesses involving days away from work¹ by occupation, state and local government, Illinois, 2007		
Occupation	Local government^{2,3,4}	State government^{2,3,4}
TOTAL	6,920	2,190
Management, business, financial	80	60
Professional and related	910	670
Service	4,240	830
Sales and related	--	--
Office and administrative support	120	240
Farming, fishing, and forestry	--	--
Construction and extractive	220	270
Installation, maintenance, and repair	380	70
Production	60	20
Transportation and material moving	900	--
Military specific	--	--

¹ Days away from work cases include those that result in days away from work with or without job transfer or restriction.

² Excludes farms with fewer than 11 employees

³ Data for mining (Sector 21 in the *North American Industry Classification system* – United States, 2002) include establishments not governed by the Mine Safety and Health Administration (MSHA) rules and reporting, such as those in oil and gas extraction and related support activities. Data for mining operators in coal, metal, and nonmetal mining are provided to BLS by the Mine Safety and Health Administration, U.S. Department of Labor. Independent mining contractors are excluded from the coal, metal, and nonmetal mining industries. These data do not reflect the changes the Occupational Safety and Health Administration made to its recordkeeping requirements effective January 1, 2002; therefore estimates for these industries are not comparable to estimates in other industries.

⁴ Data for employers in railroad transportation are provided to BLS by the Federal Railroad Administration, U.S. Department of Transportation.

-- Data do not meet publication guidelines

NOTE: Because of rounding and data exclusion of nonclassifiable responses, data may not sum to the totals. The scientifically selected probability sample used was one of many possible samples, each of which could have produced different estimates. A measure of sampling variability for each estimate is available upon request.

SOURCE: Bureau of Labor Statistics, U.S. Department of Labor, Survey of Occupational Injuries and Illnesses, in cooperation with participating state agencies

Table 22. Numbers of nonfatal occupational injuries and illnesses involving days away from work¹ by injury characteristics, state and local government, Illinois, 2007

Characteristic	Local government^{2,3,4}	State government^{2,3,4}
TOTAL	6,920	2,190
Length of service with employer		
Less than 3 months	230	40
3 months to 11 months	320	60
1 year to 5 years	2,290	480
More than 5 years	4,080	1,610
Number of days away from work		
Cases involving 1 day	900	330
Cases involving 2 days	770	200
Cases involving 3-5 days	1,100	490
Cases involving 6-10 days	750	250
Cases involving 11-20 days	840	180
Cases involving 21-30 days	380	70
Cases involving 31 or more days	2,180	660
<i>Median days away from work⁵</i>	<i>10</i>	<i>7</i>
Nature of injury, illness		
Sprains, strains	3,260	1,280
Fractures	620	120
Cuts lacerations, punctures	200	70
Cuts, lacerations	150	40
Punctures	40	20
Bruises, contusions	1,180	390
Heat burns	50	20
Chemical burns	--	--
Amputations	--	--
Carpal tunnel syndrome	60	120
Tendonitis	50	--
Multiple traumatic injuries	80	--
With fractures	--	--
With sprains	20	--
Soreness, Pain	580	50
Back pain	220	20
All other	840	140

Table 22. Numbers of nonfatal occupational injuries and illnesses involving days away from work¹ by injury characteristics, state and local government, Illinois, 2007

Characteristic	Local government^{2,3,4}	State government^{2,3,4}
TOTAL	6,920	2,190
Part of body affected		
Head	290	180
Eye	40	40
Neck	110	120
Trunk	2,140	790
Back	1,360	480
Shoulder	480	220
Upper extremities	960	560
Arm	240	150
Finger	220	150
Hand, except finger	150	90
Wrist	340	150
Lower extremities	2,050	380
Knee	1,010	190
Ankle	520	70
Foot, toe	360	60
Body systems	130	30
Multiple	1,230	120
All other	30	--
Source of injury, illness		
Chemicals, chemical products	30	--
Containers	220	140
Furniture, fixtures	170	60
Machinery	140	50
Parts and materials	280	80
Person, injured or ill worker	1,520	350
Worker motion or position	1,500	340
Floor, ground surfaces	1,820	490
Handtools	130	60
Vehicles	890	130
Person, other than injured or ill worker	1,110	530
Health care patient	430	450
All other	620	300

Table 22. Numbers of nonfatal occupational injuries and illnesses involving days away from work¹ by injury characteristics, state and local government, Illinois, 2007

Characteristic	Local government ^{2,3,4}	State government ^{2,3,4}
TOTAL	6,920	2,190
Event or exposure		
Contact with object, equipment	1,200	300
Struck by object	490	190
Struck against object	470	90
Caught in object, equipment, material	220	20
Fall to lower level	410	90
Fall on same level	1,310	410
Slips, trips	430	80
Overexertion	1,500	510
Overexertion in lifting	880	300
Repetitive motion	70	160
Exposed to harmful substance	170	50
Transportation accidents	350	80
Highway Accident	200	60
Fire, explosions	--	--
Assault, violent act	410	370
By person	340	350
By other	60	20
By animal	40	20
All other	1,070	140
Day of Week		
Sunday	310	170
Monday	1,020	390
Tuesday	1,330	420
Wednesday	1,480	450
Thursday	1,580	420
Friday	820	240
Saturday	380	90
Time of Day		
12:01 a.m. to 4 a.m.	320	40
4:01 a.m. – 8 a.m.	800	320
8:01 a.m. – noon	2,040	670
12:01 p.m. – 4 p.m.	1,520	510
4:01 p.m. – 8 p.m.	680	280
8:01 p.m. – midnight	170	190
Not reported	1,380	180

Table 22. Numbers of nonfatal occupational injuries and illnesses involving days away from work¹ by injury characteristics, state and local government, Illinois, 2007		
Characteristic	Local government^{2,3,4}	State government^{2,3,4}
TOTAL	6,920	2,190
Hours Worked		
Occurred before shift began	90	--
Less than 1 hour	570	360
1 – 2 hours	650	320
2 – 4 hours	1,460	450
4 – 6 hours	1,010	330
6 – 8 hours	1,010	460
8 – 10 hours	550	60
10 – 12 hours	140	30
12 – 16 hours	40	--
More than 16 hours	--	--
Not reported	1,380	180

¹ Days away from work cases include those that result in days away from work with or without job transfer or restriction.

² Excludes farms with fewer than 11 employees

³ Data for mining (Sector 21 in the *North American Industry Classification system* – United States, 2002) include establishments not governed by the Mine Safety and Health Administration (MSHA) rules and reporting, such as those in oil and gas extraction and related support activities. Data for mining operators in coal, metal, and nonmetal mining are provided to BLS by the Mine Safety and Health Administration, U.S. Department of Labor. Independent mining contractors are excluded from the coal, metal, and nonmetal mining industries. These data do not reflect the changes the Occupational Safety and Health Administration made to its recordkeeping requirements effective January 1, 2002; therefore estimates for these industries are not comparable to estimates in other industries.

⁴ Data for employers in railroad transportation are provided to BLS by the Federal Railroad Administration, U.S. Department of Transportation.

⁵ Median days away from work are the measure used to summarize the varying lengths of absences from work among the cases with days away from work. Half the cases involved more days and half involved less days than a specified median. Median days away from work are represented in actual values.

-- Dashes indicate data that do not meet publication guidelines.

NOTE: Because of rounding and data exclusion of non-classifiable responses, data may not sum to the totals. The scientifically selected probability sample used was one of many possible samples, each of which could have produced different estimates. A measure of sampling variability for each estimate is available upon request.

SOURCE: Bureau of Labor Statistics, U.S. Department of Labor, Survey of Occupational Injuries and Illnesses, in cooperation with participating state agencies

Table 23. Nonfatal occupational injury and illness incidence rates per 100 full-time workers¹, private industry, 2007

State	Total recordable cases	Cases with days away from work, job transfer, or restriction			Other recordable cases
		Total	Cases with days away from work ²	Cases with job transfer or restriction	
Private Industry	4.2	2.1	1.2	0.9	2.1
Alabama	4.5	2.2	1.1	1.0	2.3
Alaska	5.5	2.7	2.0	0.7	2.8
Arizona	4.4	2.2	1.3	0.9	2.2
Arkansas	3.9	1.8	0.9	0.9	2.1
California	4.4	2.5	1.2	1.3	1.9
Connecticut	4.8	2.6	1.6	1.0	2.3
Delaware	3.4	1.8	1.3	0.6	1.6
District of Columbia	1.9	0.9	0.8	0.2	1.0
Florida	3.9	1.9	1.0	0.9	2.0
Georgia	3.5	1.7	0.9	0.8	1.8
Hawaii	4.6	3.0	2.6	0.4	1.6
Illinois	3.8	2.0	1.1	0.8	1.8
Indiana	5.1	2.5	1.1	1.3	2.6
Iowa	5.5	2.8	1.3	1.4	2.7
Kansas	5.1	2.4	1.1	1.3	2.8
Kentucky	5.2	2.7	1.4	1.3	2.5
Louisiana	2.9	1.5	1.0	0.5	1.4
Maine	6.4	3.6	1.6	1.9	2.9
Maryland	3.7	1.9	1.3	0.5	1.8
Massachusetts	4.0	2.1	1.6	0.5	1.9
Michigan	4.9	2.3	1.1	1.2	2.5
Minnesota	4.7	2.3	1.3	1.0	2.4
Missouri	4.6	2.0	1.0	1.0	2.5
Montana	6.3	2.5	1.8	0.7	3.9
Nebraska	5.0	2.2	1.3	0.9	2.7
Nevada	4.8	2.5	1.2	1.4	2.3
New Jersey	3.5	2.0	1.4	0.6	1.5
New Mexico	4.6	2.3	1.5	0.8	2.3
New York	3.1	1.6	1.4	0.2	1.5
North Carolina	3.7	1.9	1.0	0.9	1.8
Oklahoma	4.5	2.4	1.3	1.1	2.1
Oregon	5.1	2.8	1.7	1.1	2.3
Puerto Rico	4.1	3.0	2.9	0.1	1.1
Rhode Island	5.1	2.5	1.9	0.6	2.6
South Carolina	3.6	1.8	1.1	0.8	1.8
Tennessee	4.5	2.2	1.0	1.1	2.3
Texas	3.4	1.9	0.9	1.0	1.5
Utah	5.0	2.1	1.0	1.1	2.8
Vermont	5.9	2.8	1.9	1.0	3.1
Virginia	3.2	1.6	1.0	0.6	1.6
Virgin Islands	1.8	0.9	0.9	--	0.9
Washington	6.1	2.9	2.0	0.9	3.1
West Virginia	5.2	2.7	2.3	0.4	2.5
Wisconsin	5.3	2.7	1.4	1.2	2.6
Wyoming	4.6	2.3	1.8	0.5	2.3
Guam	4.2	2.2	1.9	0.3	1.9

¹ Incidence rates represent the number of injuries and illnesses per 100 full-time workers and were calculated as (N/EH) x 200,000 where

N = number of injuries and illnesses

EH = total hours worked by all employees during the calendar year

200,000 = base for 100 equivalent full-time workers (working 40 hours per week, 50 weeks per year)

² Days away from work cases include those that result in days away from work with or without job transfer or restriction.

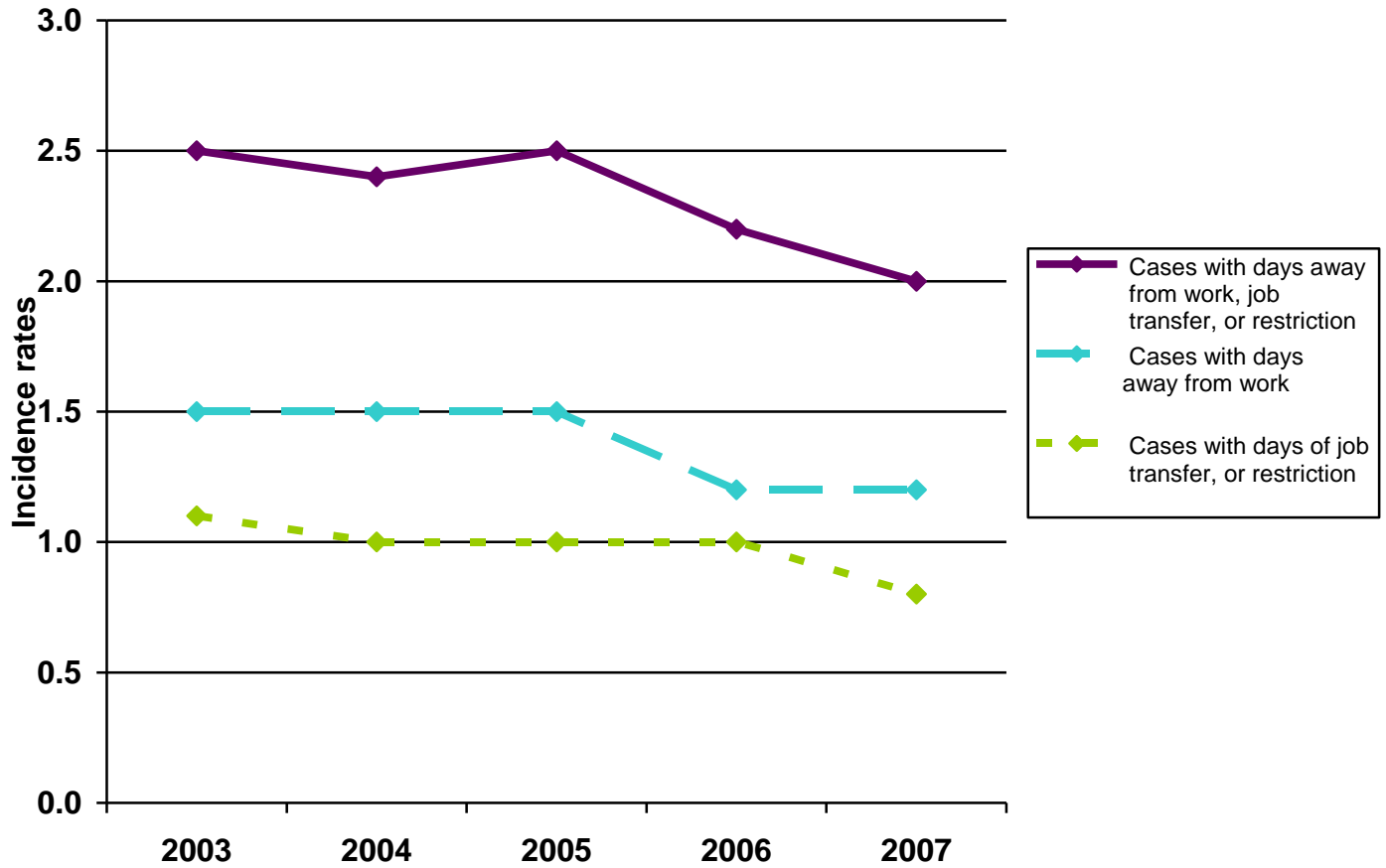
³ Data covers all 50 states

NOTE: Because of rounding, components may not add to totals.

Dashes indicate data that are not available.

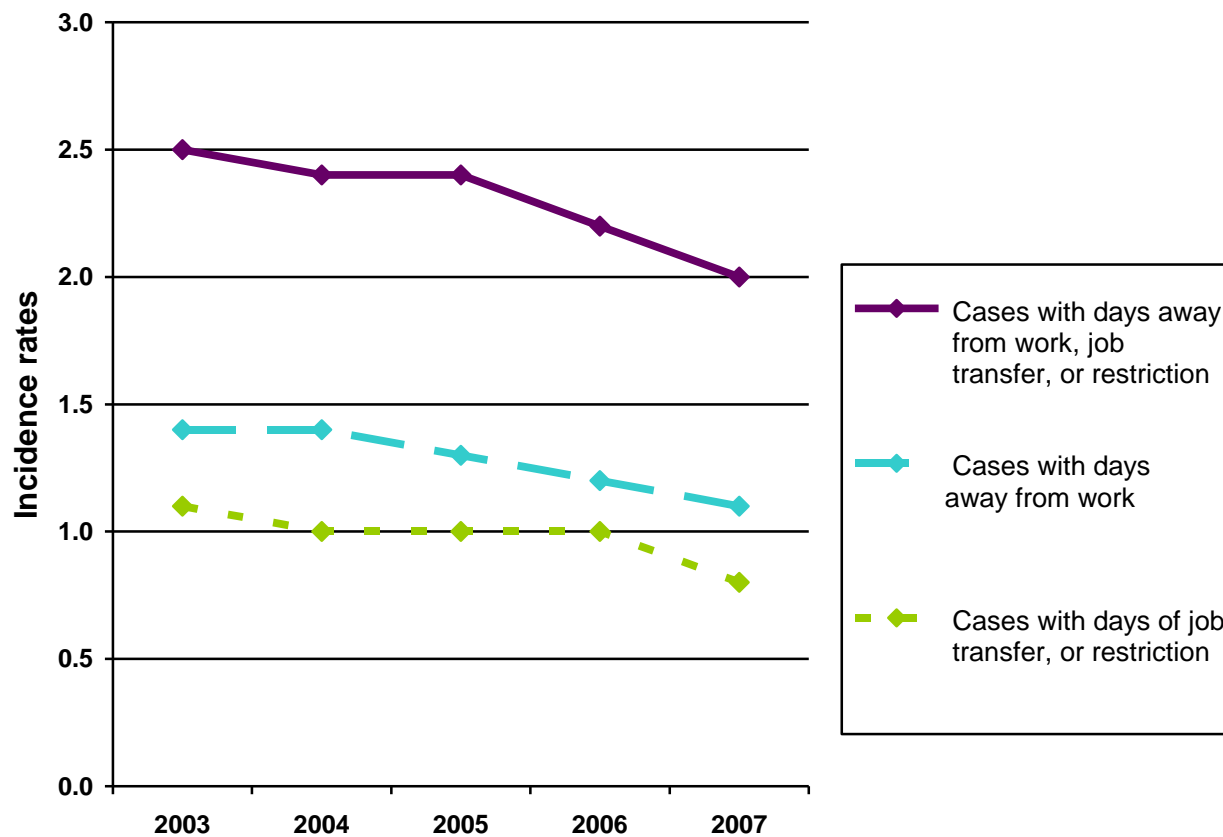
SOURCE: Bureau of Labor Statistics, U.S. Department of Labor, Survey of Occupational Injuries and Illnesses, in cooperation with participating state agencies

Figure 1. Cases with days away from work, job transfer, or restriction incidence rates injuries and illnesses, Illinois, private industry and state and local government, 2003-2007



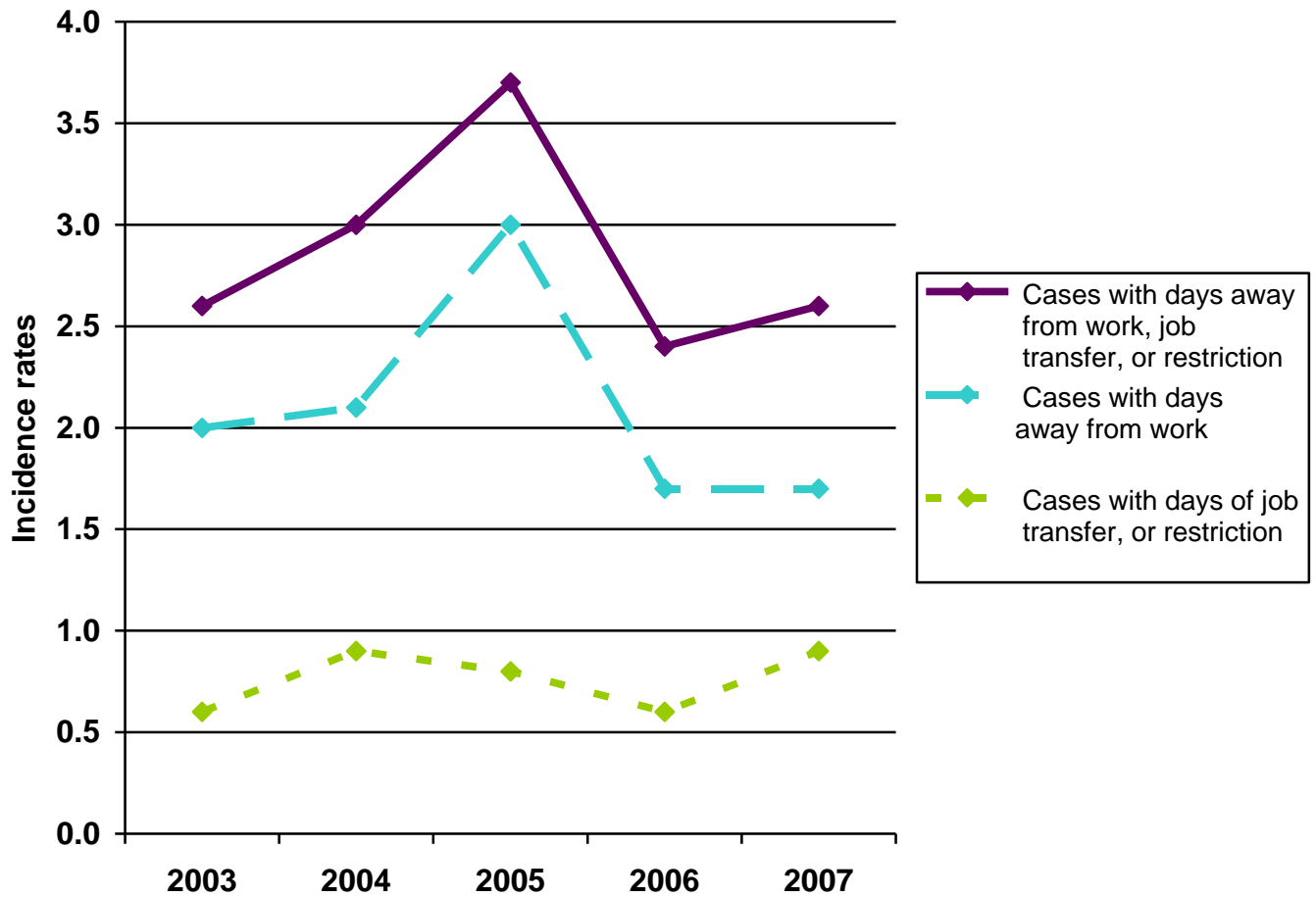
SOURCE: Bureau of Labor Statistics, U.S. Department of Labor, Survey of Occupational Injuries and Illnesses, in cooperation with participating state agencies

Figure 2. Cases with days away from work, job transfer, or restriction, incidence rates, injuries and illnesses, Illinois, private industry, 2003-2006



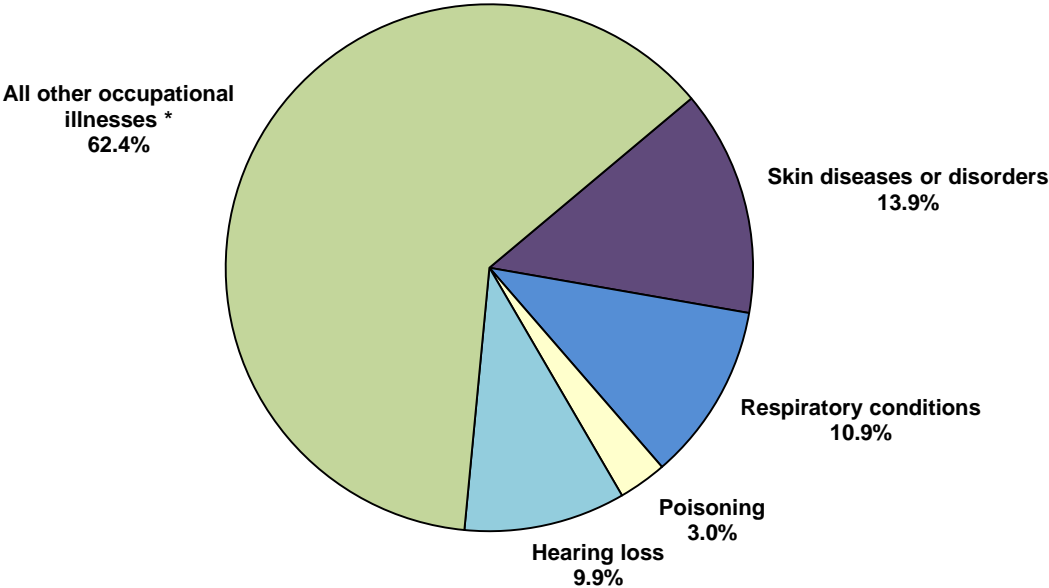
SOURCE: Bureau of Labor Statistics, U.S. Department of Labor, Survey of Occupational Injuries and Illnesses, in cooperation with participating state agencies

Figure 3. Cases with days away from work, job transfer, or restriction incidence rates, injuries and illnesses, Illinois, state and local governments, 2003-2007.



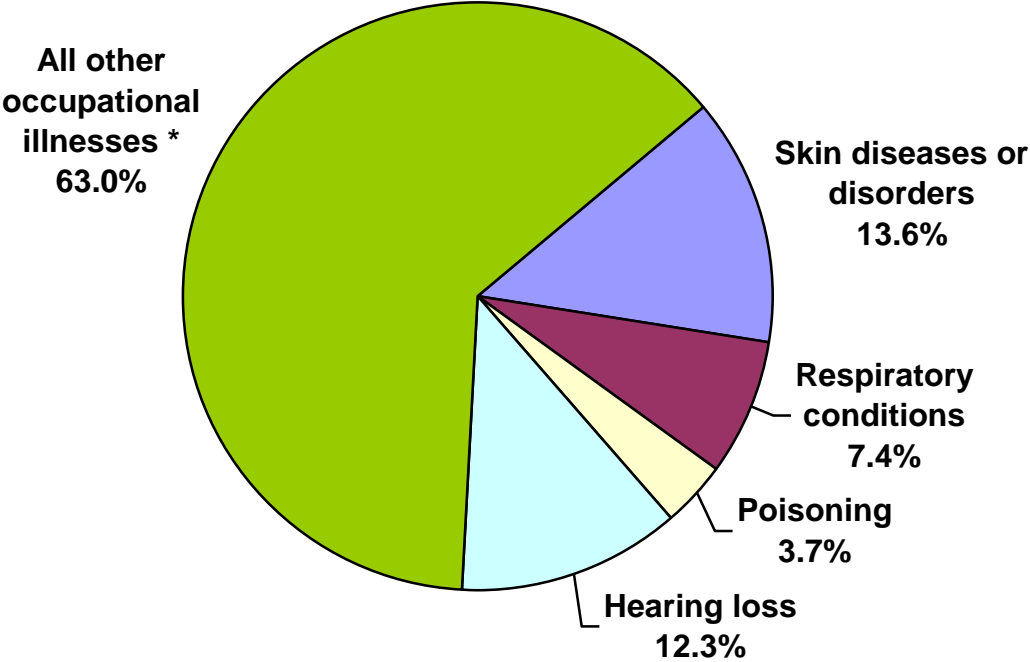
SOURCE: Bureau of Labor Statistics, U.S. Department of Labor, Survey of Occupational Injuries and Illnesses, in cooperation with participating state agencies

Figure 4. Distribution of injuries and illnesses by category of illness, Illinois, all industries, 2007



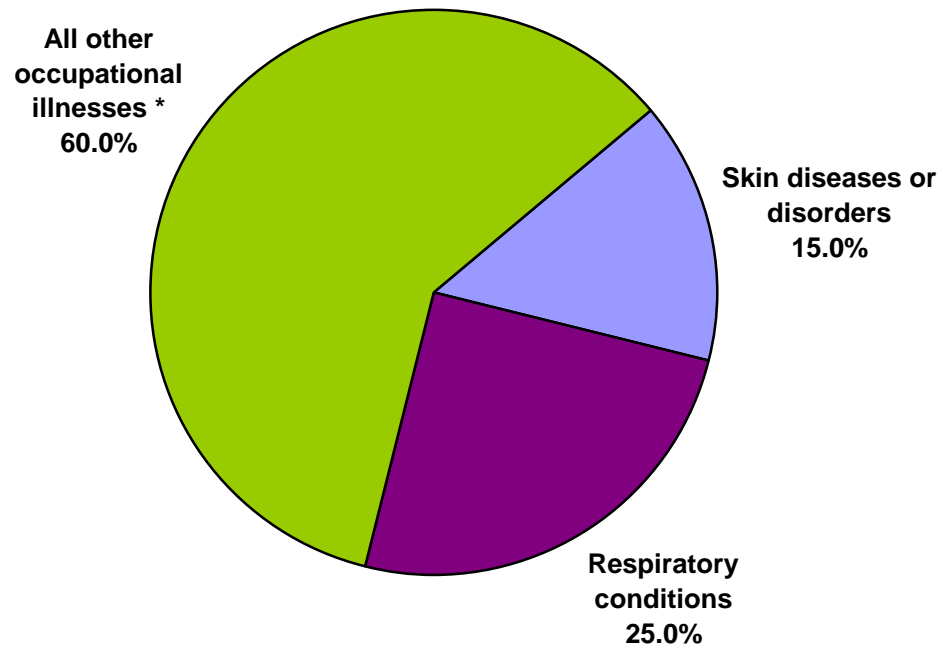
SOURCE: Bureau of Labor Statistics, U.S. Department of Labor, Survey of Occupational Injuries and Illnesses, in cooperation with participating state agencies

Figure 5. Distribution of injuries and illnesses by category of illness, Illinois, private industry, 2007



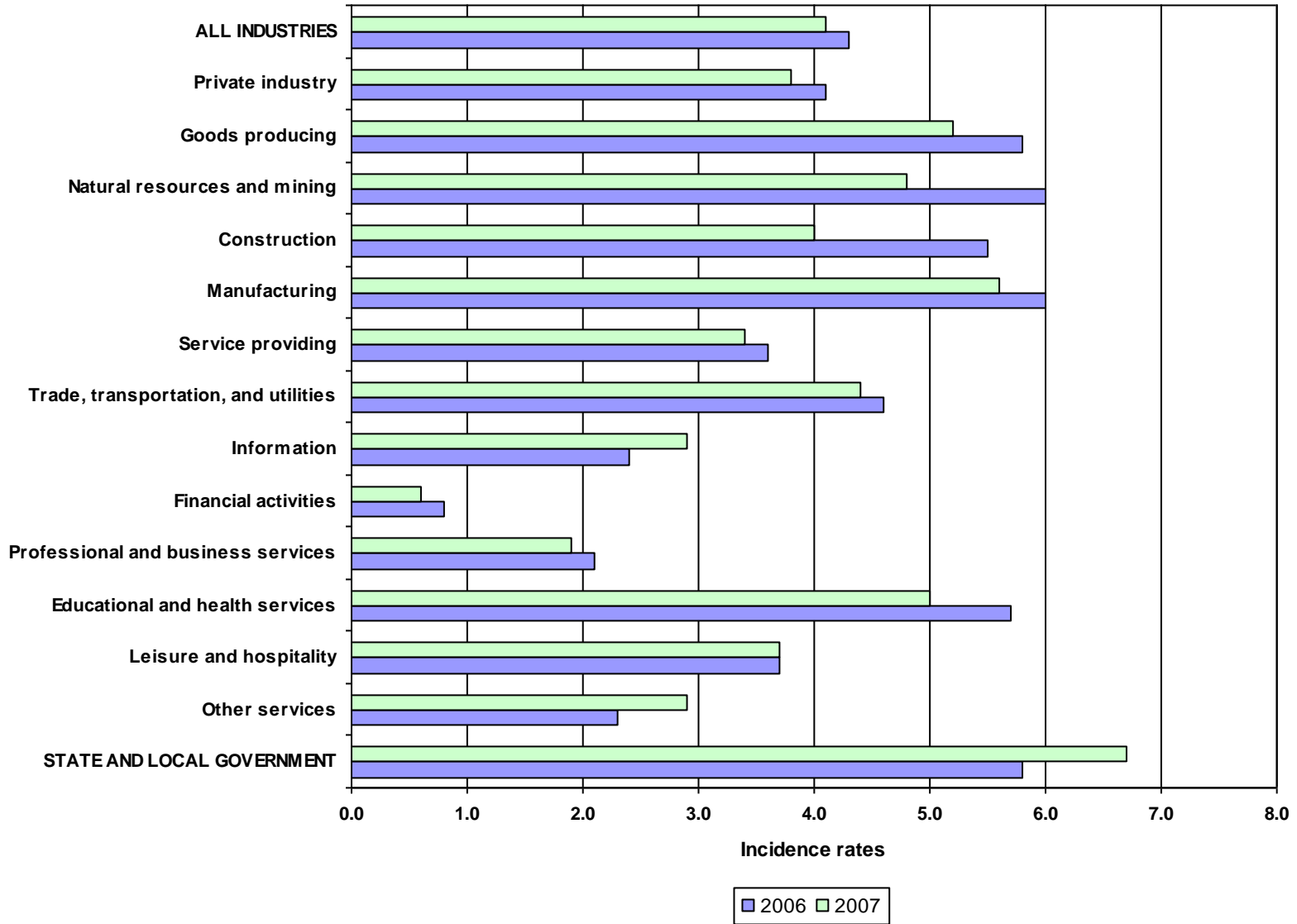
SOURCE: Bureau of Labor Statistics, U.S. Department of Labor, Survey of Occupational Injuries and Illnesses, in cooperation with participating state agencies

Figure 6. Distribution of injuries and illnesses by category of illness, Illinois, state and local government, 2007



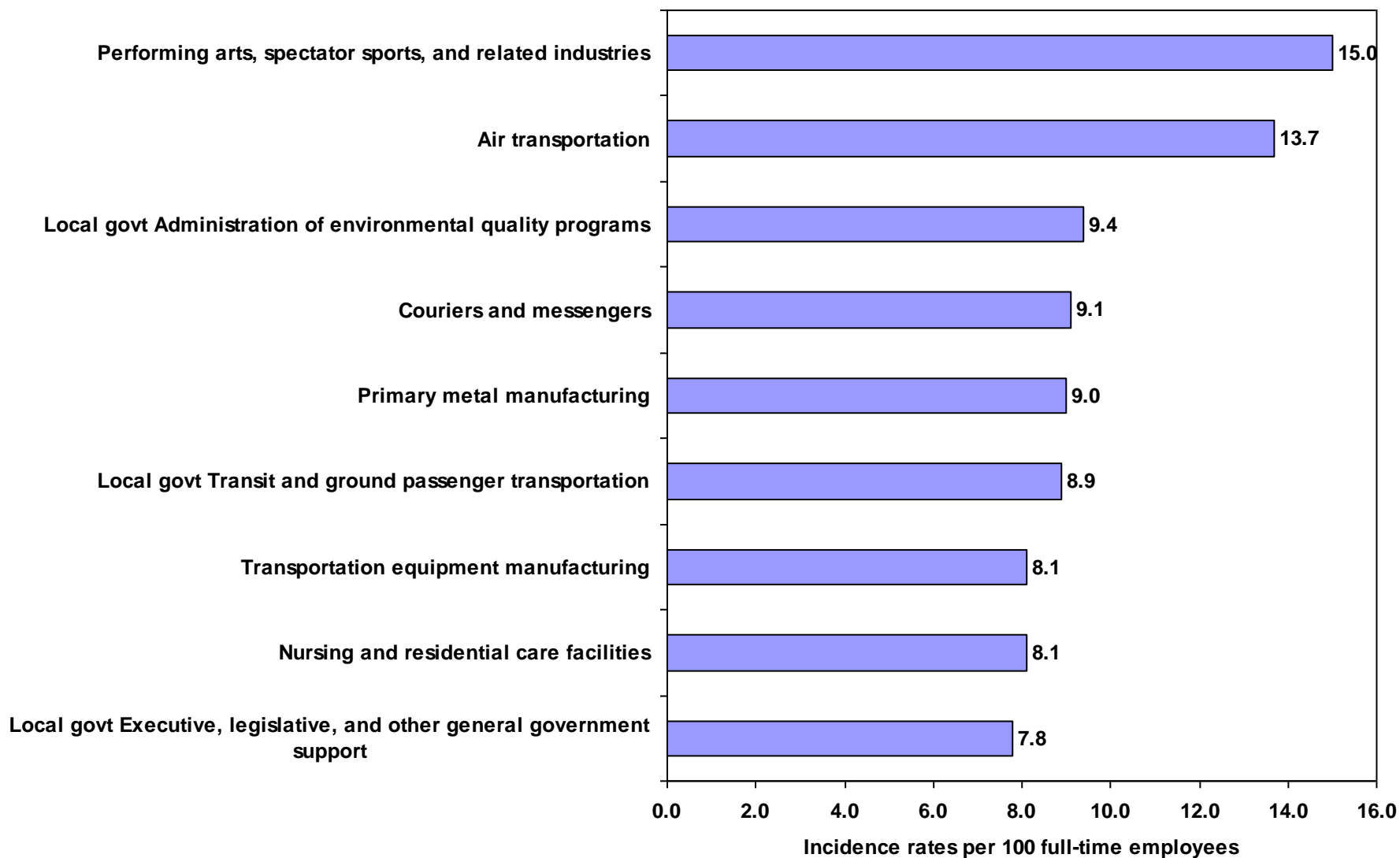
SOURCE: Bureau of Labor Statistics, U.S. Department of Labor, Survey of Occupational Injuries and Illnesses, in cooperation with participating state agencies

Figure 7. Incidence rates per 100 full-time workers for total nonfatal occupational injuries and illnesses by major industry sector, Illinois, 2006 and 2007



SOURCE: Bureau of Labor Statistics, U.S. Department of Labor, Survey of Occupational Injuries and Illnesses, in cooperation with participating state agencies

Figure 8. Major industries with the highest nonfatal occupational injury and illness rates per 100 full-time employees for total cases, Illinois, 2007



SOURCE: Bureau of Labor Statistics, U.S. Department of Labor, Survey of Occupational Injuries and Illnesses, in cooperation with participating state agencies

Appendix

Formulas

Incidence rates represent the number of injuries and illnesses per 100 full-time workers and were calculated as: $(N/DH) \times 200,000$ where

N = number of injuries and illnesses

EH = total hours worked by all employees during the calendar year

200,000 = base for 100 equivalent full-time workers (working 40 hours per week, 50 weeks per year)