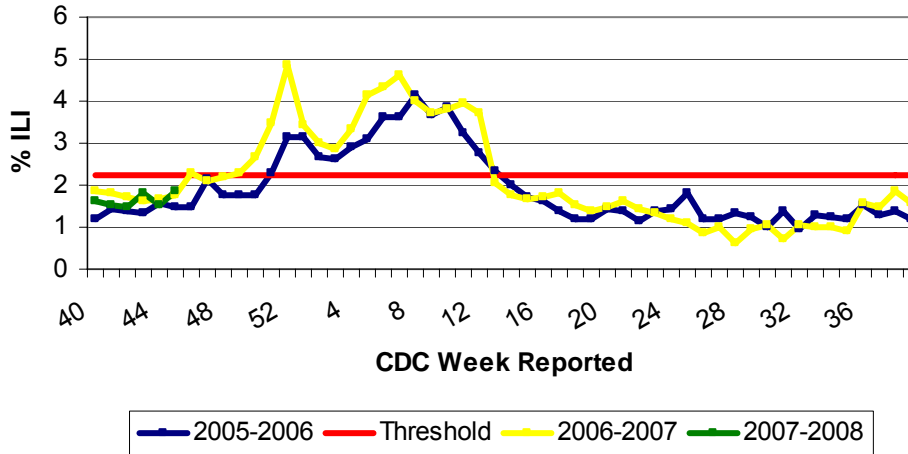


Illinois Department of Public Health
 Weekly Influenza Surveillance Report

Week ending November 03, 2007¹. Influenza Activity Level: **NO ACTIVITY²**

CDC Week	Sentinel Physicians	School Based Clinics	School Absences	Laboratory Confirmed Specimens
44	1.86%	1.24%	5.03%	1%

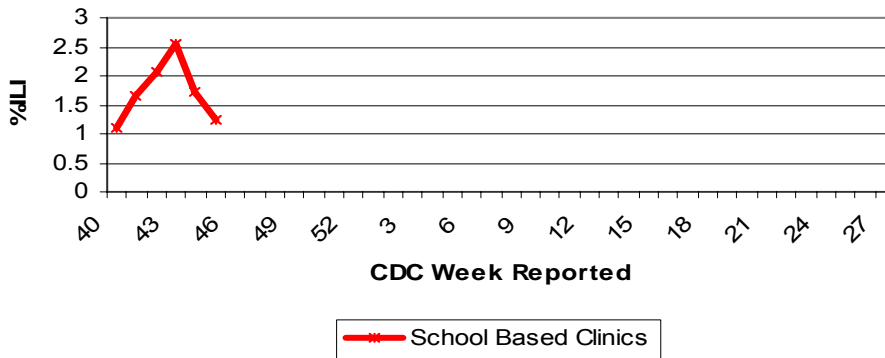
Illinois Sentinel Physician Surveillance



Illinois Physician Sentinel Data

- Weekly data weekly reported from participating physicians in Illinois with “influenza like illness” (ILI).³
- Age 0-4 184 visits
- Age 5-24 174 visits
- Age 25-64 90 visits
- 65 + 12 visits

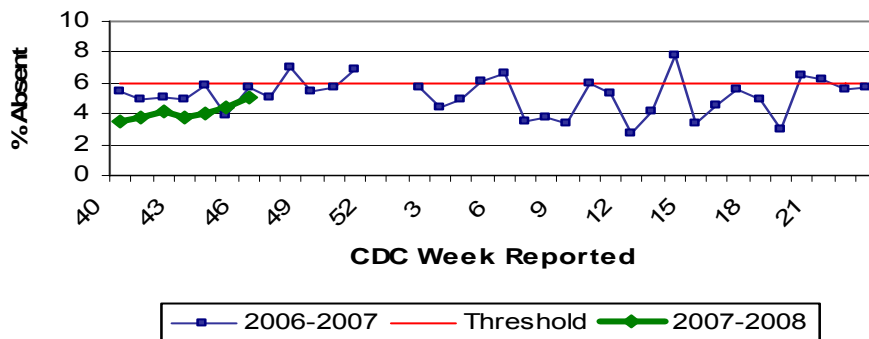
School Based Clinics



School Based Clinics

- Reports of students with influenza like illness (ILI) in selected clinics throughout the state

School Absenteeism Surveillance

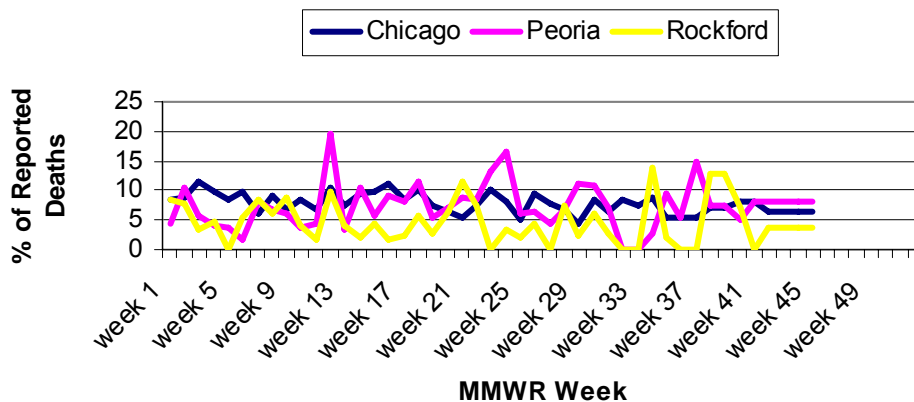


School Absenteeism Surveillance

- Selected schools throughout the state report student absence data, a surrogate indicator for influenza like illness during influenza season (October – May)
- Weeks 52 – Week 1 represent holiday break
- Absenteeism rate increased from previous week’s rate of 3.78%

Illinois Department of Public Health Weekly Influenza Surveillance Report

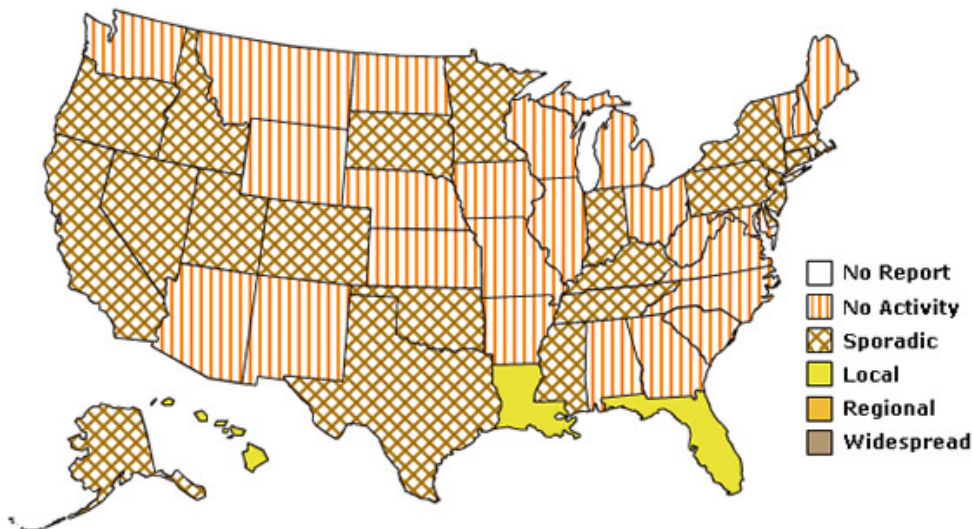
Influenza & Pneumonia Mortality in Selected Illinois Cities



Influenza & Pneumonia Mortality Surveillance

- Data from CDC 122 Cities Morbidity and Mortality Reporting System
- Reporting follows calendar year (January – December)
- All age groups represented
- No pediatric influenza or pneumonia deaths have been reported in Illinois this season

Weekly Influenza Activity Estimates Reported by State and Territorial Epidemiologists*
Week Ending November 10, 2007 - Week 45



*This map indicates geographic spread and does not measure the severity of influenza activity.

Other References/Resources:

Other References/Resources:

- Centers for Disease Control and Prevention Influenza Website: <http://www.cdc.gov/flu/weekly/fluactivity.htm>
- Immunization Action Coalition Website: <http://immunize.org/>

¹Data in this report is provisional and will be updated weekly.

² **No activity:** No laboratory confirmed cases of influenza and no reported increase in cases of influenza like illness (ILI).

Local: Outbreaks of influenza or increases in ILI and recent laboratory confirmed influenza in a single region of the state.

Regional: Outbreaks of influenza or increases in ILI and recent laboratory confirmed influenza in at least two but less than half the regions of the state.

Widespread: Outbreaks of influenza or increases in ILI cases and recent laboratory confirmed influenza in at least half the regions in the state.

³ Influenza like illness is defined as fever $\geq 100^{\circ}\text{F}$ and cough and or/ sore throat.

National Influenza Surveillance

- 24 states have reported some type of influenza activity

Military Recruits

- Respiratory illness in military recruits at Naval Recruit Training Command (Great Lakes, Lake County) was 1.91%

WHO/NREVSS Participating Laboratories (IL)

- 98 laboratory specimens tested for Influenza
- Influenza A (H1) 0
- Influenza A (H3) 0
- Influenza A (unknown) 0
- Influenza B 1