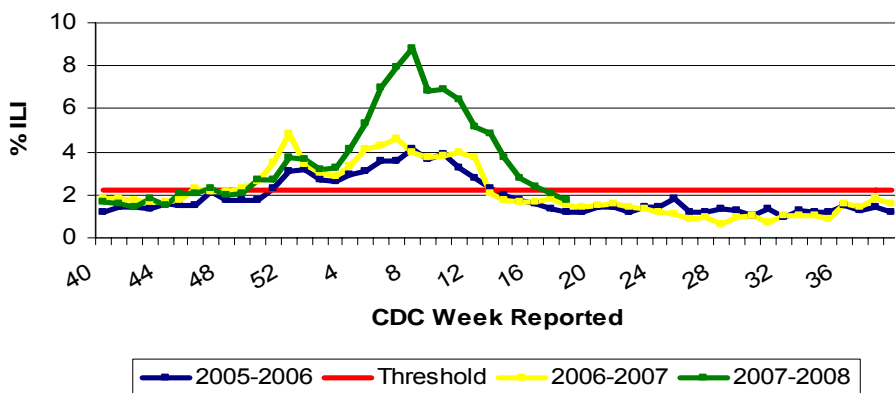


Illinois Department of Public Health Weekly Influenza Surveillance Report

Week ending May 03, 2008¹. Influenza Activity Level: **SPORADIC**²

CDC Week	Sentinel Physicians	School Based Clinics	Long Term Care Facilities	School Absences	Laboratory Confirmed Specimens
18	1.76%	0.20%	0%	4.41%	5

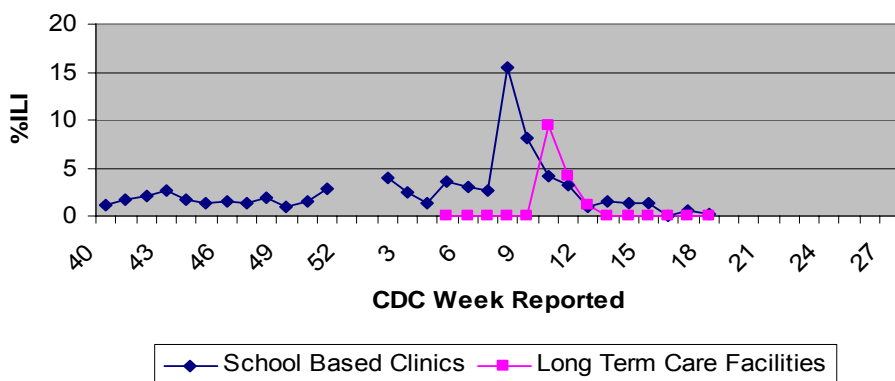
Illinois Sentinel Physician Surveillance



Illinois Physician Sentinel Data

- Weekly data reported from participating physicians attributing patient office visits to “influenza like illness” (ILI)³
- Age 0-4: 128
- Age 5-24: 135
- Age 25-64: 85
- 65+: 16

School Based Clinics and Long Term Care Facilities



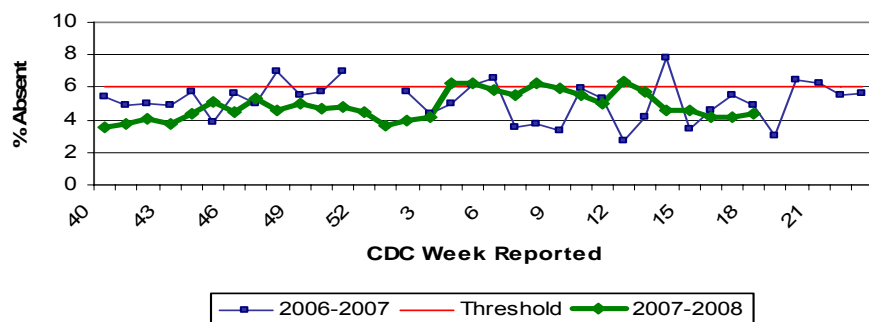
School Based Clinics

- Reports of students with influenza like illness (ILI) in selected clinics throughout the state
- Weeks 52 – Week 1 represent holiday break

Long Term Care Facilities

- Reports of residents with influenza like illness (ILI) in selected long term care facilities in the state

School Absenteeism Surveillance

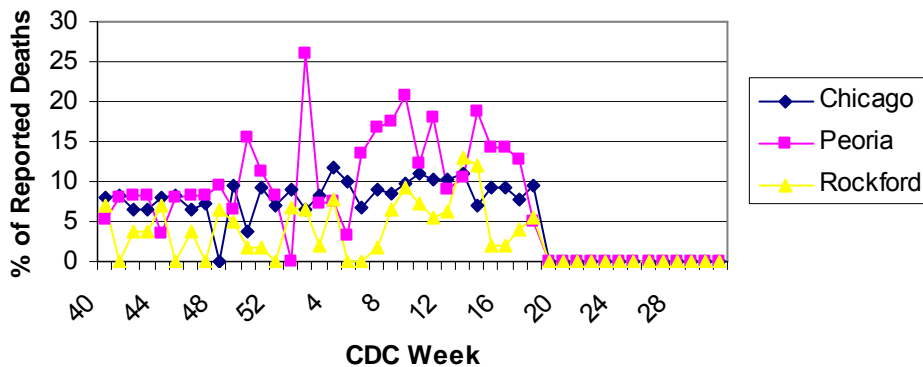


School Absenteeism Surveillance

- Selected schools throughout the state report student absence data, a surrogate indicator for influenza like illness during flu season (October – May)
- Weeks 52 – Week 1 represent holiday break

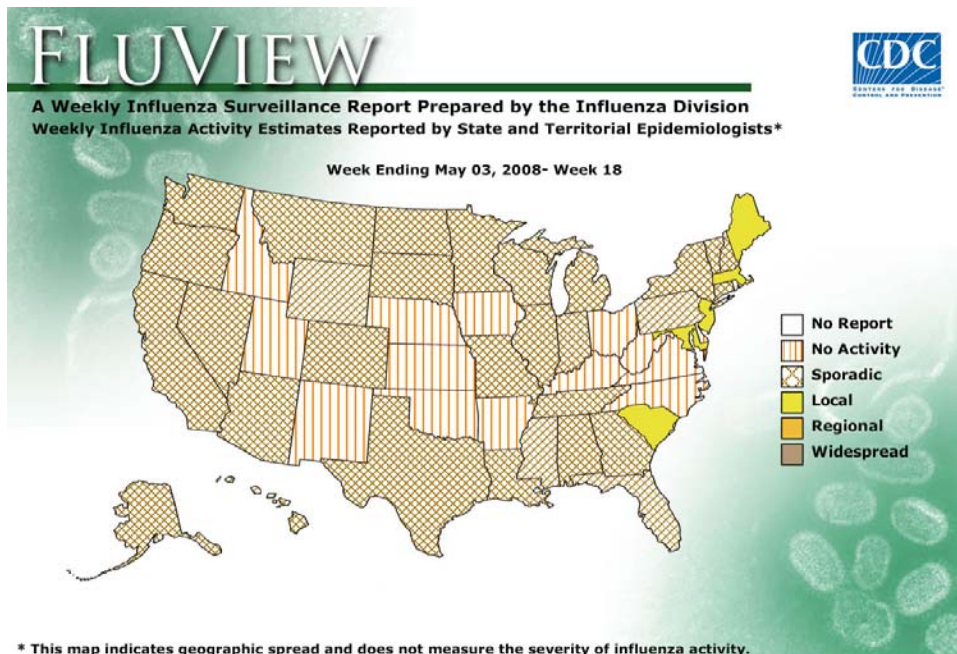
Illinois Department of Public Health Weekly Influenza Surveillance Report

Influenza & Pneumonia Mortality in Selected Illinois Cities



Influenza & Pneumonia Mortality Surveillance

- Data from CDC 122 Cities Morbidity and Mortality Reporting System
- All age groups represented
- Five pediatric influenza/pneumonia deaths have been reported this season. Two deaths remain under investigation



Laboratory Surveillance

- Respiratory illness in military recruits at Naval Recruit Training Command Great Lakes was reported below expected levels this week
- Five laboratory specimens were submitted for testing, all were positive for influenza
- Influenza A (H1) 0
- Influenza A (H3) 1
- Influenza A (unknown) 0
- Influenza B 4

National Influenza Surveillance

- Five states reported local influenza activity, 30 states sporadic activity, 15 states no activity.

Other References/Resources:

- Centers for Disease Control and Prevention Influenza Website: <http://www.cdc.gov/flu/weekly/fluactivity.htm>
- Immunization Action Coalition Website: <http://immunize.org/>

¹Data in this report is provisional and will be updated weekly.

² **No activity:** No laboratory confirmed cases of influenza and no reported increase in cases of influenza like illness (ILI).

Sporadic: Small numbers of laboratory confirmed influenza cases or a single laboratory confirmed influenza in a single region of the state.

Local: Outbreaks of influenza or increases in ILI and recent laboratory confirmed influenza in a single region of the state.

Regional: Outbreaks of influenza or increases in ILI and recent laboratory confirmed influenza in at least two but less than half the regions of the state.

Widespread: Outbreaks of influenza or increases in ILI cases and recent laboratory confirmed influenza in at least half the regions in the state.

³ Influenza like illness is defined as fever $\geq 100^{\circ}\text{F}$ and cough and or/ sore throat.