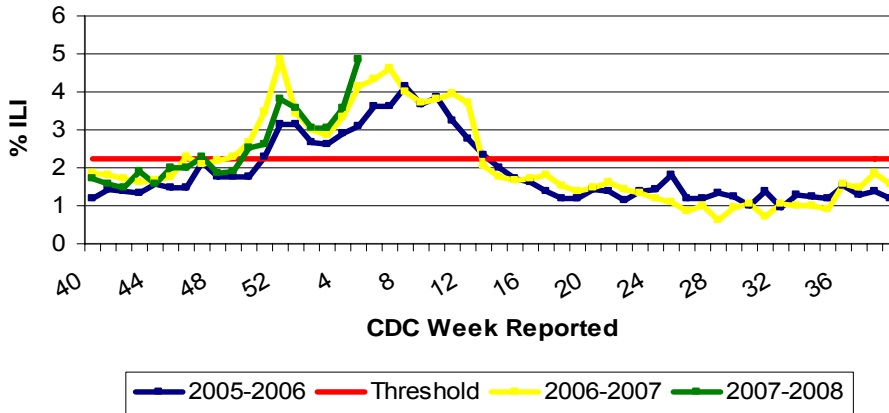


Illinois Department of Public Health
 Weekly Influenza Surveillance Report

Week ending February 2, 2008¹. Influenza Activity Level: **REGIONAL²**

CDC Week	Sentinel Physicians	School Based Clinics	School Absences	Laboratory Confirmed Specimens
05	4.86%	3.63%	6.21%	23

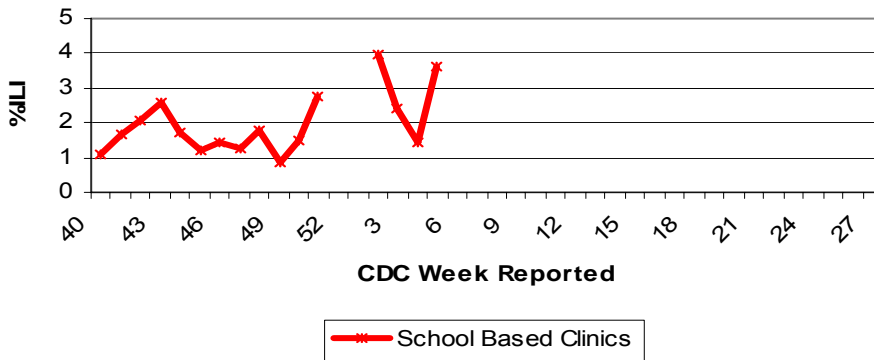
Illinois Sentinel Physician Surveillance



Illinois Physician Sentinel Data

- Weekly data reported from participating physicians attributing patient office visits to “influenza like illness” (ILI)³
- Age 0-4 246
- Age 5-24 398
- Age 25-64 299
- 65 + 49

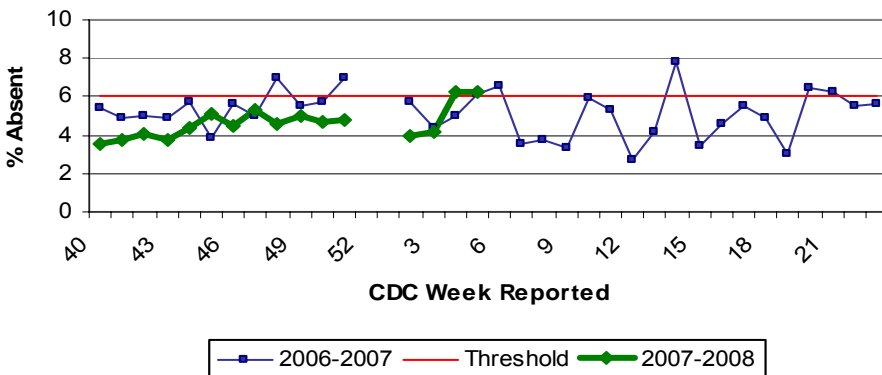
School Based Clinics



School Based Clinics

- Reports of students with influenza like illness (ILI) in selected clinics throughout the state
- Weeks 52 – Week 1 represent holiday break

School Absenteeism Surveillance

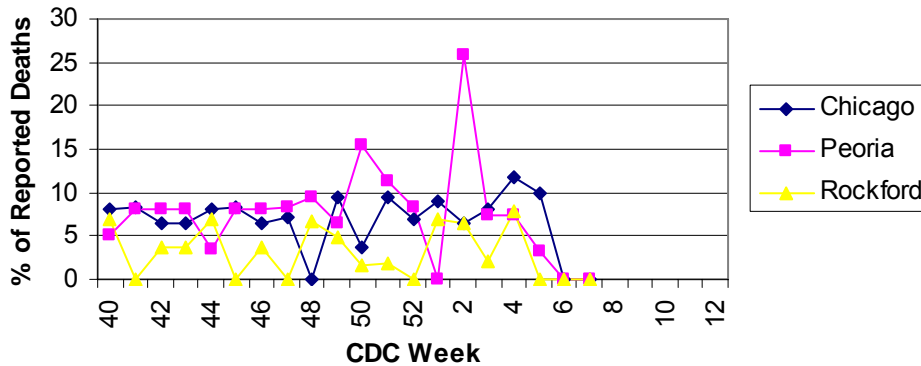


School Absenteeism Surveillance

- Selected schools throughout the state report student absence data, a surrogate indicator for influenza like illness during flu season (October – May)
- Weeks 52 – Week 1 represent holiday break

Illinois Department of Public Health Weekly Influenza Surveillance Report

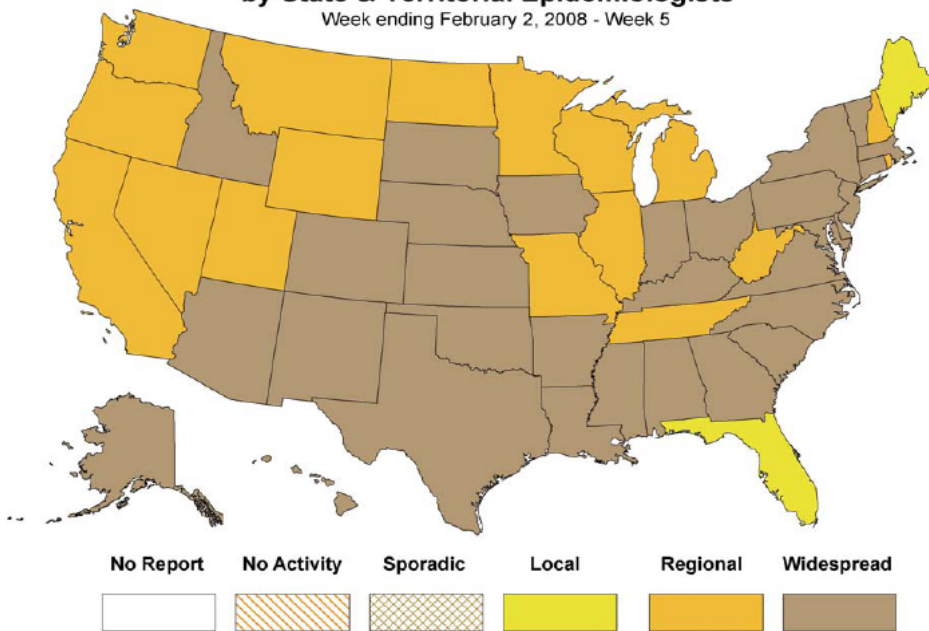
Influenza & Pneumonia Mortality in Selected Illinois Cities



Influenza & Pneumonia Mortality Surveillance

- Data from CDC 122 Cities Morbidity and Mortality Reporting System
- Reporting follows calendar year January through December
- All age groups represented
- No pediatric influenza or pneumonia deaths reported in Illinois

Weekly Influenza Activity Estimates Reported by State & Territorial Epidemiologists* Week ending February 2, 2008 - Week 5



Laboratory Surveillance

- Respiratory illness in military recruits at Naval Recruit Training Command Great Lakes was above expected levels during this week
- Thirty-one laboratory specimens were submitted for testing, 23 tested positive for influenza
 - Influenza A (H1) 8
 - Influenza A (H3) 5
 - Influenza A (unknown) 7
 - Influenza B 3

National Influenza Surveillance

- All states have reported influenza activity

Other References/Resources:

Other References/Resources:

- Centers for Disease Control and Prevention Influenza Website: <http://www.cdc.gov/flu/weekly/fluactivity.htm>
- Immunization Action Coalition Website: <http://immunize.org/>

¹Data in this report is provisional and will be updated weekly.

² **No activity:** No laboratory confirmed cases of influenza and no reported increase in cases of influenza like illness (ILI).

Sporadic: Small numbers of laboratory confirmed influenza cases or a single laboratory confirmed influenza in a single region of the state.

Local: Outbreaks of influenza or increases in ILI and recent laboratory confirmed influenza in a single region of the state.

Regional: Outbreaks of influenza or increases in ILI and recent laboratory confirmed influenza in at least two but less than half the regions of the state.

Widespread: Outbreaks of influenza or increases in ILI cases and recent laboratory confirmed influenza in at least half the regions in the state.

³ Influenza like illness is defined as fever $\geq 100^{\circ}\text{F}$ and cough and or/ sore throat.