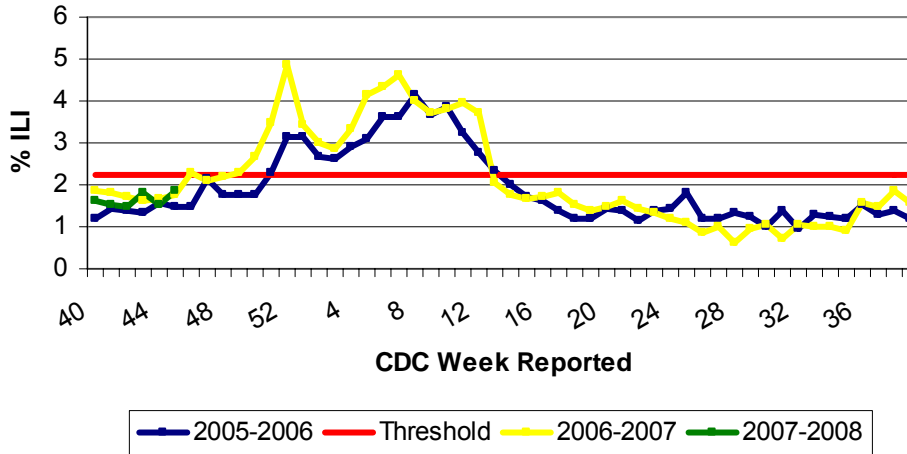


Illinois Department of Public Health  
 Weekly Influenza Surveillance Report

Week ending November 10, 2007<sup>1</sup>. Influenza Activity Level: **NO ACTIVITY<sup>2</sup>**

CDC Week	Sentinel Physicians	School Based Clinics	School Absences	Laboratory Confirmed Specimens
45	1.86%	1.24%	5.03%	1%

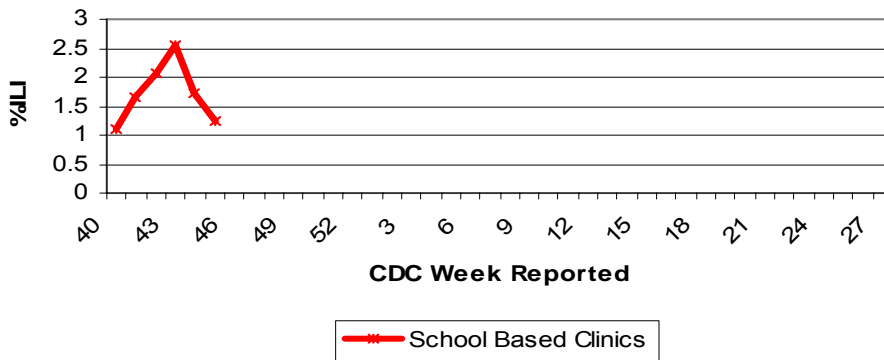
**Illinois Sentinel Physician Surveillance**



**Illinois Physician Sentinel Data**

- Weekly data weekly reported from participating physicians in Illinois with “influenza like illness” (ILI).<sup>3</sup>
- Age 0-4 184 visits
- Age 5-24 174 visits
- Age 25-64 90 visits
- 65 + 12 visits

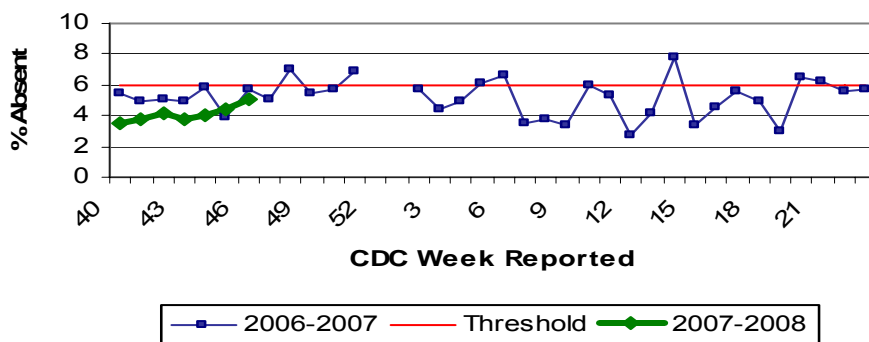
**School Based Clinics**



**School Based Clinics**

- Reports of students with influenza like illness (ILI) in selected clinics throughout the state

**School Absenteeism Surveillance**

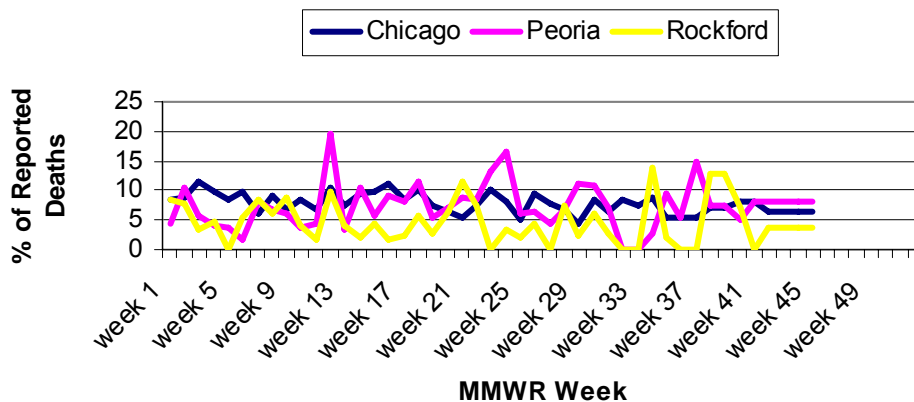


**School Absenteeism Surveillance**

- Selected schools throughout the state report student absence data, a surrogate indicator for influenza like illness during influenza season (October – May)
- Weeks 52 – Week 1 represent holiday break
- Absenteeism rate increased from previous week’s rate of 3.78%

# Illinois Department of Public Health Weekly Influenza Surveillance Report

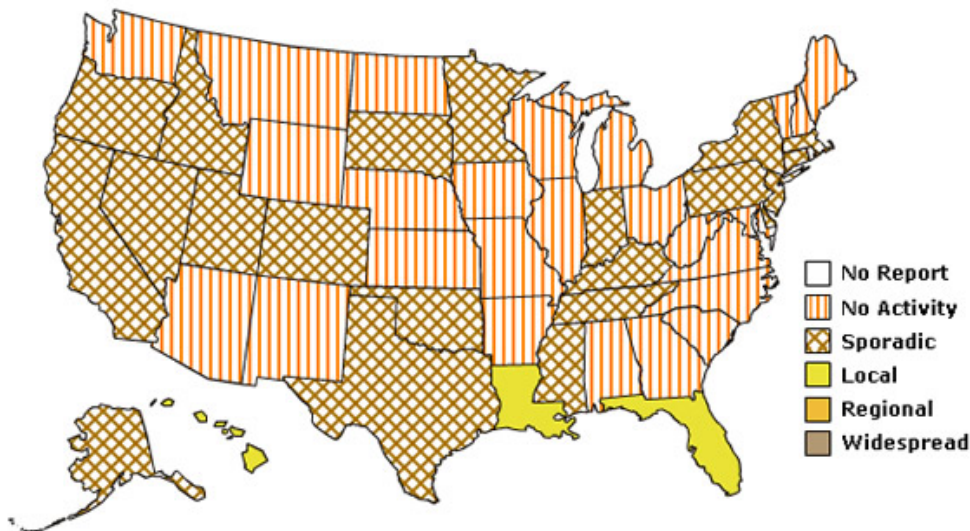
## Influenza & Pneumonia Mortality in Selected Illinois Cities



## Influenza & Pneumonia Mortality Surveillance

- Data from CDC 122 Cities Morbidity and Mortality Reporting System
- Reporting follows calendar year (January – December)
- All age groups represented
- No pediatric influenza or pneumonia deaths have been reported in Illinois this season

Weekly Influenza Activity Estimates Reported by State and Territorial Epidemiologists\*  
Week Ending November 10, 2007 - Week 45



\*This map indicates geographic spread and does not measure the severity of influenza activity.

Other References/Resources:

Other References/Resources:

- Centers for Disease Control and Prevention Influenza Website: <http://www.cdc.gov/flu/weekly/fluactivity.htm>
- Immunization Action Coalition Website: <http://immunize.org/>

<sup>1</sup>Data in this report is provisional and will be updated weekly.

<sup>2</sup> **No activity:** No laboratory confirmed cases of influenza and no reported increase in cases of influenza like illness (ILI).

**Local:** Outbreaks of influenza or increases in ILI and recent laboratory confirmed influenza in a single region of the state.

**Regional:** Outbreaks of influenza or increases in ILI and recent laboratory confirmed influenza in at least two but less than half the regions of the state.

**Widespread:** Outbreaks of influenza or increases in ILI cases and recent laboratory confirmed influenza in at least half the regions in the state.

<sup>3</sup> Influenza like illness is defined as fever  $\geq 100^{\circ}\text{F}$  and cough and or/ sore throat.

## National Influenza Surveillance

- 24 states have reported some type of influenza activity

## Military Recruits

- Respiratory illness in military recruits at Naval Recruit Training Command (Great Lakes, Lake County) was 1.91%

## WHO/NREVSS Participating Laboratories (IL)

- 98 laboratory specimens tested for Influenza
- Influenza A (H1) 0
- Influenza A (H3) 0
- Influenza A (unknown) 0
- Influenza B 1