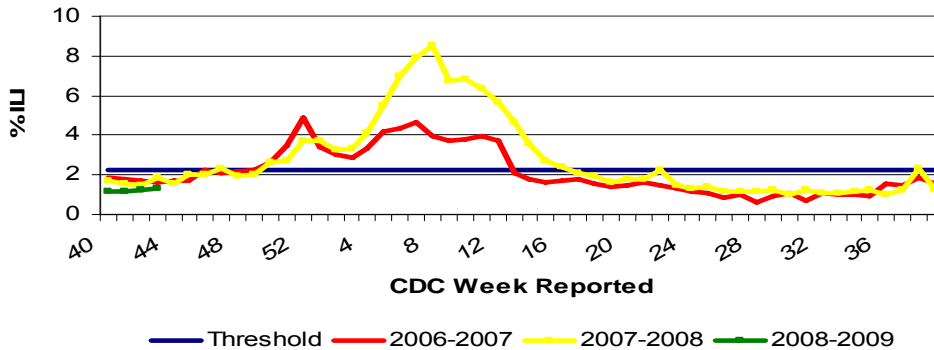


# IDPH Weekly Influenza Surveillance Report

Week ending October 25, 2008<sup>1</sup> Influenza Activity Level: **NO ACTIVITY**<sup>2</sup>

CDC Week	Sentinel Providers	Laboratory Confirmed Specimens
43	1.35%	0

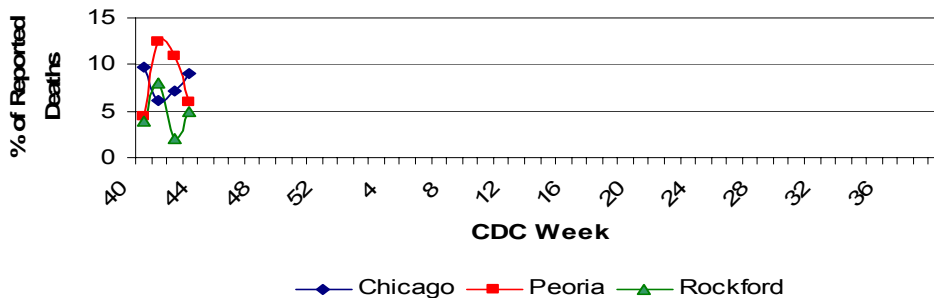
## Illinois Sentinel Provider Surveillance Network



## Illinois Sentinel Provider Data

- Weekly data reported from participating medical practitioners attributing patient office visits to "influenza like illness" (ILI)<sup>3</sup>
- Age 0-4: 138
- Age 5-24: 166
- Age 25-64: 75
- 65+: 25

## Influenza & Pneumonia Mortality in Selected Illinois Cities

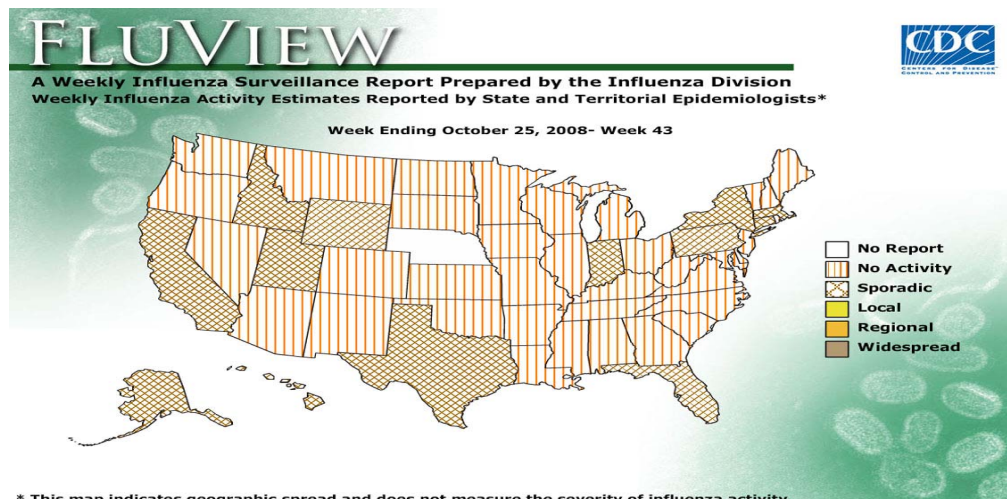


## Influenza & Pneumonia Mortality Surveillance

- Data from CDC 122 Cities Morbidity and Mortality Reporting System
- All age groups represented
- No pediatric influenza/pneumonia deaths have been reported this season.

## Laboratory Surveillance

- Respiratory illness in military recruits at Naval Recruit Training Command Great Lakes was reported below expected levels this week
- No positive specimens have been reported by the state laboratory
- Influenza A (H1): 0
- Influenza A (H3): 0
- Influenza A (unknown): 0
- Influenza B: 0



\* This map indicates geographic spread and does not measure the severity of influenza activity.

Other References/Resources:

- Centers for Disease Control and Prevention Influenza Website: <http://www.cdc.gov/flu/weekly/fluactivity.htm>
- Immunization Action Coalition Website: <http://immunize.org/>
- IDPH Website: <http://www.idph.state.il.us/flu/surveillance.htm>

## National Influenza Surveillance

- Thirteen states reported sporadic activity, 36 states reported no activity. One state did not report

<sup>1</sup> Data in this report is provisional and will be updated weekly.

<sup>2</sup> No activity: No laboratory confirmed cases of influenza and no reported increase in cases of influenza like illness (ILI).

**Sporadic:** Small numbers of laboratory confirmed influenza cases or a single laboratory confirmed influenza in a single region of the state.

**Local:** Outbreaks of influenza or increases in ILI and recent laboratory confirmed influenza in a single region of the state.

**Regional:** Outbreaks of influenza or increases in ILI and recent laboratory confirmed influenza in at least two but less than half the regions of the state.

**Widespread:** Outbreaks of influenza or increases in ILI cases and recent laboratory confirmed influenza in at least half the regions in the state.

<sup>3</sup> "Influenza like illness" is defined as fever  $\geq 100^{\circ}\text{F}$  and cough and/or sore throat.