

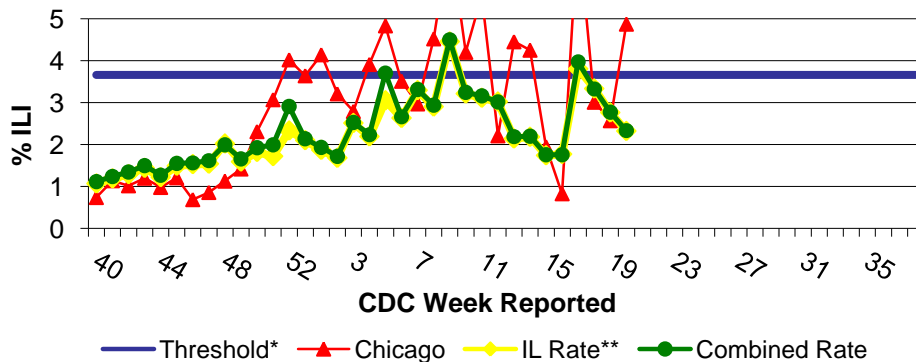
IDPH Weekly Influenza Surveillance Report

Week ending May 23, 2009¹ Influenza Activity Level: **REGIONAL²**

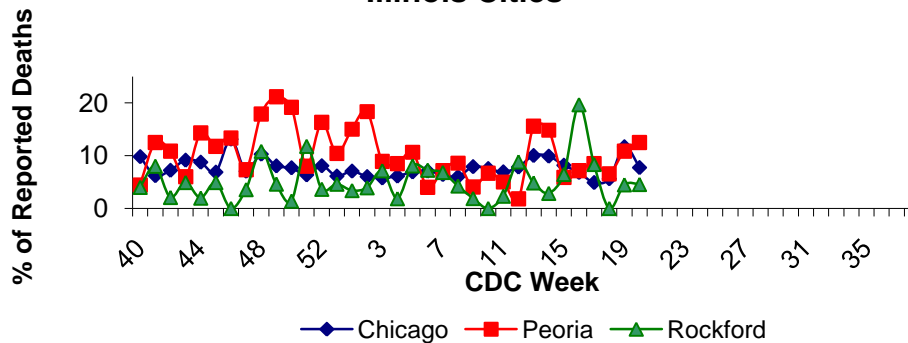


CDC Week	Sentinel Providers - %ILI	Lab Confirmed Specimens
20	2.33	251

Illinois Sentinel Provider Surveillance Network

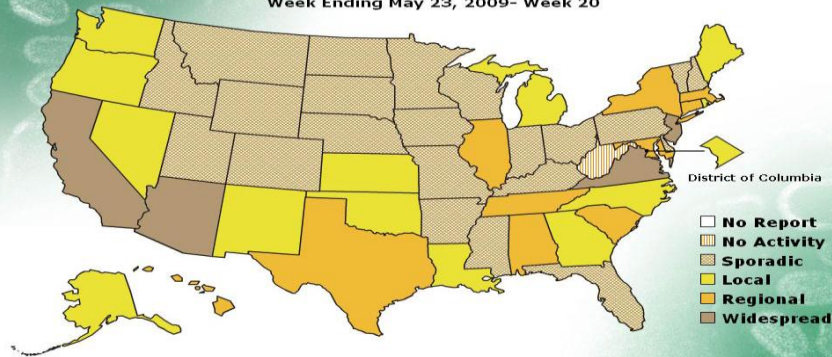


Influenza & Pneumonia Mortality in Selected Illinois Cities



FLUVIEW

A Weekly Influenza Surveillance Report Prepared by the Influenza Division
Weekly Influenza Activity Estimates Reported by State and Territorial Epidemiologists*
Week Ending May 23, 2009- Week 20



*This map indicates geographic spread and does not measure the severity of influenza activity.

No activity: No laboratory confirmed cases of influenza and no reported increase in cases of influenza like illness (ILI).

Sporadic: Small numbers of laboratory confirmed influenza cases or a single laboratory confirmed influenza in a single region of the state.

Local: Outbreaks of influenza or increases in ILI and recent laboratory confirmed influenza in a single region of the state.

Regional: Outbreaks of influenza or increases in ILI and recent laboratory confirmed influenza in at least two but less than half the regions of the state.

Widespread: Outbreaks of influenza or increases in ILI cases and recent laboratory confirmed influenza in at least half the regions in the state.

³"Influenza like illness" is defined as fever $\geq 100^{\circ}\text{F}$ and cough and/or sore throat.

*Threshold=3.66%

**ILI data excluding the City of Chicago

¹Data in this report is provisional and will be updated weekly

Novel Influenza A (H1N1) Virus

In the US, eight thousand nine hundred seventy-five human infections with swine origin influenza A (H1N1) virus have been confirmed in 49 states including the District of Columbia as of 5/23/09. There have been 15 deaths linked to H1N1 in 7 states - AZ (3), IL (2), MO (1), NY (4), TX (3), UT (1), WA (1).

Illinois Sentinel Provider Data¹

Weekly data reported from participating medical practitioners attributing patient office visits to "influenza like illness" (ILI)³

• Age 0-4	211
• Age 5-24	297
• Age 25-64	124
• 65 +	25

Influenza & Pneumonia Mortality Surveillance

- Data from CDC 122 Cities Morbidity and Mortality Reporting System
- All age groups represented
- One influenza-associated pediatric death was reported nation-wide for CDC week 20.

Laboratory Surveillance¹

- Respiratory illness in military recruits at NRTC Great Lakes was reported as at or below expected value.
- Two hundred fifty-one specimens have been reported to IDPH for CDC week 20 (specimens tested between 5/17/09-5/23/09).

• Influenza A (H1)	1
• Influenza A (H3)	3
• Influenza A (unknown)	9
• Influenza B	0
• Novel Influenza A (H1N1)	238

Chicago IDPH lab data is pending for week 20.

National Influenza Surveillance

Four states reported widespread activity, 11 states reported regional activity, the District of Columbia and 13 states reported local activity, 21 states reported sporadic activity and one state reported no activity.

Other References/Resources:

- Centers for Disease Control and Prevention Influenza Website: <http://www.cdc.gov/flu/weekly/fluactivity.htm>
- Immunization Action Coalition Website: <http://immunize.org/>
- IDPH Website: <http://www.idph.state.il.us/flu/surveillance.htm>