

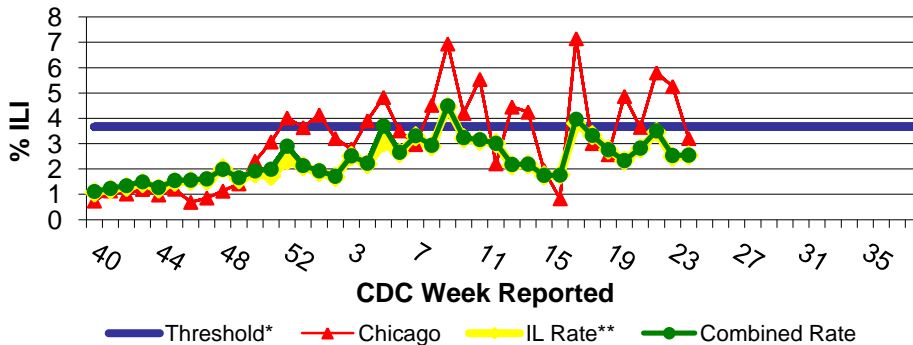
IDPH Weekly Influenza Surveillance Report

Week ending June 20, 2009¹ Influenza Activity Level: **REGIONAL²**

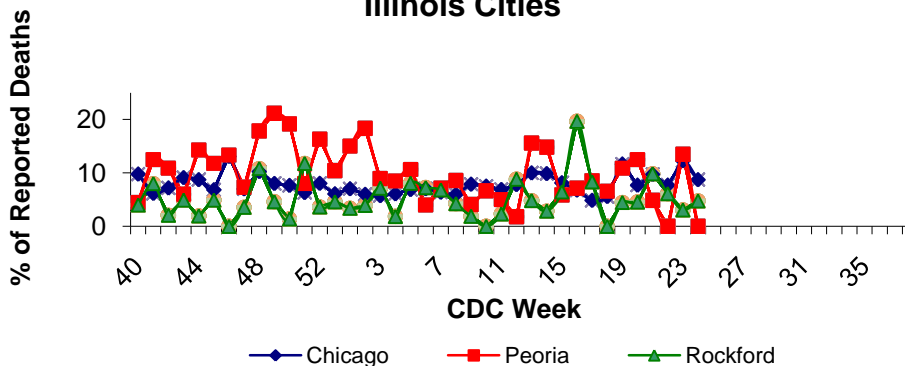


CDC Week	Sentinel Providers - %ILI	Lab Confirmed Specimens
24	2.55	353

Illinois Sentinel Provider Surveillance Network



Influenza & Pneumonia Mortality in Selected Illinois Cities



Novel Influenza A (H1N1) Virus

As of 6/20/09, there have been 27,717 confirmed and probable human infections with swine origin influenza A (H1N1) virus in 52 states including the District of Columbia, Puerto Rico and the US Virgin Islands. There have been 127 deaths linked to H1N1 in 22 states. Click the link below for details: <http://www.cdc.gov/h1n1flu/update.htm>

Illinois Sentinel Provider Data¹

Weekly data reported from participating medical practitioners attributing patient office visits to "influenza like illness" (ILI)³

- Age 0-4 213
- Age 5-24 240
- Age 25-64 154
- 65 + 29

Influenza & Pneumonia Mortality Surveillance

- Data from CDC 122 Cities Morbidity and Mortality Reporting System
- All age groups represented
- Five influenza-associated pediatric deaths were reported nation-wide for CDC week 24. Four of the 5 deaths were associated with influenza A (H1N1) virus infection.

Great Lakes Naval Academy Febrile Respiratory Illness Surveillance Update

Febrile respiratory illness in military recruits at NRTC Great Lakes was reported as at or below expected value.

Laboratory Surveillance¹

- Three hundred fifty-three specimens have been reported to IDPH for CDC week 24 (specimens reported between 6/14/09-6/20/09).
- Influenza A (H1) 0
- Influenza A (H3) 2
- Influenza A (unknown) 1
- Influenza B 0
- Novel Influenza A (H1N1) 350

National Influenza Surveillance

Twelve states reported widespread activity, 7 states reported regional activity, the District of Columbia and 11 states reported local activity, and Puerto Rico and 20 states reported sporadic activity.

Other References/Resources:

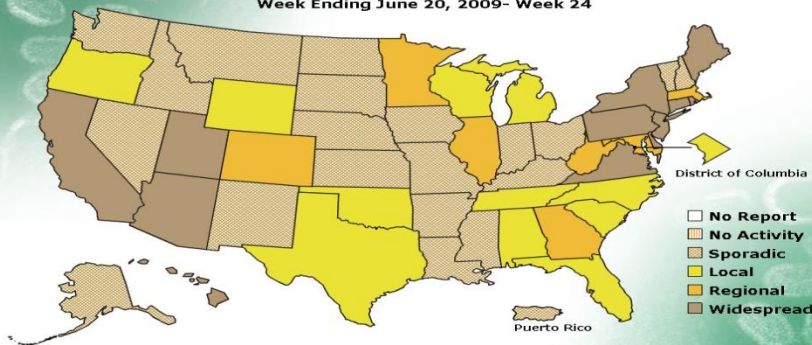
- Centers for Disease Control and Prevention Influenza Website: <http://www.cdc.gov/flu/weekly/fluactivity.htm>
- Immunization Action Coalition Website: <http://immunize.org/>

IDPH Website

<http://www.idph.state.il.us/flu/surveillance.htm>

FLUVIEW

A Weekly Influenza Surveillance Report Prepared by the Influenza Division
Weekly Influenza Activity Estimates Reported by State and Territorial Epidemiologists*
Week Ending June 20, 2009- Week 24



*This map indicates geographic spread and does not measure the severity of influenza activity.

No activity: No laboratory confirmed cases of influenza and no reported increase in cases of influenza like illness (ILI).

Sporadic: Small numbers of laboratory confirmed influenza cases or a single laboratory confirmed influenza in a single region of the state.

Local: Outbreaks of influenza or increases in ILI and recent laboratory confirmed influenza in a single region of the state.

Regional: Outbreaks of influenza or increases in ILI and recent laboratory confirmed influenza in at least two but less than half the regions of the state.

Widespread: Outbreaks of influenza or increases in ILI cases and recent laboratory confirmed influenza in at least half the regions in the state.

³"Influenza like Illness" is defined as fever $\geq 100^{\circ}\text{F}$ and cough and/or sore throat.

*Threshold=3.66%

**ILI data excluding the City of Chicago

¹Data in this report is provisional and will be updated weekly