

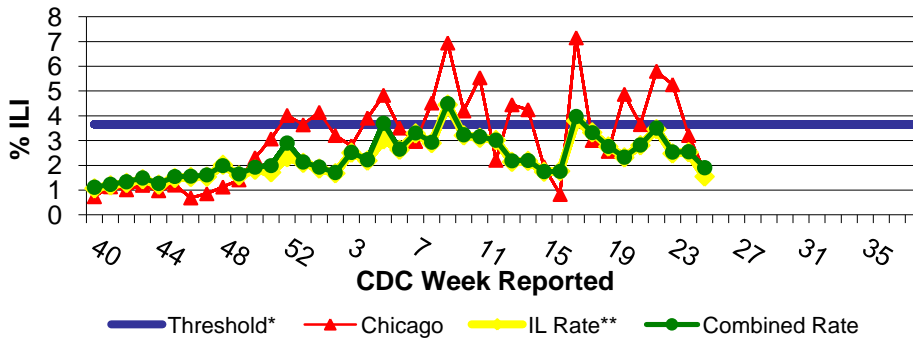
# IDPH Weekly Influenza Surveillance Report

Week ending June 27, 2009<sup>1</sup> Influenza Activity Level: **REGIONAL<sup>2</sup>**

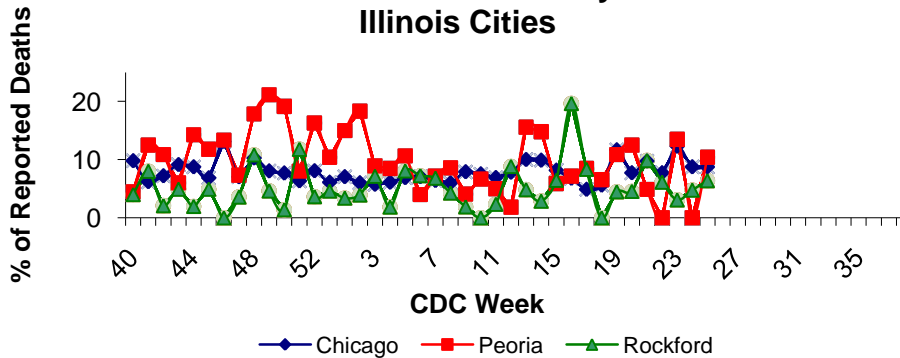


CDC Week	Sentinel Providers - %ILI	Lab Confirmed Specimens
25	1.91	176

## Illinois Sentinel Provider Surveillance Network



## Influenza & Pneumonia Mortality in Selected Illinois Cities



## Novel Influenza A (H1N1) Virus

As of 6/27/09, there have been 33,902 confirmed and probable human infections with swine origin influenza A (H1N1) virus in 52 states including the District of Columbia, Puerto Rico and the US Virgin Islands. There have been 170 deaths linked to H1N1 in 23 states. Click the link below for details: <http://www.cdc.gov/h1n1flu/update.htm>

## Illinois Sentinel Provider Data<sup>1</sup>

Weekly data reported from participating medical practitioners attributing patient office visits to "influenza like illness" (ILI)<sup>3</sup>

• Age 0-4	194
• Age 5-24	183
• Age 25-64	108
• 65 +	26

## Influenza & Pneumonia Mortality Surveillance

- Data from CDC 122 Cities Morbidity and Mortality Reporting System
- All age groups represented
- Eight influenza-associated pediatric deaths were reported nation-wide for CDC week 25. Seven of the 8 deaths were associated with influenza A (H1N1) virus infection.

## Great Lakes Naval Academy Febrile Respiratory Illness Surveillance Update

Febrile respiratory illness in military recruits at NRTC Great Lakes was reported as substantially elevated.

## Laboratory Surveillance<sup>1</sup>

- One hundred seventy-seven specimens have been reported to IDPH for CDC week 25 (specimens reported between 6/21/09-6/27/09).
- Influenza A (H1) 1
- Influenza A (H3) 3
- Influenza A (unknown) 2
- Influenza B 0
- Novel Influenza A (H1N1) 170

## National Influenza Surveillance

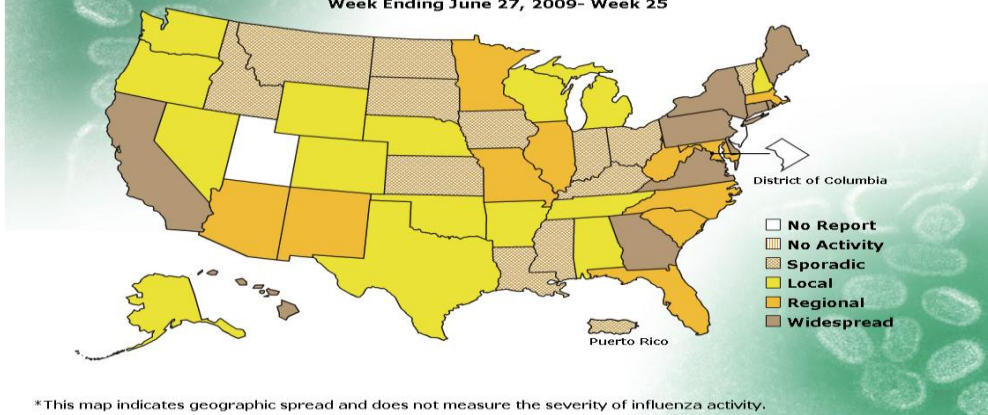
Ten states reported widespread activity, 11 states reported regional activity, 15 states reported local activity, Puerto Rico and 12 states reported sporadic activity, and the District of Columbia and 2 states did not report.

## Other References/Resources:

- Centers for Disease Control and Prevention Influenza Website: <http://www.cdc.gov/flu/weekly/fluactivity.htm>
- Immunization Action Coalition Website: <http://immunize.org/>
- IDPH Website: <http://www.idph.state.il.us/flu/surveillance.htm>

## FLUVIEW

A Weekly Influenza Surveillance Report Prepared by the Influenza Division  
Weekly Influenza Activity Estimates Reported by State and Territorial Epidemiologists\*  
Week Ending June 27, 2009- Week 25



\*This map indicates geographic spread and does not measure the severity of influenza activity.

**No activity:** No laboratory confirmed cases of influenza and no reported increase in cases of influenza like illness (ILI).

**Sporadic:** Small numbers of laboratory confirmed influenza cases or a single laboratory confirmed influenza in a single region of the state.

**Local:** Outbreaks of influenza or increases in ILI and recent laboratory confirmed influenza in a single region of the state.

**Regional:** Outbreaks of influenza or increases in ILI and recent laboratory confirmed influenza in at least two but less than half the regions of the state.

**Widespread:** Outbreaks of influenza or increases in ILI cases and recent laboratory confirmed influenza in at least half the regions in the state.

<sup>3</sup>"Influenza like Illness" is defined as fever  $\geq 100^{\circ}\text{F}$  and cough and/or sore throat.

\*Threshold=3.66%

\*\*ILI data excluding the City of Chicago

<sup>1</sup>Data in this report is provisional and will be updated weekly