

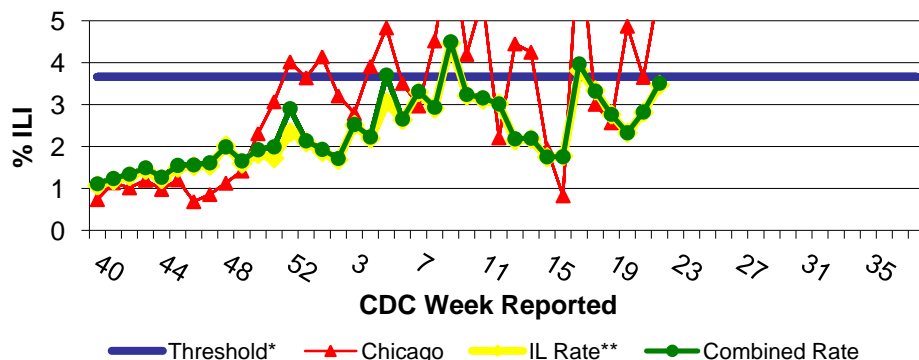
# IDPH Weekly Influenza Surveillance Report

Week ending June 6, 2009<sup>1</sup> Influenza Activity Level: **REGIONAL<sup>2</sup>**

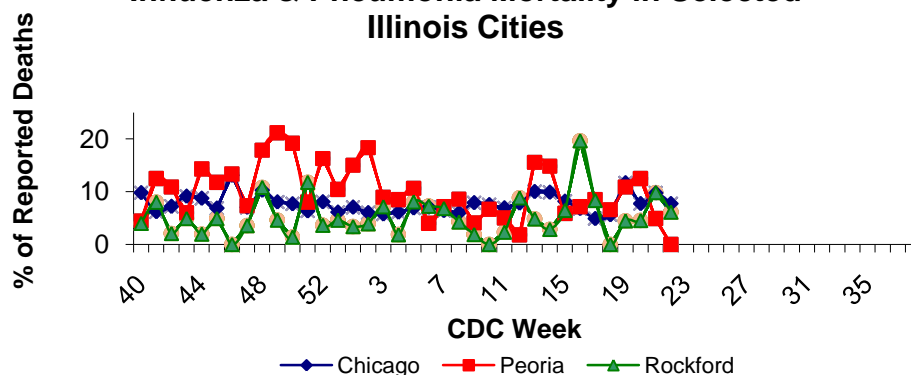


CDC Week	Sentinel Providers - %ILI	Lab Confirmed Specimens
22	3.51	454

## Illinois Sentinel Provider Surveillance Network



## Influenza & Pneumonia Mortality in Selected Illinois Cities



## Novel Influenza A (H1N1) Virus

There have been seventeen thousand eight hundred fifty-five human infections with swine origin influenza A (H1N1) virus confirmed in 52 states including the District of Columbia and Puerto Rico as of 5/30/09. There have been 44 deaths linked to H1N1 in 10 states - AZ (5), CA (6), CT (1), IL (5), MI (1), MO (1), NY (13), OR (1), PA (2), TX (3), UT (2), VA (1), WA (2), WI (1).

## Illinois Sentinel Provider Data<sup>1</sup>

Weekly data reported from participating medical practitioners attributing patient office visits to "influenza like illness" (ILI)<sup>3</sup>

• Age 0-4	217
• Age 5-24	347
• Age 25-64	149
• 65 +	21

## Influenza & Pneumonia Mortality Surveillance

- Data from CDC 122 Cities Morbidity and Mortality Reporting System
- All age groups represented
- Three influenza-associated pediatric deaths were reported nation-wide for CDC week 22.

## Laboratory Surveillance<sup>1</sup>

- Respiratory illness in military recruits at NRTC Great Lakes was reported as at or below expected value.
- Four hundred fifty-four specimens have been reported to IDPH for CDC week 22 (specimens tested between 5/31/09-6/6/09).

• Influenza A (H1)	0
• Influenza A (H3)	0
• Influenza A (unknown)	8
• Influenza B	0
• Novel Influenza A (H1N1)	446

## National Influenza Surveillance

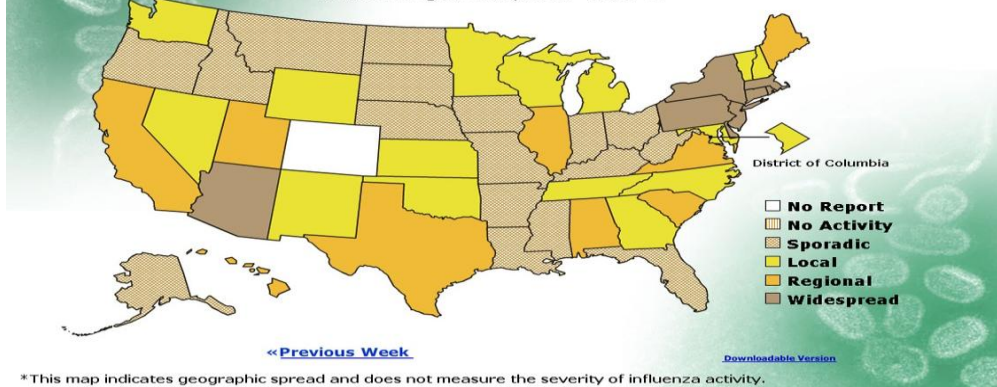
Eight states reported widespread activity, 9 states reported regional activity, the District of Columbia, Puerto Rico and 15 states reported local activity, 17 states reported sporadic activity, and one state did not report.

## Other References/Resources:

- Centers for Disease Control and Prevention Influenza Website: <http://www.cdc.gov/flu/weekly/fluactivity.htm>
- Immunization Action Coalition Website: <http://immunize.org/>
- IDPH Website: <http://www.idph.state.il.us/flu/surveillance.htm>

## FLUVIEW

A Weekly Influenza Surveillance Report Prepared by the Influenza Division  
Weekly Influenza Activity Estimates Reported by State and Territorial Epidemiologists\*  
Week Ending June 06, 2009- Week 22



**No activity:** No laboratory confirmed cases of influenza and no reported increase in cases of influenza like illness (ILI).

**Sporadic:** Small numbers of laboratory confirmed influenza cases or a single laboratory confirmed influenza in a single region of the state.

**Local:** Outbreaks of influenza or increases in ILI and recent laboratory confirmed influenza in a single region of the state.

**Regional:** Outbreaks of influenza or increases in ILI and recent laboratory confirmed influenza in at least two but less than half the regions of the state.

**Widespread:** Outbreaks of influenza or increases in ILI cases and recent laboratory confirmed influenza in at least half the regions in the state.

<sup>3</sup>"Influenza like Illness" is defined as fever  $\geq 100^{\circ}\text{F}$  and cough and/or sore throat.

\*Threshold=3.66%

\*\*ILI data excluding the City of Chicago

<sup>1</sup>Data in this report is provisional and will be updated weekly