

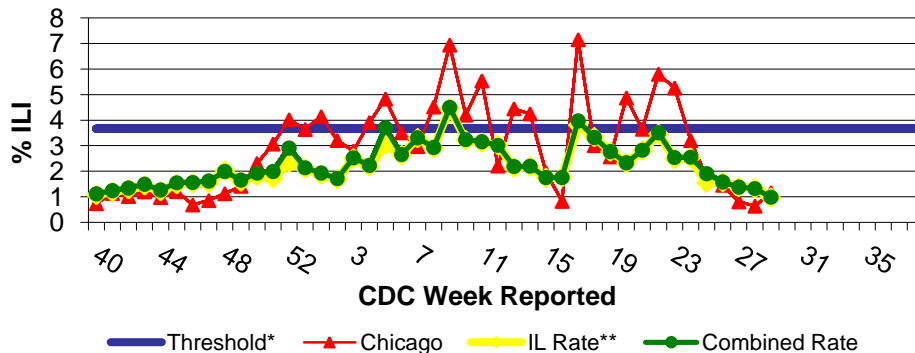
IDPH Weekly Influenza Surveillance Report

Week ending July 25, 2009¹ Influenza Activity Level: **SPORADIC²**

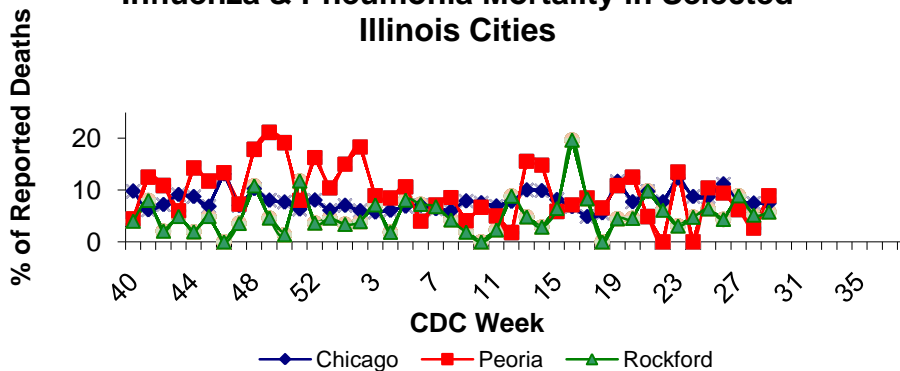


CDC Week	Sentinel Providers - %ILI	Lab Confirmed Specimens
29	0.98	10

Illinois Sentinel Provider Surveillance Network



Influenza & Pneumonia Mortality in Selected Illinois Cities



Novel Influenza A (H1N1) Virus

CDC discontinued reporting of individual confirmed and probable cases of novel H1N1 infection on July 24, 2009. CDC will report the total number of hospitalizations and deaths weekly. As of July 25, 2009, there have been 5,514 hospitalized cases and 353 deaths in 47 states and territories, including District of Columbia, American Samoa, Guam, Puerto Rico and the US Virgin Islands. These cases are associated with the novel H1N1 flu outbreak. Click the following link for details:

<http://www.cdc.gov/h1n1flu/update.htm>

Illinois Sentinel Provider Data¹

Weekly data reported from participating medical practitioners attributing patient office visits to "influenza like illness" (ILI)³

- Age 0-4 78
- Age 5-24 76
- Age 25-64 49
- 65 + 12

Influenza & Pneumonia Mortality Surveillance

- Data from CDC 122 Cities Morbidity and Mortality Reporting System
- All age groups represented
- Two influenza-associated pediatric deaths were reported nation-wide. Both were associated with novel influenza A (H1N1) viruses for CDC week 29.

Great Lakes Naval Academy Febrile Respiratory Illness Surveillance Update

Febrile respiratory illness in military recruits at NRTC Great Lakes was reported as at or below expected value.

Laboratory Surveillance⁴

- Ten specimens have been reported to IDPH for CDC week 29 (specimens reported between 7/19/09-7/25/09).
- Influenza A (H1) 0
- Influenza A (H3) 0
- Influenza A (unknown) 0
- Influenza B 0
- Novel Influenza A (H1N1) 10

National Influenza Surveillance

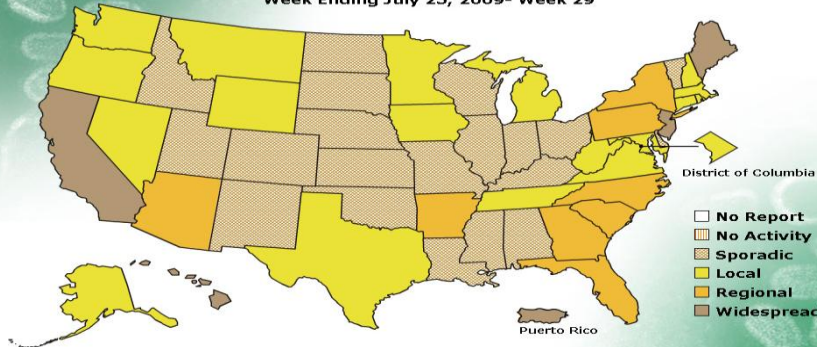
Four states and Puerto Rico reported widespread activity, 8 states reported regional activity, 19 states and the District of Columbia reported local activity and 19 states reported sporadic activity.

Other References/Resources:

- Centers for Disease Control and Prevention Influenza Website: <http://www.cdc.gov/flu/weekly/fluactivity.htm>
- Immunization Action Coalition Website: <http://immunize.org/>
- IDPH Website: <http://www.idph.state.il.us/flu/surveillance.htm>

FLUVIEW

A Weekly Influenza Surveillance Report Prepared by the Influenza Division
Weekly Influenza Activity Estimates Reported by State and Territorial Epidemiologists*
Week Ending July 25, 2009- Week 29



*This map indicates geographic spread and does not measure the severity of influenza activity.

No activity: No laboratory confirmed cases of influenza and no reported increase in cases of influenza like illness (ILI).

²Sporadic: Small numbers of laboratory confirmed influenza cases or a single laboratory confirmed influenza in a single region of the state.

Local: Outbreaks of influenza or increases in ILI and recent laboratory confirmed influenza in a single region of the state.

Regional: Outbreaks of influenza or increases in ILI and recent laboratory confirmed influenza in at least two but less than half the regions of the state.

Widespread: Outbreaks of influenza or increases in ILI cases and recent laboratory confirmed influenza in at least half the regions in the state.

³"Influenza like Illness" is defined as fever $\geq 100^{\circ}\text{F}$ and cough and/or sore throat.

*Threshold=3.66%

**ILI data excluding the City of Chicago

¹Data in this report is provisional and will be updated weekly