

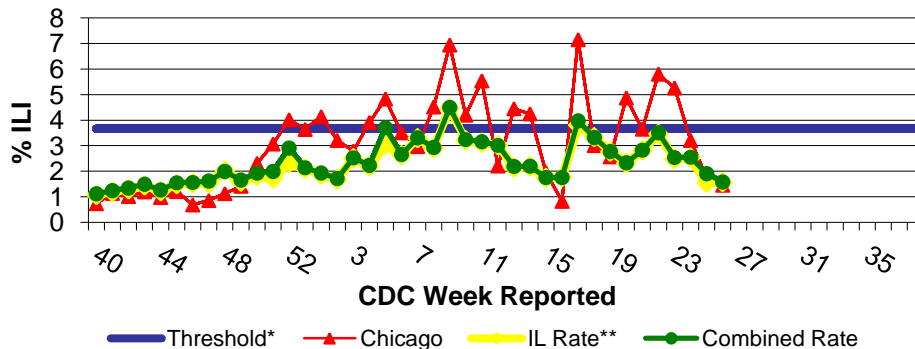
IDPH Weekly Influenza Surveillance Report

Week ending July 4, 2009¹ Influenza Activity Level: **REGIONAL²**

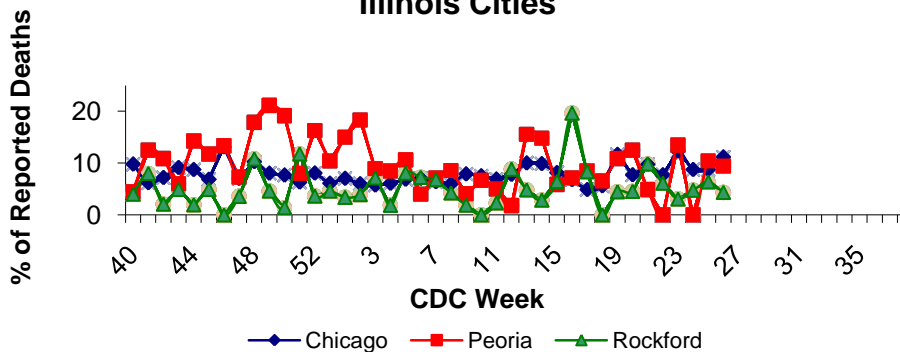


CDC Week	Sentinel Providers - %ILI	Lab Confirmed Specimens
26	1.60	94

Illinois Sentinel Provider Surveillance Network



Influenza & Pneumonia Mortality in Selected Illinois Cities



Novel Influenza A (H1N1) Virus

As of 7/02/09, there have been 37,246 confirmed and probable human infections with swine origin influenza A (H1N1) virus in 52 states including the District of Columbia, Puerto Rico and the US Virgin Islands. There have been 211 deaths linked to H1N1 in 24 states. Click the link below for details: <http://www.cdc.gov/h1n1flu/update.htm>

Illinois Sentinel Provider Data¹

Weekly data reported from participating medical practitioners attributing patient office visits to "influenza like illness" (ILI)³

- Age 0-4 126
- Age 5-24 122
- Age 25-64 93
- 65 + 18

Influenza & Pneumonia Mortality Surveillance

- Data from CDC 122 Cities Morbidity and Mortality Reporting System
- All age groups represented
- Five influenza-associated pediatric deaths were reported nation-wide for CDC week 26. All 5 deaths were associated with novel influenza A (H1N1) virus infection.

Great Lakes Naval Academy Febrile Respiratory Illness Surveillance Update

Febrile respiratory illness in military recruits at NRTC Great Lakes was reported as at or below expected value.

Laboratory Surveillance¹

- Ninety-four specimens have been reported to IDPH for CDC week 26 (specimens reported between 6/28/09-7/4/09).
- Influenza A (H1) 0
- Influenza A (H3) 1
- Influenza A (unknown) 2
- Influenza B 0
- Novel Influenza A (H1N1) 91

National Influenza Surveillance

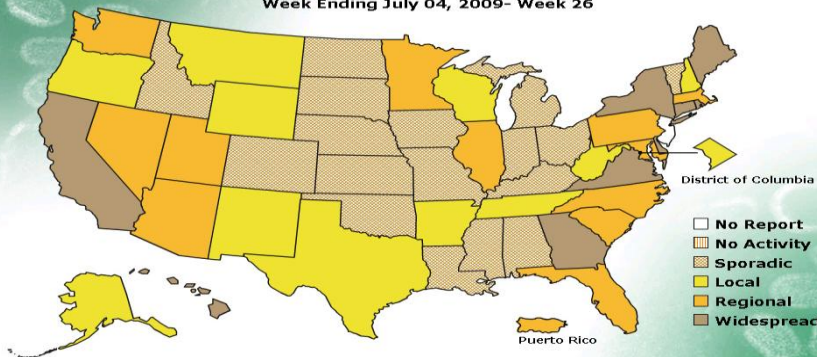
Nine states reported widespread activity, 12 states and Puerto Rico reported regional activity, 10 states and the District of Columbia reported local activity, 18 states reported sporadic activity, and one state did not report.

Other References/Resources:

- Centers for Disease Control and Prevention Influenza Website: <http://www.cdc.gov/flu/weekly/fluactivity.htm>
- Immunization Action Coalition Website: <http://immunize.org/>
- IDPH Website <http://www.idph.state.il.us/flu/surveillance.htm>

FLUVIEW

A Weekly Influenza Surveillance Report Prepared by the Influenza Division
Weekly Influenza Activity Estimates Reported by State and Territorial Epidemiologists*
Week Ending July 04, 2009- Week 26



*This map indicates geographic spread and does not measure the severity of influenza activity.

No activity: No laboratory confirmed cases of influenza and no reported increase in cases of influenza like illness (ILI).

Sporadic: Small numbers of laboratory confirmed influenza cases or a single laboratory confirmed influenza in a single region of the state.

Local: Outbreaks of influenza or increases in ILI and recent laboratory confirmed influenza in a single region of the state.

Regional: Outbreaks of influenza or increases in ILI and recent laboratory confirmed influenza in at least two but less than half the regions of the state.

Widespread: Outbreaks of influenza or increases in ILI cases and recent laboratory confirmed influenza in at least half the regions in the state.

³"Influenza like Illness" is defined as fever $\geq 100^{\circ}\text{F}$ and cough and/or sore throat.

*Threshold=3.66%

**ILI data excluding the City of Chicago

¹Data in this report is provisional and will be updated weekly