

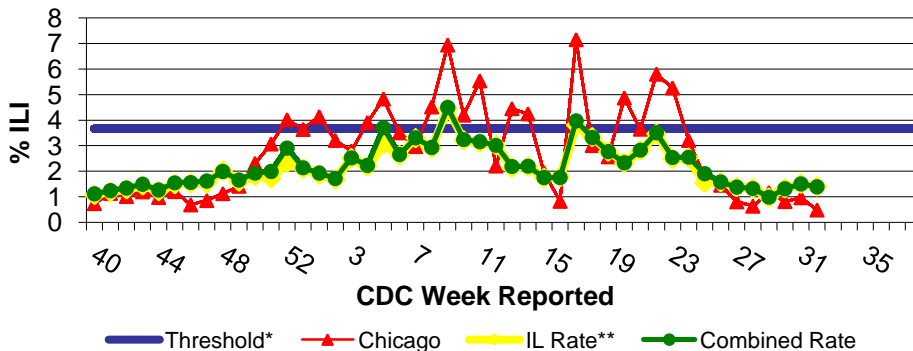
IDPH Weekly Influenza Surveillance Report

Week ending August 15, 2009¹ Influenza Activity Level: **SPORADIC²**

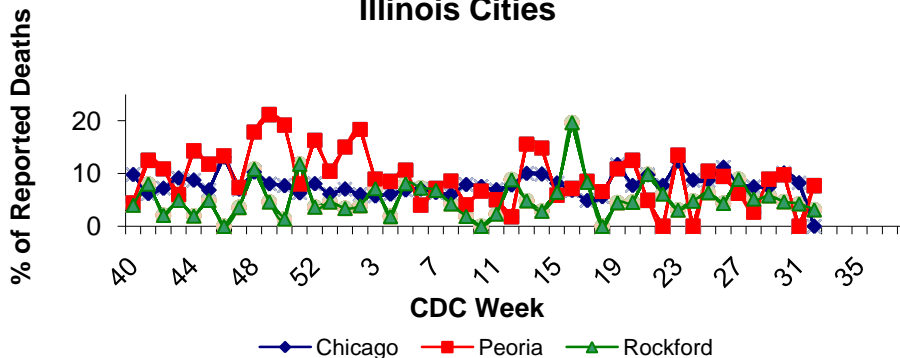


CDC Week	Sentinel Providers - %ILI	Lab Confirmed Specimens
32	1.39	19

Illinois Sentinel Provider Surveillance Network



Influenza & Pneumonia Mortality in Selected Illinois Cities



Novel Influenza A (H1N1) Virus

CDC discontinued reporting of individual confirmed and probable cases of novel H1N1 infection on July 24, 2009. CDC will report the total number of hospitalizations and deaths weekly. As of August 15, 2009, there have been 7,983 hospitalizations and 522 deaths associated with the novel H1N1 flu outbreak. These have been reported from 53 states and territories, including District of Columbia, American Samoa, Guam, Puerto Rico and the US Virgin Islands. Click the following link for details: <http://www.cdc.gov/h1n1flu/update.htm>

Illinois Sentinel Provider Data¹

Weekly data reported from participating medical practitioners attributing patient office visits to "influenza like illness" (ILI)³

- Age 0-4 138
- Age 5-24 110
- Age 25-64 98
- 65 + 25

Influenza & Pneumonia Mortality Surveillance

- Data from CDC 122 Cities Morbidity and Mortality Reporting System
- All age groups represented
- Four influenza-associated pediatric deaths were reported nation-wide and all were associated with novel influenza A (H1N1) virus for week ending 8/15/09.

Great Lakes Naval Academy Febrile Respiratory Illness Surveillance Update

Report not issued for week ending 08/15/09.

Laboratory Surveillance¹

- Nineteen specimens have been reported by IDPH laboratory for week ending 8/15/09.
- Influenza A (H1) 0
- Influenza A (H3) 1
- Influenza A (unknown) 2
- Influenza B 0
- Novel Influenza A (H1N1) 16

National Influenza Surveillance

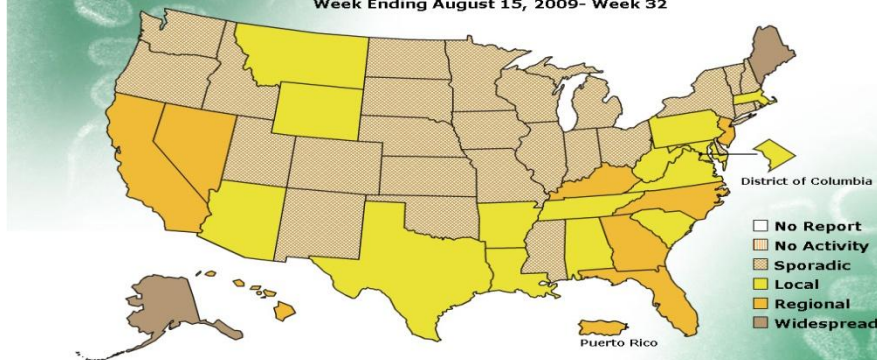
Two states reported widespread activity, 8 states and Puerto Rico reported regional activity, 14 states and the District of Columbia reported local activity and 26 states reported sporadic activity.

Other References/Resources:

- Centers for Disease Control and Prevention Influenza Website: <http://www.cdc.gov/flu/weekly/fluactivity.htm>
- Immunization Action Coalition Website: <http://immunize.org/>
- IDPH Website <http://www.idph.state.il.us/flu/surveillance.htm>

FLUVIEW

A Weekly Influenza Surveillance Report Prepared by the Influenza Division
Weekly Influenza Activity Estimates Reported by State and Territorial Epidemiologists*
Week Ending August 15, 2009- Week 32



*This map indicates geographic spread and does not measure the severity of influenza activity.

No activity: No laboratory confirmed cases of influenza and no reported increase in cases of influenza like illness (ILI).

²Sporadic: Small numbers of laboratory confirmed influenza cases or a single laboratory confirmed influenza in a single region of the state.

Local: Outbreaks of influenza or increases in ILI and recent laboratory confirmed influenza in a single region of the state.

Regional: Outbreaks of influenza or increases in ILI and recent laboratory confirmed influenza in at least two but less than half the regions of the state.

Widespread: Outbreaks of influenza or increases in ILI cases and recent laboratory confirmed influenza in at least half the regions in the state.

³"Influenza like Illness" is defined as fever $\geq 100^{\circ}\text{F}$ and cough and/or sore throat.

*Threshold=3.66%

**ILI data excluding the City of Chicago

¹Data in this report is provisional and will be updated weekly