

Week 40: September 29- October 5, 2013

ILLINOIS DEPARTMENT OF PUBLIC HEALTH



# Illinois Influenza Surveillance Report

Week 40: Week Ending Saturday, October 5, 2013

Division of Infectious Diseases Communicable Disease Section

10/11/2013

## Contents

Summary .....	3
CDC FluView.....	4
ILINet Provider Surveillance .....	5
ILI Visits by Age Group .....	6
Influenza Intensive Care Unit (ICU) Admissions and Deaths .....	7
Influenza Related ICU Admissions by Age Group, 2012-2014.....	8
Laboratory Surveillance .....	9
Viral Resistance.....	9
Influenza Outbreaks Reported in Long-Term Facilities (LTC) and Nursing Homes (NH) .....	9
IDPH Infectious Diseases Regional Map.....	10
Weekly Viral Subtype .....	11
Resources .....	12

## Summary

- For this reporting week, the proportion of outpatient visits for influenza-like illness (ILI)<sup>1</sup> was **1.3%**.
- Based on CDC criteria, Illinois influenza activity is classified as **no activity** (see CDC FluView Section) for this reporting week.
- Febrile Respiratory Illness (FRI) surveillance<sup>2</sup> at Naval Recruit Training Command, Great Lakes was **at or below expected value** for this reporting week.
- For this reporting week there were **no** influenza specimens tested by Illinois Department of Public Health Laboratory.
- **One** influenza-associated Intensive Care Unit (ICU) admission<sup>3</sup> was reported for this reporting week.
- **No** influenza-associated pediatric deaths were reported for this reporting week.
- For this reporting week, **no** influenza outbreaks were reported in a long-term care facility.

## Avian Influenza A (H7N9)

- The most recent confirmed case reported by the World Health Organization became ill on July 27, 2013 and laboratory tests confirmed infection with the Avian Influenza A Virus (H7N9) on August 10, 2013. As of August 12, 2013, the total laboratory confirmed case count is 135 with 44 deaths.
- No cases of H7N9 have been detected in the United States or anywhere outside of China at this time
- For more information visit the World Health Organization Avian Influenza A(H7N9) website: [http://www.who.int/influenza/human\\_animal\\_interface/influenza\\_h7n9/en/index.html](http://www.who.int/influenza/human_animal_interface/influenza_h7n9/en/index.html)

---

<sup>1</sup> ILI "Influenza like Illness" is defined as fever  $\geq 100^{\circ}\text{F}$  and cough and/or sore throat.

<sup>2</sup> FRI surveillance is ongoing at 8 U.S. military basic training centers, representing all service branches. FRI Rate Status is classified into one of 3 categories:

1. At or below expected value
2. Moderately elevated
3. Substantially elevated

<sup>3</sup> For the purpose of diagnosis, influenza can be diagnosed by using the following test: reverse transcription polymerase chain reaction [RT-PCR], viral culture, Immunofluorescence [Direct Fluorescent Antibody (DFA) or Indirect Fluorescent Antibody (IFA) Staining], Enzyme Immuno Assay (EIA) or any rapid diagnostic test. Sensitivities of rapid diagnostic tests are approximately 50-70% when compared with viral culture or reverse transcription polymerase chain reaction (RT-PCR), and specificities of rapid diagnostic tests for influenza are approximately 90-95%. False-positive (and true-negative) results are more likely to occur when disease prevalence in the community is low, which is generally at the beginning and end of the influenza seasons. False-negative (and true-positive) results are more likely to occur when disease prevalence is high in the community, which is typically at the height of the influenza season.

## **CDC FluView**

**Due to the lapse in government funding, the CDC FluView national surveillance report will not be updated and published during the shutdown.**

**No activity:** No laboratory confirmed cases of influenza and no reported increase in cases of influenza like illness (ILI).

**Sporadic:** Small numbers of laboratory confirmed influenza cases or a single laboratory confirmed influenza in a single region of the state.

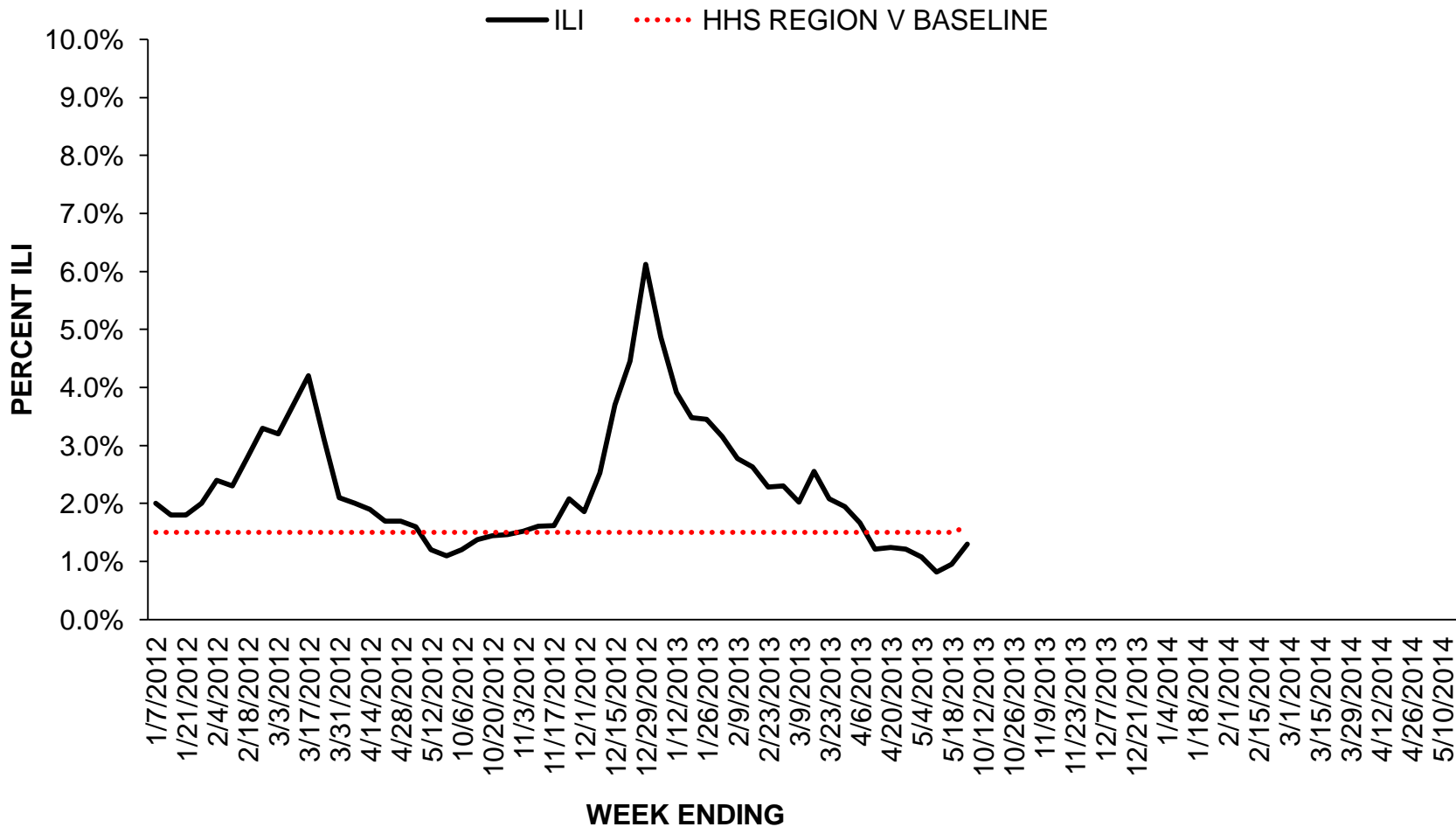
**Local:** Outbreaks of influenza or increases in ILI and recent laboratory confirmed influenza in a single region of the state.

**Regional:** Outbreaks of influenza or increases in ILI and recent laboratory confirmed influenza in at least two but less than half the regions of the state.

**Widespread:** Outbreaks of influenza or increases in ILI cases and recent laboratory confirmed influenza in at least half the regions in the state.

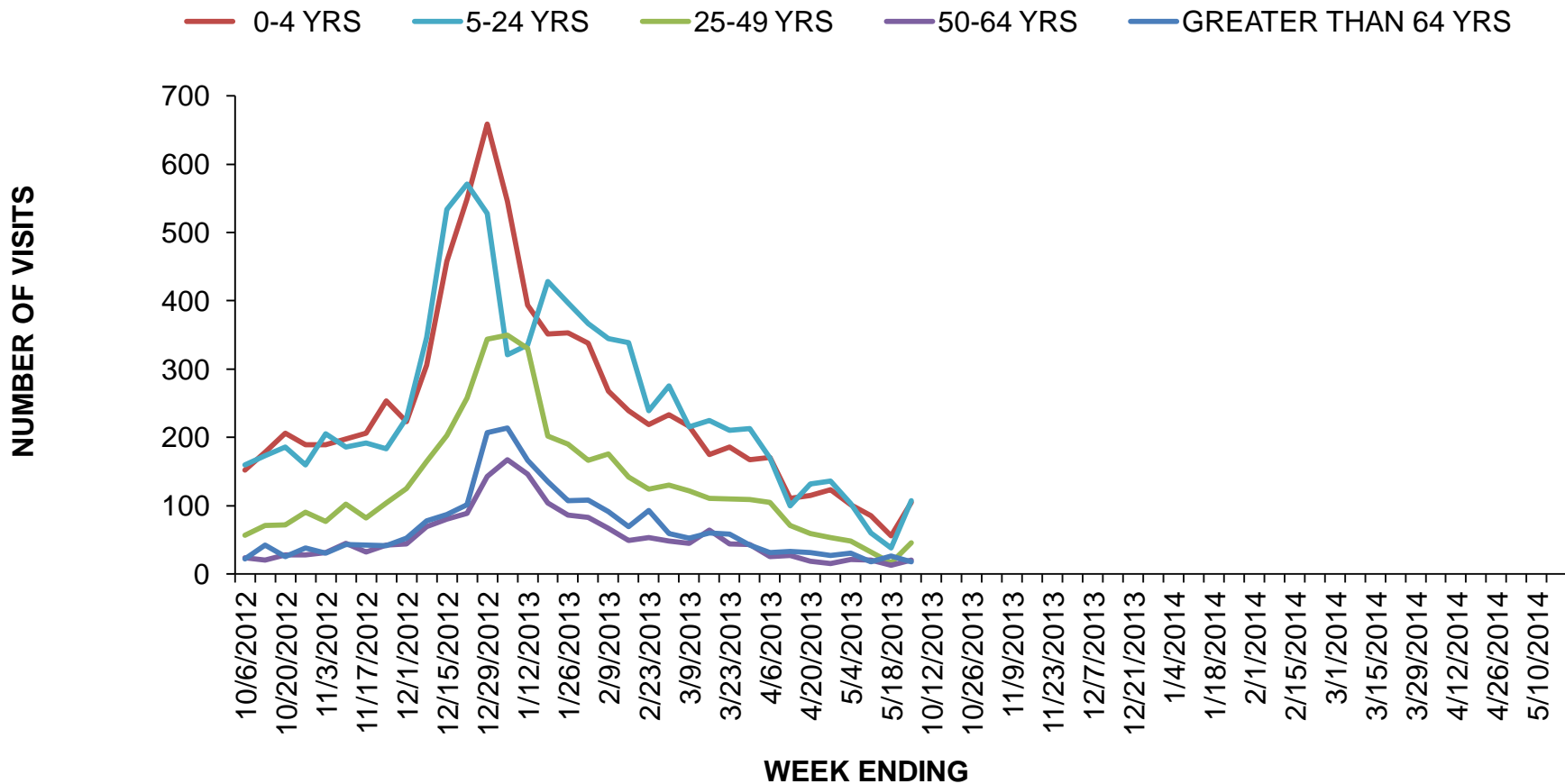
**ILINet Provider Surveillance**

Influenza Like Illness Outpatient Surveillance 2012-2014



**ILI Visits by Age Group**

2012-2014 INFLUENZA SEASON PROPORTION OF ILI OFFICE VISITS BY AGE GROUP



## **Great Lakes Naval Recruit Influenza Surveillance**

Febrile Respiratory Illness (FRI) surveillance<sup>1</sup> at Naval Recruit Training Command, Great Lakes was **at or below expected value** for week 39 (through 28 September 2013); week 40 information was not available at the time of this report. For more information visit

<http://www.med.navy.mil/sites/nhrc/geis/Pages/default.aspx>

## **Influenza Intensive Care Unit (ICU) Admissions and Deaths**

There was one influenza related ICU admission and no deaths for this reporting week.

Year	Week No	Admissions	Deaths <sup>4</sup>
2013	40	1	0

This is the first week of the 2013-2014 influenza season. In coming weeks data will reflect any increase or decrease in ICU admissions and deaths from previous weeks.

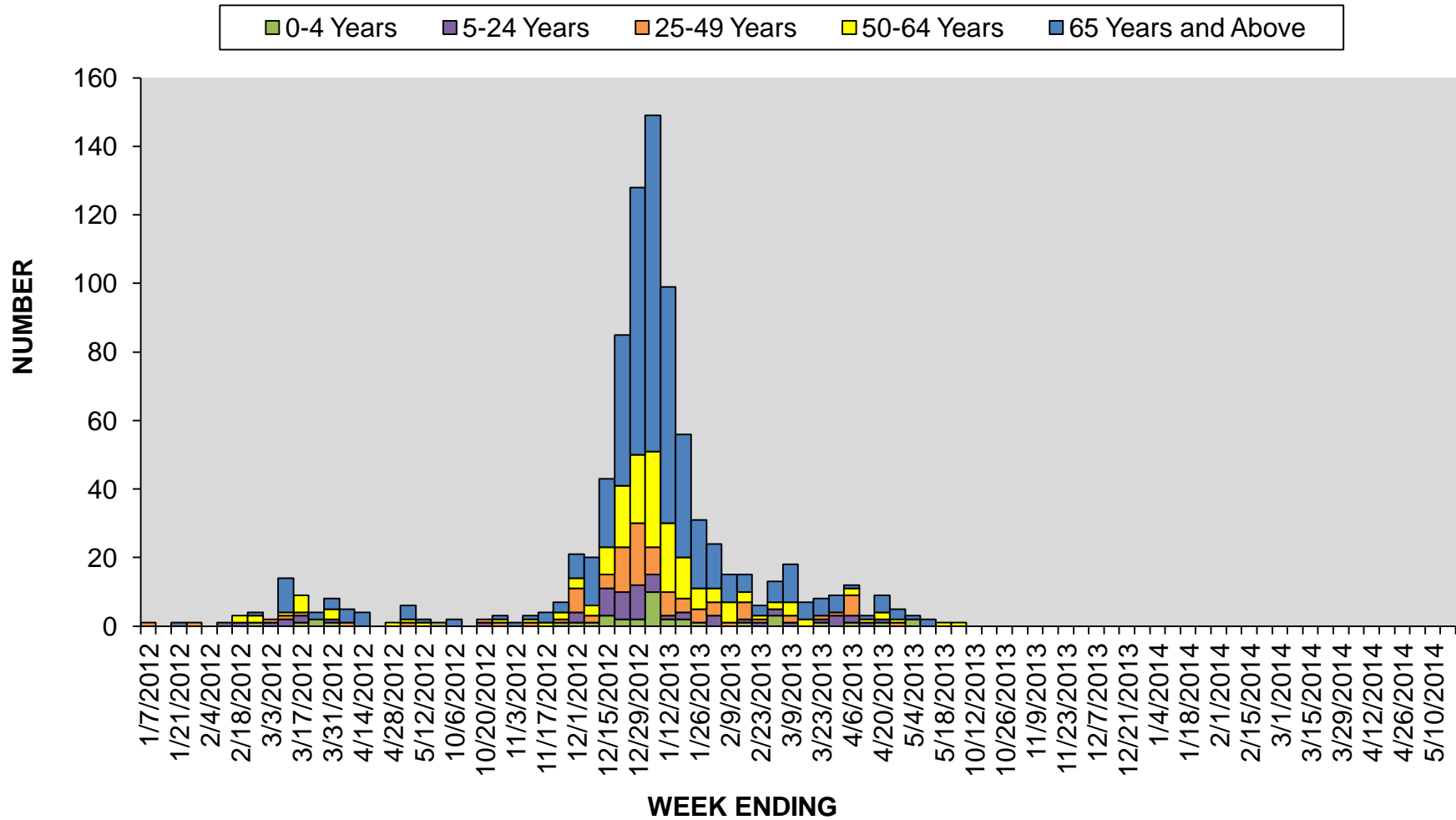
---

<sup>1</sup> FRI surveillance is ongoing at 8 U.S. military basic training centers, representing all service branches. FRI Rate Status is classified into one of 3 categories:

1. At or below expected value
2. Moderately elevated
3. Substantially elevated

<sup>4</sup> Deaths are reported for a) adults admitted to an intensive care unit who have a positive culture or PCR test for influenza and b) hospitalized and non-hospitalized children (less than 18 years of age) with a positive influenza test. The degree to which influenza infection is an immediate or underlying cause of death is not ascertained. CDC Influenza-Associated Pediatric Mortality data: <http://gis.cdc.gov/GRASP/Fluview/PedFluDeath.html>

**Influenza Related ICU Admissions by Age Group, 2012-2014**





**Laboratory Surveillance**

For this reporting week, no specimens were tested for influenza by the Illinois Department of Public Health Laboratory. For more information about circulating viruses visit:

- St Louis Children’s Hospital Weekly Virus/Microbiology Update:  
<http://slchlabtestguide.bjc.org/Default.aspx?url=63e0653d-fe31-466f-9228-d4de90fa7424>

Year	Week	A (H1)	2009(A)H1N1	A (H3)	A(Unable to subtype)	A(Sub typing not performed)	B	Total # Tested	% Positive
2013	40	0	0	0	0	0	0	0	0%

**Viral Resistance**

Information regarding antiviral resistance can be found on the CDC FluView Weekly Influenza Surveillance Report. Additional information on recommendations for treatment and chemoprophylaxis of influenza virus infection with antiviral agents is available at <http://www.cdc.gov/flu/antivirals/index.htm> .

**Influenza Outbreaks Reported in Long-Term Facilities (LTC) and Nursing Homes (NH)**

There were no outbreaks reported in long-term care facilities for this reporting week.

Region	2013-2014 Influenza Season -Number of outbreaks (%)
Rockford (1)	0(0)
Peoria (2),	0(0)
Edwardsville (4),	0(0)
Marion (5),	0(0)
Champaign (6),	0(0)
West Chicago (7)	0(0)
Chicago/Cook (8)	0(0)
Total	0(0)

### IDPH Infectious Diseases Regional Map



- 1 – Rockford Region
- 2 - Peoria Region
- 4 – Edwardsville Region
- 5 – Marion Region
- 6 - Champaign Region
- 7 – West Chicago Region
- 8 – Chicago/Cook Co Region

Week 40: September 29- October 5, 2013

## **Weekly Viral Subtype**

Influenza Isolates from Illinois Reported by WHO/NREVSS Collaborating Laboratories, 2013-2014

**Due to the lapse in government funding, the CDC ILINet Laboratory Surveillance Data will not be available during the shutdown.**

## **Resources**

- Centers for Disease Control and Prevention Influenza Website: <http://www.cdc.gov/flu/>
- Immunization Action Coalition Website: <http://immunize.org/>
- IDPH Seasonal Influenza Website: <http://www.idph.state.il.us/flu/surveillance.htm>
- St Louis Children's Hospital Weekly Virus/Microbiology Update:  
<http://slchlabtestguide.bjc.org/Default.aspx?url=63e0653d-fe31-466f-9228-d4de90fa7424>
- CDC Avian Influenza A (H7N9): <http://www.cdc.gov/flu/avianflu/h7n9-virus.htm>.